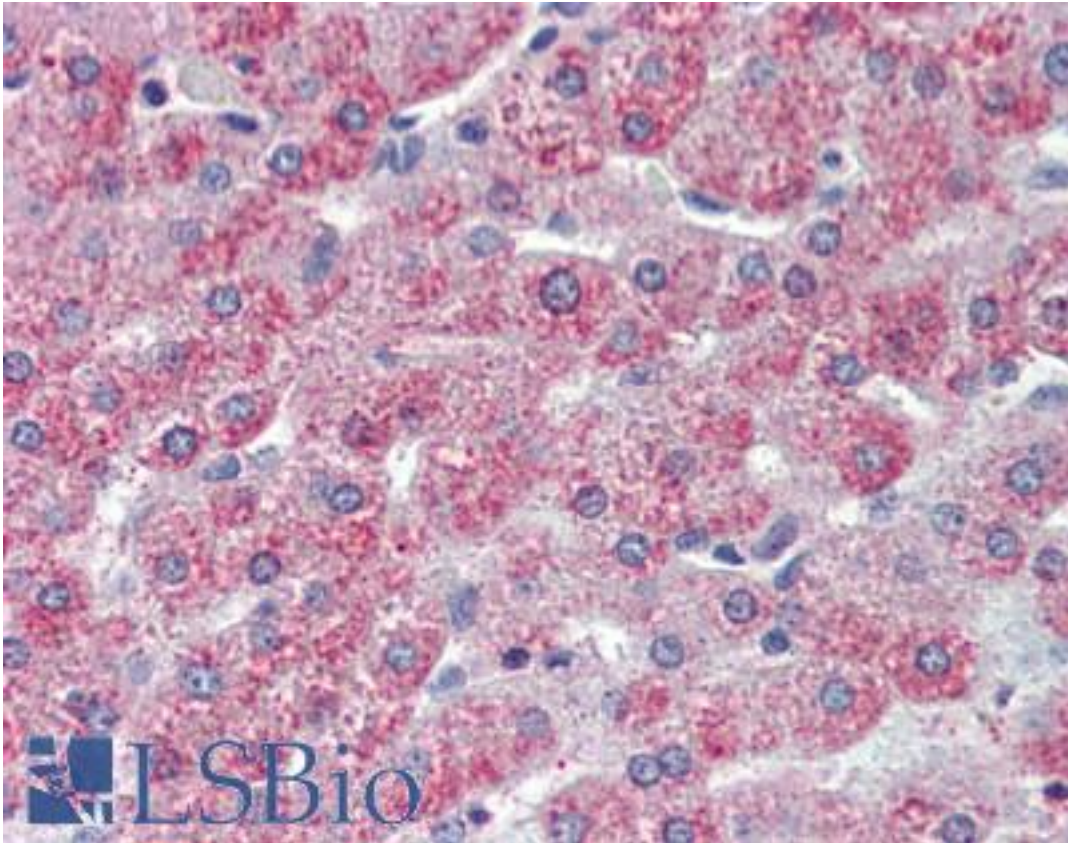


TAOK1 / TAO1 Rabbit anti-Human Polyclonal (Internal) Antibody - LS-A7971 - LSBio

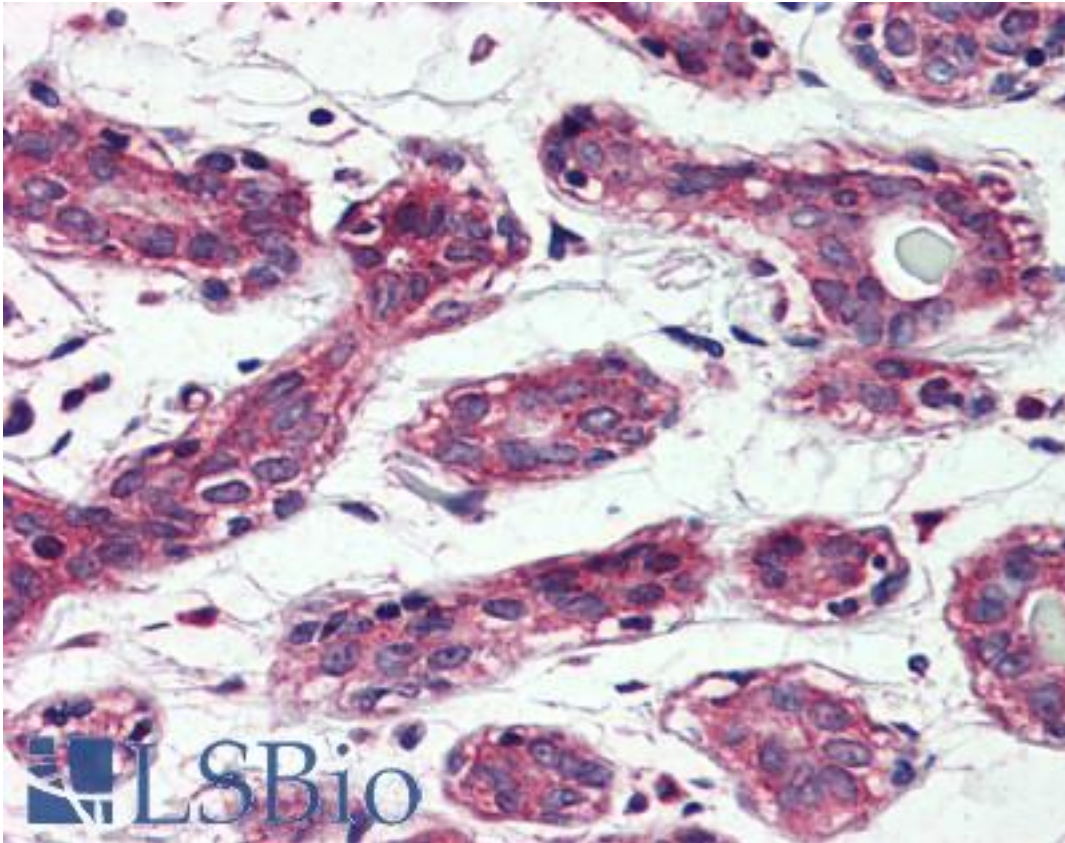
CatalogID:	LS-A7971
Target:	TAO kinase 1 (TAOK1)
Synonyms:	TAOK1 Antibody, MAP3K16 Antibody, MARK Kinase Antibody, HKFC-B Antibody, KFC-B Antibody, TAO kinase 1 Antibody, TAO1 Antibody, MARKK Antibody, PSK2 Antibody, HTAOK1 Antibody, KIAA1361 Antibody, Kinase from chicken homolog B Antibody, PSK-2 Antibody, Rat TAO1 Antibody, STE20-like kinase PSK2 Antibody, Sulu3 Antibody
Family / Subfamily:	Protein Kinase / TAO
Host	TAOK1 antibody was produced in Rabbit
Clonality:	Polyclonal
Immunogen Species:	TAOK1 / TAO1 antibody was raised against Human
Antigen Type:	Synthetic peptide
Immunogen:	TAOK1 / TAO1 antibody was raised against synthetic 15 amino acid peptide from internal region of human TAOK1. Percent identity with other species by BLAST analysis: Human, Gorilla, Gibbon, Monkey, Marmoset (100%); Mouse, Rat, Hamster, Elephant, Panda, Bovine, Dog, Bat, Horse, Rabbit, Pig, Opossum, Turkey, Chicken, Platypus, Xenopus (93%).
Specificity:	Human TAOK1. BLAST analysis of the peptide immunogen showed no homology with other human proteins.
Epitope:	Internal
Reactivity:	Human, Gorilla, Gibbon, Monkey
Predicted Reactivity:	Mouse, Rat, Bat, Bovine, Dog, Hamster, Horse, Pig, Rabbit, Chicken, Xenopus
Purification:	Immunoaffinity purified
Presentation:	PBS, 0.1% sodium azide.
Recommended Storage:	Long term: -70°C; Short term: +4°C
Usage Summary:	Immunohistochemistry with formalin-fixed paraffin-embedded tissues requires pretreatment with Proteinase K.
Uses:	IHC - Paraffin (5 µg/ml) (Optimal dilution to be determined by the researcher)
Size:	50 µg
Concentration:	1 mg/ml

Immunohistochemistry Image:



Anti-TAOK1 antibody LS-A7971 IHC of human liver. Immunohistochemistry of formalin-fixed, paraffin-embedded tissue after heat-induced antigen retrieval.

Immunohistochemistry Image:



Anti-TAOK1 antibody LS-A7971 IHC of human breast. Immunohistochemistry of formalin-fixed, paraffin-embedded tissue after heat-induced antigen retrieval.

Requested From:

Japan

Laboratory Reagent For In Vitro Research Use Only

Not for resale without prior written consent from LifeSpan BioSciences, Inc.

Created on 9/23/2014

© 2014 LifeSpan BioSciences