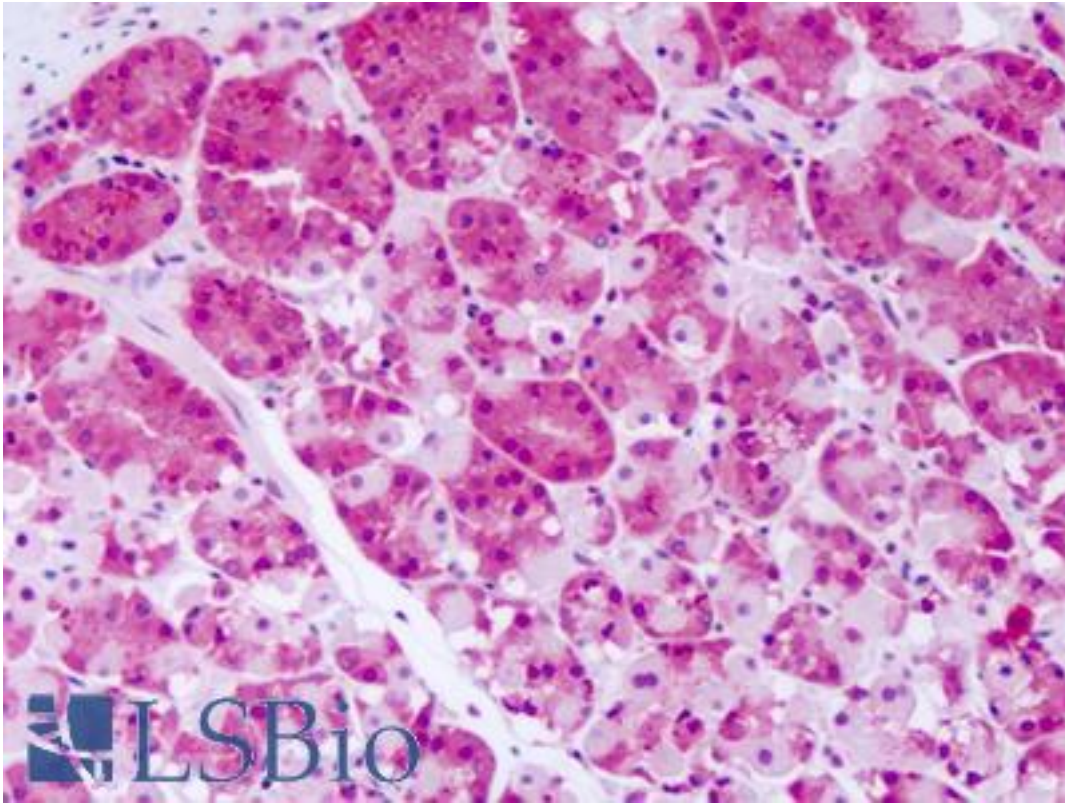


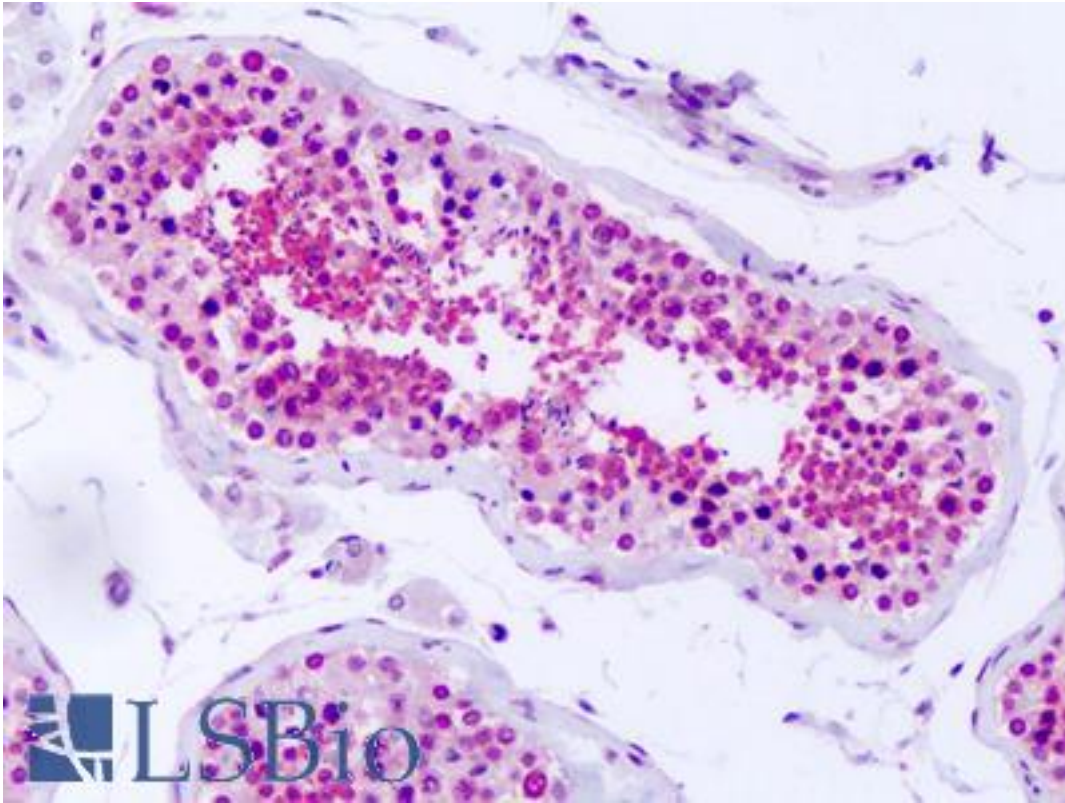
PRKD2 / PKD2 Rabbit anti-Human Polyclonal (Internal) Antibody - LS-A7515 - LSBio	
CatalogID:	LS-A7515
Target:	protein kinase D2 (PRKD2)
Synonyms:	PRKD2 Antibody, HSPC187 Antibody, NPKC-D2 Antibody, Protein kinase D2 Antibody, DKFZP586E0820 Antibody
Family / Subfamily:	Protein Kinase / PKD
Host	PRKD2 antibody was produced in Rabbit
Clonality:	Polyclonal
Immunogen Species:	PRKD2 / PKD2 antibody was raised against Human
Antigen Type:	Synthetic peptide
Immunogen:	PRKD2 / PKD2 antibody was raised against synthetic 18 amino acid peptide from internal region of human PRKD2. Percent identity with other species by BLAST analysis: Human, Gorilla, Gibbon, Monkey (100%); Marmoset, Dog (89%); Elephant, Panda (83%).
Specificity:	Human PRKD2. BLAST analysis of the peptide immunogen showed no homology with other human proteins, except DNM2 (50%).
Epitope:	Internal
Reactivity:	Human, Gorilla, Gibbon, Monkey
Purification:	Immunoaffinity purified
Presentation:	PBS, 0.1% sodium azide.
Recommended Storage:	Long term: -70°C; Short term: +4°C
Uses:	IHC - Paraffin (0.5 µg/ml) (Optimal dilution to be determined by the researcher)
Size:	50 µg
Concentration:	1 mg/ml

Immunohistochemistry Image:



Anti-PRKD2 antibody IHC of human stomach. Immunohistochemistry of formalin-fixed, paraffin-embedded tissue after heat-induced antigen retrieval. Antibody LS-A7515 dilution 0.5 ug/ml.

Immunohistochemistry Image:



Anti-PRKD2 antibody IHC of human testis. Immunohistochemistry of formalin-fixed, paraffin-embedded tissue after heat-induced antigen retrieval. Antibody LS-A7515 dilution 0.5 ug/ml.

Requested From:

Japan

Laboratory Reagent For In Vitro Research Use Only

Not for resale without prior written consent from LifeSpan BioSciences, Inc.

Created on 9/23/2014

© 2014 LifeSpan BioSciences