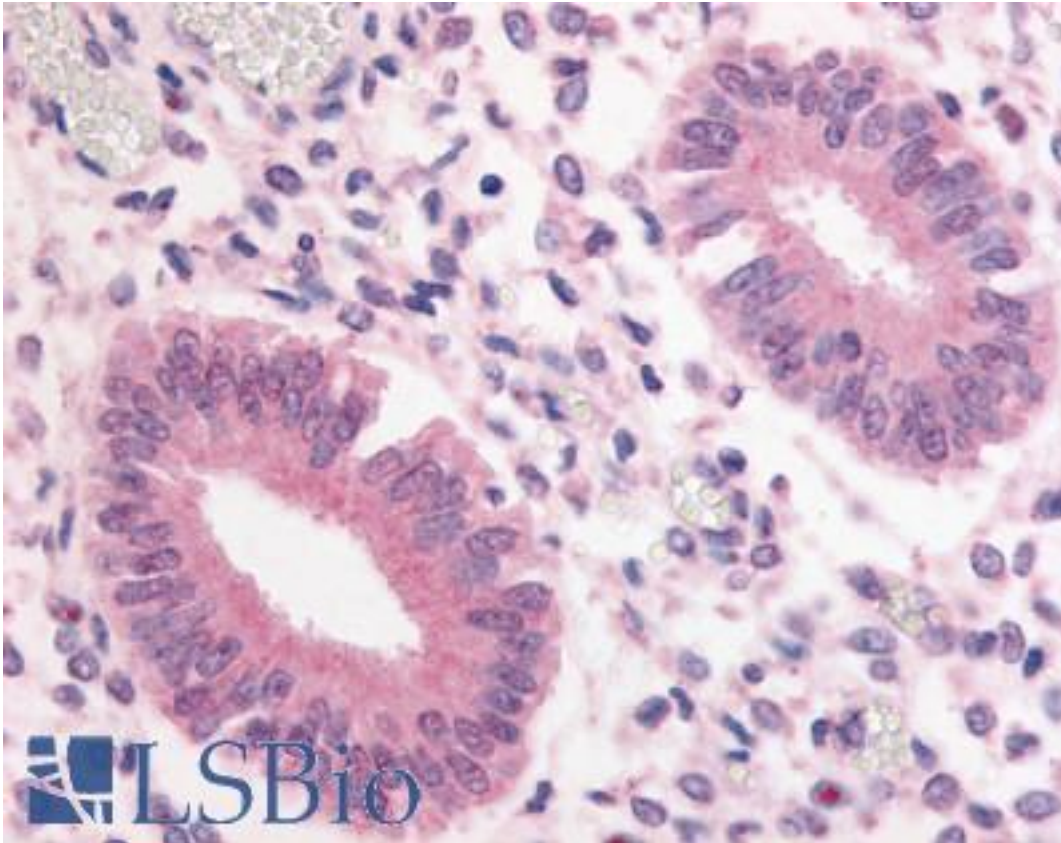


PDE3A Rabbit anti-Human Polyclonal (Internal) Antibody - LS-A749 - LSBio	
CatalogID:	LS-A749
Target:	phosphodiesterase 3A, cGMP-inhibited (PDE3A)
Synonyms:	PDE3A Antibody, CGI-PDE-A Antibody, HcGIP2 Antibody, Phosphodiesterase 3a Antibody, Phosphodiesterase isoform 3a Antibody, CGI-PDE Antibody, CGI-PDE A Antibody, CGIP2 Antibody, HPDE-3A Antibody, Phosphodiesterase type 3A Antibody
Family / Subfamily:	Phosphodiesterase / PDE - cAMP/cGMP dual-specific, cGMP-inhibited
Host	PDE3A antibody was produced in Rabbit
Clonality:	Polyclonal
Immunogen Species:	PDE3A antibody was raised against Human
Antigen Type:	Synthetic peptide
Immunogen:	PDE3A antibody was raised against synthetic 17 amino acid peptide from internal region of human PDE3A. Percent identity with other species by BLAST analysis: Human, Gibbon, Monkey, Mouse, Rat, Horse, Opossum (100%); Chicken (88%).
Specificity:	Human PDE3A. BLAST analysis of the peptide immunogen showed no homology with other human proteins.
Epitope:	Internal
Reactivity:	Human, Gibbon, Monkey, Mouse, Rat, Horse
Purification:	Immunoaffinity purified
Presentation:	PBS, 0.1% sodium azide.
Recommended Storage:	Long term: -70°C; Short term: +4°C
Usage Summary:	Immunohistochemistry: LS-A749 was validated for use in immunohistochemistry on a panel of 21 formalin-fixed, paraffin-embedded (FFPE) human tissues after heat induced antigen retrieval in pH 6.0 citrate buffer. After incubation with the primary antibody, slides were incubated with biotinylated secondary antibody, followed by alkaline phosphatase-streptavidin and chromogen. The stained slides were evaluated by a pathologist to confirm staining specificity. The optimal working concentration for LS-A749 was determined to be 20 ug/ml.
Uses:	IHC - Paraffin (20 µg/ml) (Optimal dilution to be determined by the researcher)
Size:	50 µg
Concentration:	1 mg/ml

Immunohistochemistry Image:



Anti-PDE3A antibody LS-A749 IHC of human uterus. Immunohistochemistry of formalin-fixed, paraffin-embedded tissue after heat-induced antigen retrieval.

Requested From:

Japan

Laboratory Reagent For In Vitro Research Use Only

Not for resale without prior written consent from LifeSpan BioSciences, Inc.

Created on 9/23/2014

© 2014 LifeSpan BioSciences