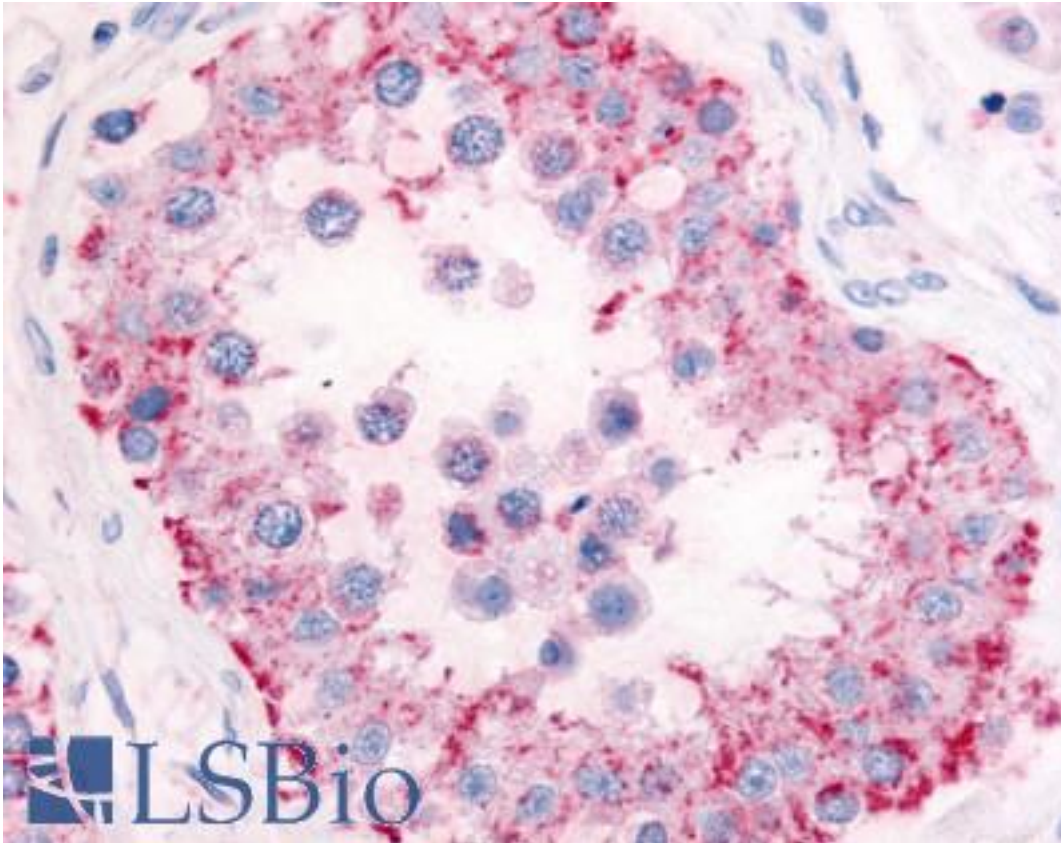


PDE11A Rabbit anti-Human Polyclonal (Internal) Antibody - LS-A746 - LSBio	
CatalogID:	LS-A746
Target:	phosphodiesterase 11A (PDE11A)
Synonyms:	PDE11A Antibody, Pde11 Antibody, PDE11A4 Antibody, PDE11A1 Antibody, PPNAD2 Antibody, PDE11A2 Antibody, PDE11A3 Antibody, Phosphodiesterase 11A Antibody
Family / Subfamily:	Phosphodiesterase / PDE - cAMP/cGMP dual-specific
Host	PDE11A antibody was produced in Rabbit
Clonality:	Polyclonal
Immunogen Species:	PDE11A antibody was raised against Human
Antigen Type:	Synthetic peptide
Immunogen:	PDE11A antibody was raised against synthetic 17 amino acid peptide from internal region of human PDE11A. Percent identity with other species by BLAST analysis: Human, Gorilla, Gibbon, Monkey, Marmoset, Mouse, Rat, Bovine, Bat, Hamster, Elephant, Horse, Rabbit, Pig, Opossum, Turkey, Chicken, Pufferfish, Zebrafish (100%); Platypus, Xenopus, Stickleback (94%); Dog (88%).
Specificity:	Human PDE11A. BLAST analysis of the peptide immunogen showed no homology with other human proteins, except PDE6B (53%).
Epitope:	Internal
Reactivity:	Human, Gorilla, Gibbon, Monkey, Mouse, Rat, Bat, Bovine, Hamster, Horse, Pig, Rabbit, Chicken, Zebrafish
Predicted Reactivity:	Xenopus
Purification:	Immunoaffinity purified
Presentation:	PBS, 0.1% sodium azide.
Recommended Storage:	Long term: -70°C; Short term: +4°C
Usage Summary:	Immunohistochemistry: LS-A746 was validated for use in immunohistochemistry on a panel of 21 formalin-fixed, paraffin-embedded (FFPE) human tissues after heat induced antigen retrieval in pH 6.0 citrate buffer. After incubation with the primary antibody, slides were incubated with biotinylated secondary antibody, followed by alkaline phosphatase-streptavidin and chromogen. The stained slides were evaluated by a pathologist to confirm staining specificity. The optimal working concentration for LS-A746 was determined to be 5 ug/ml.
Uses:	IHC - Paraffin (5 µg/ml) (Optimal dilution to be determined by the researcher)
Size:	50 µg
Concentration:	0.23 mg/ml

Immunohistochemistry Image:



Anti-PDE11A antibody LS-A746 IHC of human testis. Immunohistochemistry of formalin-fixed, paraffin-embedded tissue after heat-induced antigen retrieval.

Requested From:

Japan

Laboratory Reagent For In Vitro Research Use Only

Not for resale without prior written consent from LifeSpan BioSciences, Inc.

Created on 9/23/2014

© 2014 LifeSpan BioSciences