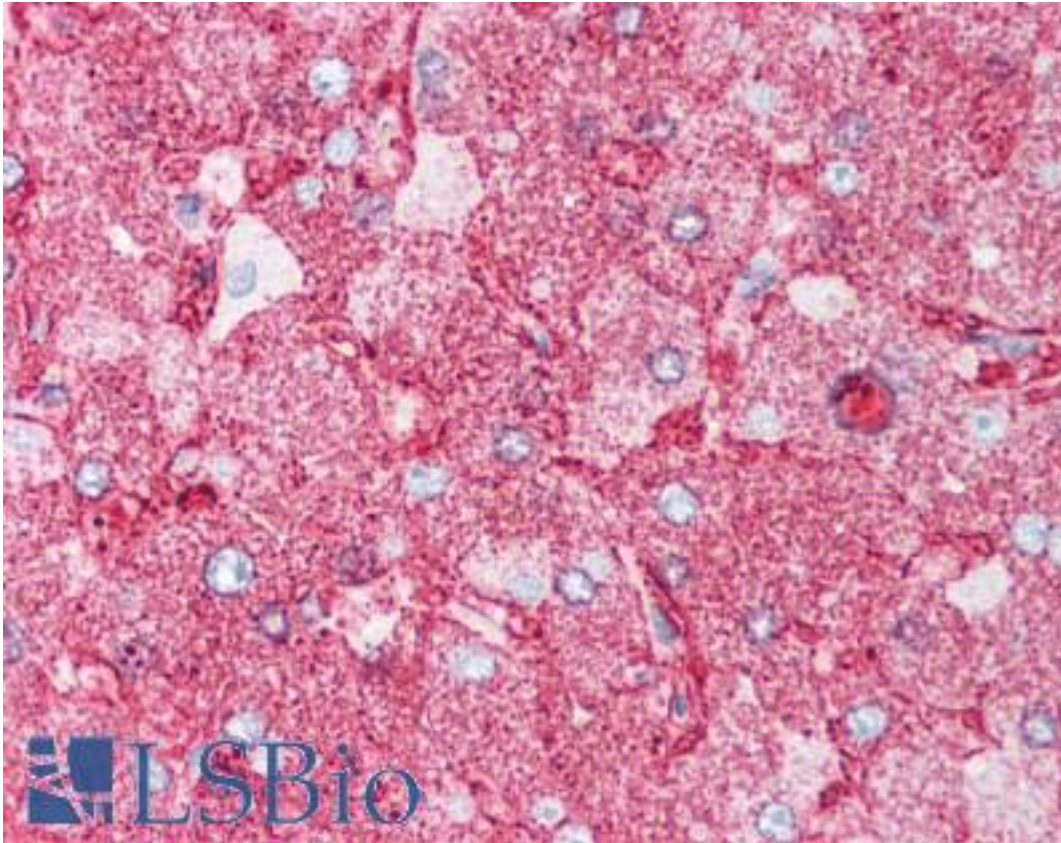


MINK1 / MINK Rabbit anti-Human Polyclonal (Internal) Antibody - LS-A7408 - LSBio

CatalogID:	LS-A7408
Target:	misshapen-like kinase 1 (MINK1)
Synonyms:	MINK1 Antibody, HMINKbeta Antibody, GCK family kinase MiNK Antibody, MAP4K6 Antibody, Misshapen/NIK-related kinase Antibody, MinK Antibody, Mink 1 Antibody, Misshapen/NIKs-related kinase Antibody, HMINK Antibody, MEKKK 6 Antibody, Mink 2 Antibody, B55 Antibody, ZC3 Antibody, MEK kinase kinase 6 Antibody, Misshapen-like kinase 1 Antibody, YSK2 Antibody
Family / Subfamily:	Protein Kinase / MSN
Host	MINK1 antibody was produced in Rabbit
Clonality:	Polyclonal
Immunogen Species:	MINK1 / MINK antibody was raised against Human
Antigen Type:	Synthetic peptide
Immunogen:	MINK1 / MINK antibody was raised against synthetic 18 amino acid peptide from internal region of human MINK1 / MAP4K6. Percent identity with other species by BLAST analysis: Human, Gorilla, Gibbon, Monkey, Marmoset, Mouse, Rat, Bat, Hamster, Elephant, Panda, Horse, Pig, Opossum (100%).
Specificity:	Human MINK1 / MAP4K6. BLAST analysis of the peptide immunogen showed no homology with other human proteins.
Epitope:	Internal
Reactivity:	Human, Gorilla, Gibbon, Monkey, Mouse, Rat, Bat, Hamster, Horse, Pig
Purification:	Immunoaffinity purified
Presentation:	PBS, 0.1% sodium azide.
Recommended Storage:	Long term: -70°C; Short term: +4°C
Usage Summary:	Immunohistochemistry: LS-A7408 was validated for use in immunohistochemistry on a panel of 21 formalin-fixed, paraffin-embedded (FFPE) human tissues after heat induced antigen retrieval in pH 6.0 citrate buffer. After incubation with the primary antibody, slides were incubated with biotinylated secondary antibody, followed by alkaline phosphatase-streptavidin and chromogen. The stained slides were evaluated by a pathologist to confirm staining specificity. The optimal working concentration for LS-A7408 was determined to be 5 ug/ml.
Uses:	IHC - Paraffin (5 µg/ml), ELISA (Optimal dilution to be determined by the researcher)
Size:	50 µg
Concentration:	0.6 mg/ml

Immunohistochemistry Image:



Anti-MINK1 / MAP4K6 antibody LS-A7408 IHC of human liver. Immunohistochemistry of formalin-fixed, paraffin-embedded tissue after heat-induced antigen retrieval.

Requested From:

Japan

Laboratory Reagent For In Vitro Research Use Only

Not for resale without prior written consent from LifeSpan BioSciences, Inc.

Created on 9/23/2014

© 2014 LifeSpan BioSciences