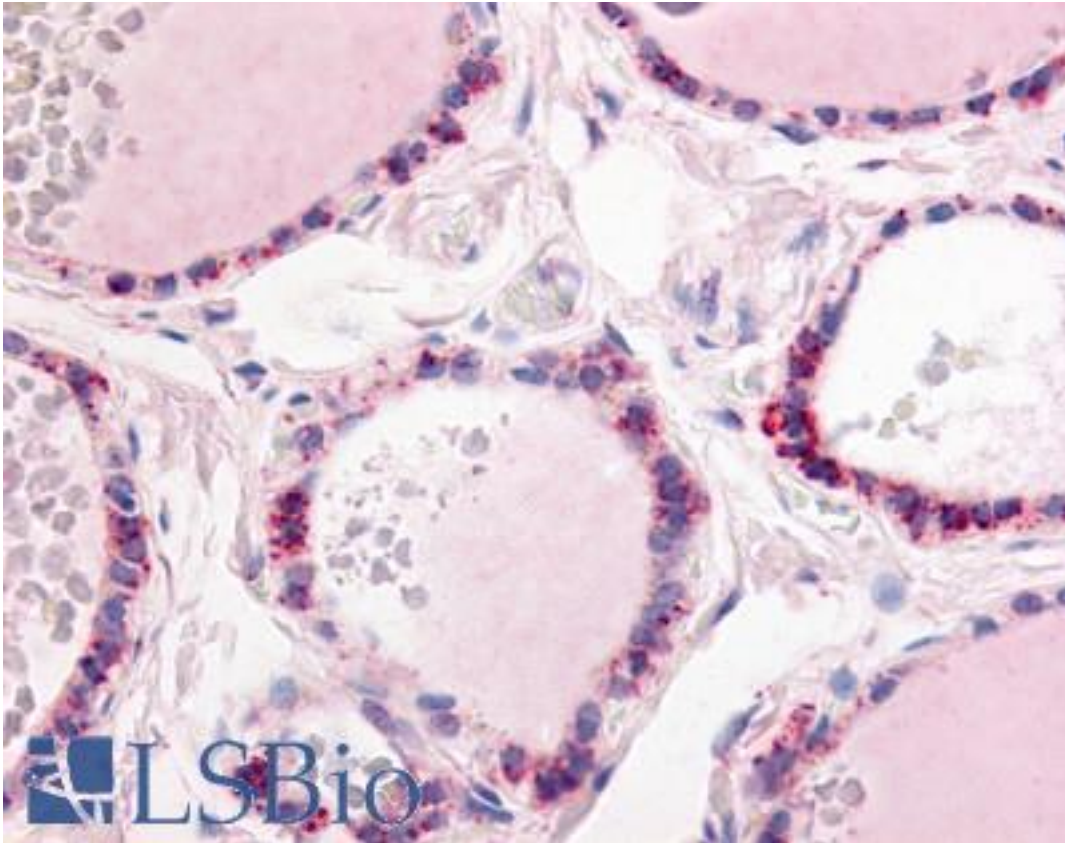


PDE1C Rabbit anti-Human Polyclonal (C-Terminus) Antibody - LS-A737 - LSBio	
CatalogID:	LS-A737
Target:	phosphodiesterase 1C, calmodulin-dependent 70kDa (PDE1C)
Synonyms:	PDE1C Antibody, HCam-3 Antibody, Hcam3 Antibody, Phosphodiesterase 1c Antibody, Cam-PDE 1C Antibody
Family / Subfamily:	Phosphodiesterase / PDE - cAMP/cGMP dual-specific, Ca/Calmodulin-dependent
Host	PDE1C antibody was produced in Rabbit
Clonality:	Polyclonal
Immunogen Species:	PDE1C antibody was raised against Human
Antigen Type:	Synthetic peptide
Immunogen:	PDE1C antibody was raised against synthetic 16 amino acid peptide from C-terminus of human PDE1C. Percent identity with other species by BLAST analysis: Human, Gorilla, Orangutan, Gibbon, Monkey, Marmoset, Mouse, Rat, Bovine, Dog, Bat, Hamster, Elephant, Panda, Horse, Rabbit (100%); Opossum (88%).
Specificity:	Human PDE1C. BLAST analysis of the peptide immunogen showed no homology with other human proteins.
Epitope:	C-Terminus
Reactivity:	Human, Gorilla, Orangutan, Gibbon, Monkey, Mouse, Rat, Bat, Bovine, Dog, Hamster, Horse, Rabbit
Purification:	Immunoaffinity purified
Presentation:	PBS, 0.1% sodium azide.
Recommended Storage:	Long term: -70°C; Short term: +4°C
Usage Summary:	Immunohistochemistry: LS-A737 was validated for use in immunohistochemistry on a panel of 21 formalin-fixed, paraffin-embedded (FFPE) human tissues after heat induced antigen retrieval in pH 6.0 citrate buffer. After incubation with the primary antibody, slides were incubated with biotinylated secondary antibody, followed by alkaline phosphatase-streptavidin and chromogen. The stained slides were evaluated by a pathologist to confirm staining specificity. The optimal working concentration for LS-A737 was determined to be 5 ug/ml.
Uses:	IHC - Paraffin (5 µg/ml) (Optimal dilution to be determined by the researcher)
Size:	50 µg
Concentration:	0.21 mg/ml

Immunohistochemistry Image:



Anti-PDE1C antibody LS-A737 IHC of human thyroid. Immunohistochemistry of formalin-fixed, paraffin-embedded tissue after heat-induced antigen retrieval.

Requested From:

Japan

Laboratory Reagent For In Vitro Research Use Only

Not for resale without prior written consent from LifeSpan BioSciences, Inc.

Created on 9/23/2014

© 2014 LifeSpan BioSciences