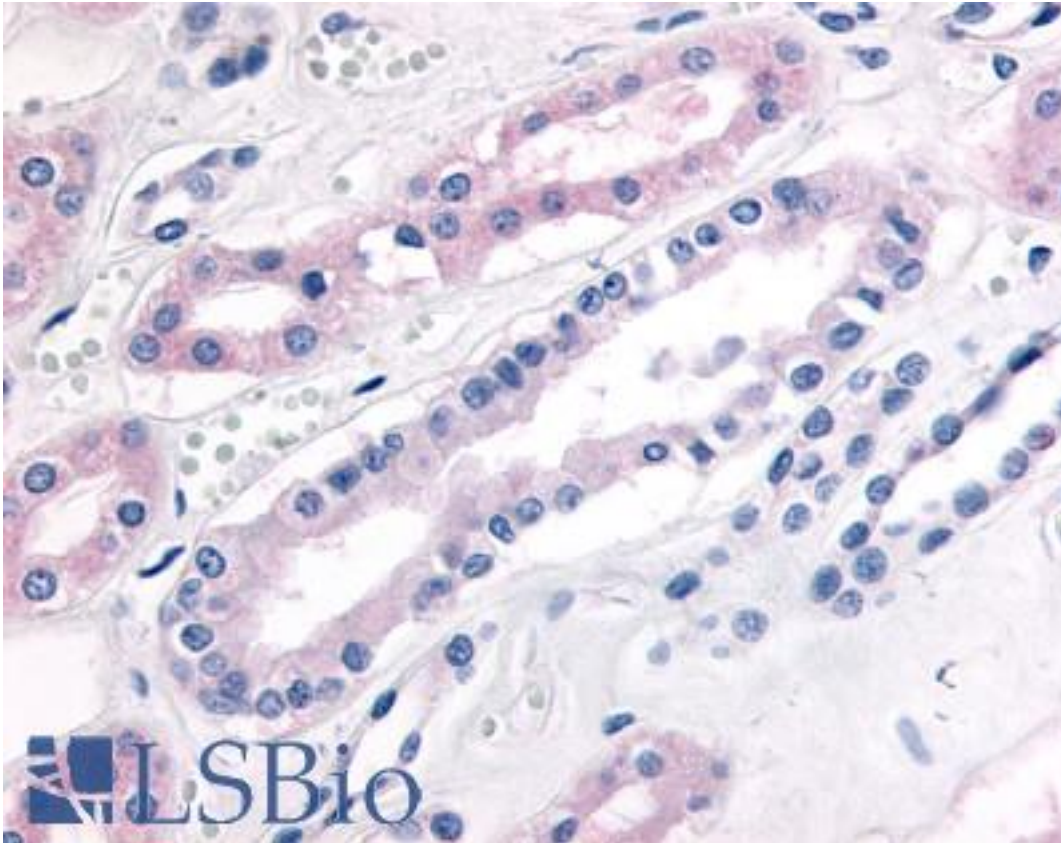


Pde2 / PDE2A Rabbit anti-Human Polyclonal (N-Terminus) Antibody - LS-A733 - LSBio

CatalogID:	LS-A733
Target:	phosphodiesterase 2A, cGMP-stimulated (PDE2A)
Synonyms:	PDE2A Antibody, CGMP-stimulated PDE Antibody, Cyclic GMP-stimulated PDE Antibody, PDE2 Antibody, Pde2a2 Antibody, PED2A4 Antibody, Phosphodiesterase 2A Antibody, CGS-PDE Antibody, CGSPDE Antibody, PDE2A1 Antibody, Pde2a3 Antibody
Family / Subfamily:	Phosphodiesterase / PDE - cAMP/cGMP dual-specific, cGMP-stimulated
Host	PDE2A antibody was produced in Rabbit
Clonality:	Polyclonal
Immunogen Species:	Pde2 / PDE2A antibody was raised against Human
Antigen Type:	Synthetic peptide
Immunogen:	Pde2 / PDE2A antibody was raised against synthetic 17 amino acid peptide from N-terminus of human PDE2A. Percent identity with other species by BLAST analysis: Human, Gorilla, Marmoset, Dog, Panda, Horse (100%); Gibbon, Monkey, Mouse, Rat, Bovine, Elephant, Rabbit (94%); Pig (88%).
Specificity:	Human PDE2A. BLAST analysis of the peptide immunogen showed no homology with other human proteins, except KCNH2 (59%).
Epitope:	N-Terminus
Reactivity:	Human, Gorilla, Dog, Horse
Predicted Reactivity:	Gibbon, Monkey, Mouse, Rat, Bovine, Rabbit
Purification:	Immunoaffinity purified
Presentation:	PBS, 0.1% sodium azide.
Recommended Storage:	Long term: -70°C; Short term: +4°C
Usage Summary:	Immunohistochemistry: LS-A733 was validated for use in immunohistochemistry on a panel of 21 formalin-fixed, paraffin-embedded (FFPE) human tissues after heat induced antigen retrieval in pH 6.0 citrate buffer. After incubation with the primary antibody, slides were incubated with biotinylated secondary antibody, followed by alkaline phosphatase-streptavidin and chromogen. The stained slides were evaluated by a pathologist to confirm staining specificity. The optimal working concentration for LS-A733 was determined to be 20 ug/ml.
Uses:	IHC - Paraffin (20 µg/ml) (Optimal dilution to be determined by the researcher)
Size:	50 µg
Concentration:	1 mg/ml

Immunohistochemistry Image:



Anti-PDE2A antibody LS-A733 IHC of human kidney. Immunohistochemistry of formalin-fixed, paraffin-embedded tissue after heat-induced antigen retrieval.

Requested From:

Japan

Laboratory Reagent For In Vitro Research Use Only

Not for resale without prior written consent from LifeSpan BioSciences, Inc.

Created on 9/23/2014

© 2014 LifeSpan BioSciences