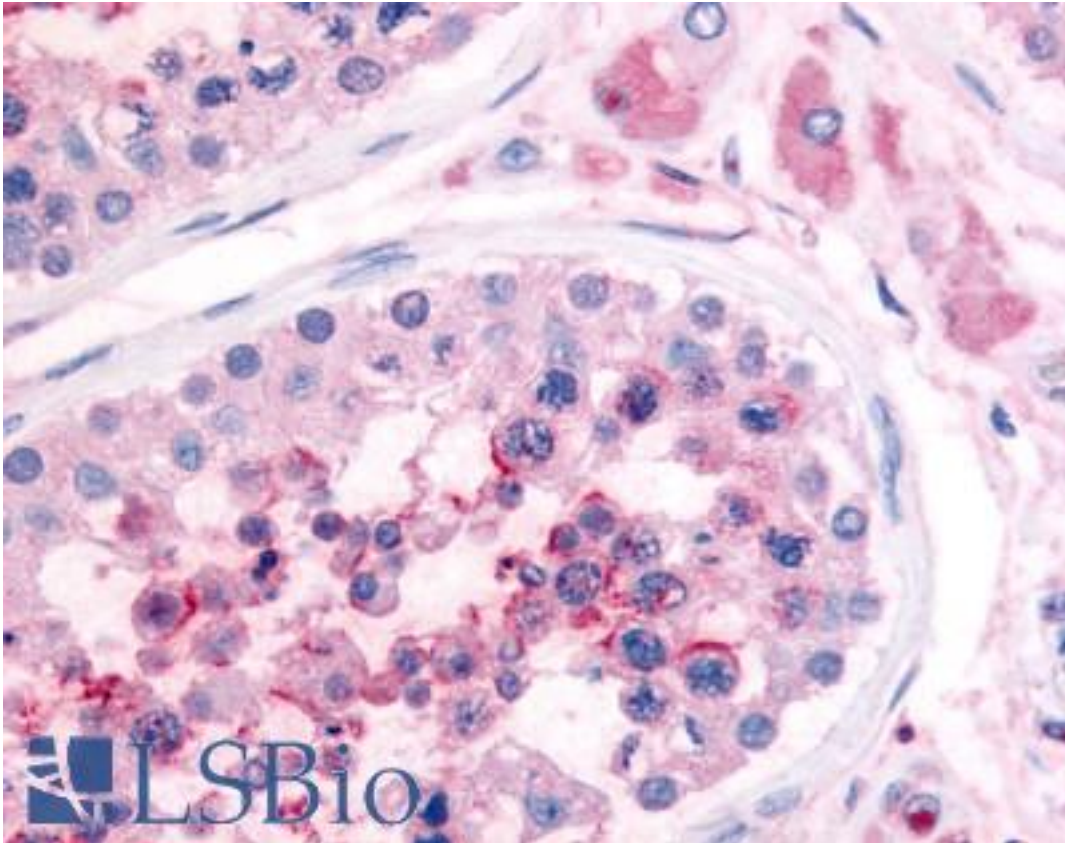


**PDE3A Rabbit anti-Human Polyclonal (N-Terminus) Antibody - LS-A731 - LSBio**

<b>CatalogID:</b>	LS-A731
<b>Target:</b>	phosphodiesterase 3A, cGMP-inhibited (PDE3A)
<b>Synonyms:</b>	PDE3A Antibody, CGI-PDE-A Antibody, HcGIP2 Antibody, Phosphodiesterase 3a Antibody, Phosphodiesterase isoform 3a Antibody, CGI-PDE Antibody, CGI-PDE A Antibody, CGIP2 Antibody, HPDE-3A Antibody, Phosphodiesterase type 3A Antibody
<b>Family / Subfamily:</b>	Phosphodiesterase / PDE - cAMP/cGMP dual-specific, cGMP-inhibited
<b>Host</b>	PDE3A antibody was produced in Rabbit
<b>Clonality:</b>	Polyclonal
<b>Immunogen Species:</b>	PDE3A antibody was raised against Human
<b>Antigen Type:</b>	Synthetic peptide
<b>Immunogen:</b>	PDE3A antibody was raised against synthetic 19 amino acid peptide from near N-terminus of human PDE3A. Percent identity with other species by BLAST analysis: Human, Gibbon, Monkey (94%).
<b>Specificity:</b>	Human PDE3A. BLAST analysis of the peptide immunogen showed no homology with other human proteins, except EDN3 (58%).
<b>Epitope:</b>	N-Terminus
<b>Reactivity:</b>	Human
<b>Predicted Reactivity:</b>	Gibbon, Monkey
<b>Purification:</b>	Immunoaffinity purified
<b>Presentation:</b>	PBS, 0.1% sodium azide.
<b>Recommended Storage:</b>	Long term: -70°C; Short term: +4°C
<b>Usage Summary:</b>	Immunohistochemistry: LS-A731 was validated for use in immunohistochemistry on a panel of 21 formalin-fixed, paraffin-embedded (FFPE) human tissues after heat induced antigen retrieval in pH 6.0 citrate buffer. After incubation with the primary antibody, slides were incubated with biotinylated secondary antibody, followed by alkaline phosphatase-streptavidin and chromogen. The stained slides were evaluated by a pathologist to confirm staining specificity. The optimal working concentration for LS-A731 was determined to be 20 ug/ml.
<b>Uses:</b>	IHC - Paraffin (20 µg/ml) (Optimal dilution to be determined by the researcher)
<b>Size:</b>	50 µg
<b>Concentration:</b>	1 mg/ml

**Immunohistochemistry Image:**



Anti-PDE3A antibody LS-A731 IHC of human testis. Immunohistochemistry of formalin-fixed, paraffin-embedded tissue after heat-induced antigen retrieval.

**Requested From:**

Japan

Laboratory Reagent For In Vitro Research Use Only

Not for resale without prior written consent from LifeSpan BioSciences, Inc.

Created on 9/23/2014

© 2014 LifeSpan BioSciences