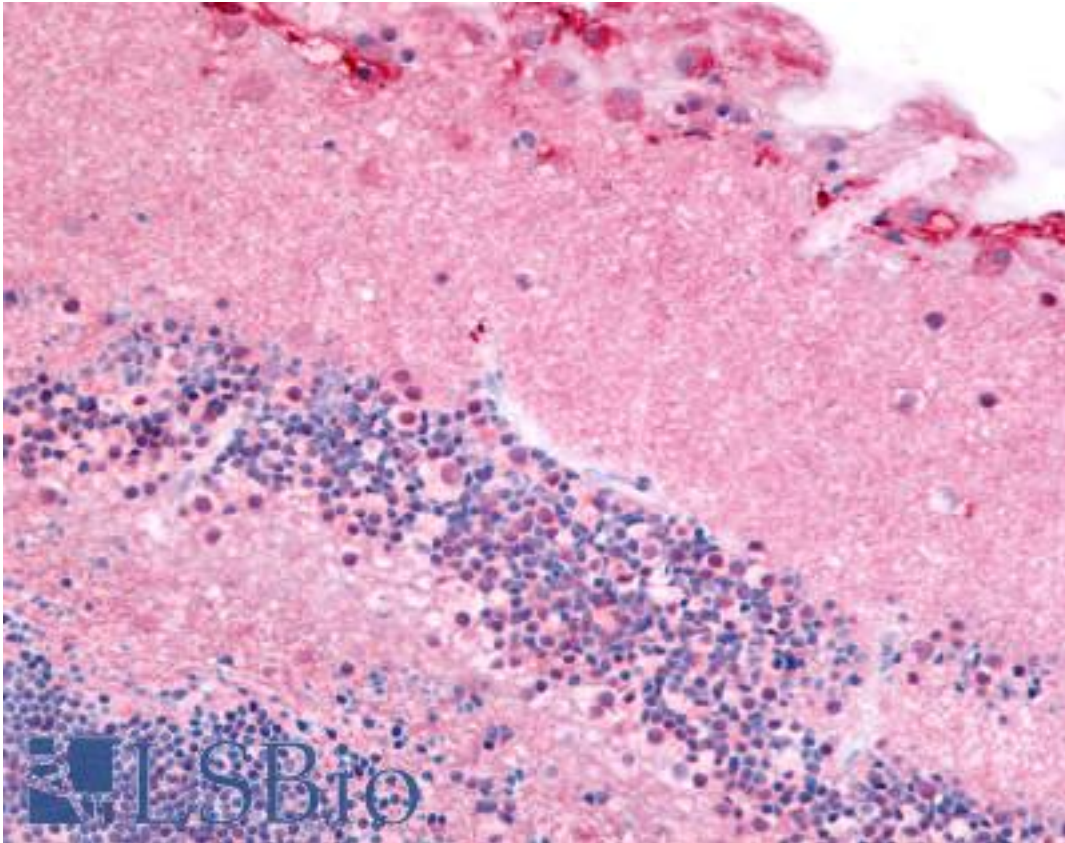


| PDE6A Rabbit anti-Human Polyclonal (N-Terminus) Antibody - LS-A730 - LSBio | |
|--|--|
| CatalogID: | LS-A730 |
| Target: | phosphodiesterase 6A, cGMP-specific, rod, alpha (PDE6A) |
| Synonyms: | PDE6A Antibody, Alpha-PDE Antibody, CGMP phosphodiesterase alpha Antibody, CGPR-A Antibody, PDE6alpha Antibody, PDE V-B1 Antibody, PDEA Antibody, Phosphodiesterase 6a Antibody, RP43 Antibody, GMP-PDE alpha Antibody |
| Family / Subfamily: | Phosphodiesterase / PDE - photoreceptor |
| Host | PDE6A antibody was produced in Rabbit |
| Clonality: | Polyclonal |
| Immunogen Species: | PDE6A antibody was raised against Human |
| Antigen Type: | Synthetic peptide |
| Immunogen: | PDE6A antibody was raised against synthetic 18 amino acid peptide from N-terminus of human PDE6A / PDE6 Alpha. Percent identity with other species by BLAST analysis: Human, Gorilla, Gibbon, Monkey, Marmoset, Mouse, Rat, Hamster (100%); Dog, Panda, Rabbit (94%); Bovine, Bat, Elephant (89%); Horse, Opossum (83%). |
| Specificity: | Human PDE6A / PDE6 Alpha. BLAST analysis of the peptide immunogen showed no homology with other human proteins. |
| Epitope: | N-Terminus |
| Reactivity: | Human, Gorilla, Gibbon, Monkey, Mouse, Rat, Hamster |
| Predicted Reactivity: | Dog, Rabbit |
| Purification: | Immunoaffinity purified |
| Presentation: | PBS, 0.1% sodium azide. |
| Recommended Storage: | Long term: -70°C; Short term: +4°C |
| Usage Summary: | Immunohistochemistry: LS-A730 was validated for use in immunohistochemistry on a panel of 21 formalin-fixed, paraffin-embedded (FFPE) human tissues after heat induced antigen retrieval in pH 6.0 citrate buffer. After incubation with the primary antibody, slides were incubated with biotinylated secondary antibody, followed by alkaline phosphatase-streptavidin and chromogen. The stained slides were evaluated by a pathologist to confirm staining specificity. The optimal working concentration for LS-A730 was determined to be 10 ug/ml. |
| Uses: | IHC - Paraffin (10 - 15 µg/ml) (Optimal dilution to be determined by the researcher) |
| Size: | 50 µg |
| Concentration: | 0.23 mg/ml |

Immunohistochemistry Image:



Anti-PDE6A / PDE6 Alpha antibody LS-A730 IHC of human eye, retina.
Immunohistochemistry of formalin-fixed, paraffin-embedded tissue after heat-induced antigen retrieval.

Requested From:

Japan

Laboratory Reagent For In Vitro Research Use Only

Not for resale without prior written consent from LifeSpan BioSciences, Inc.

Created on 9/23/2014

© 2014 LifeSpan BioSciences