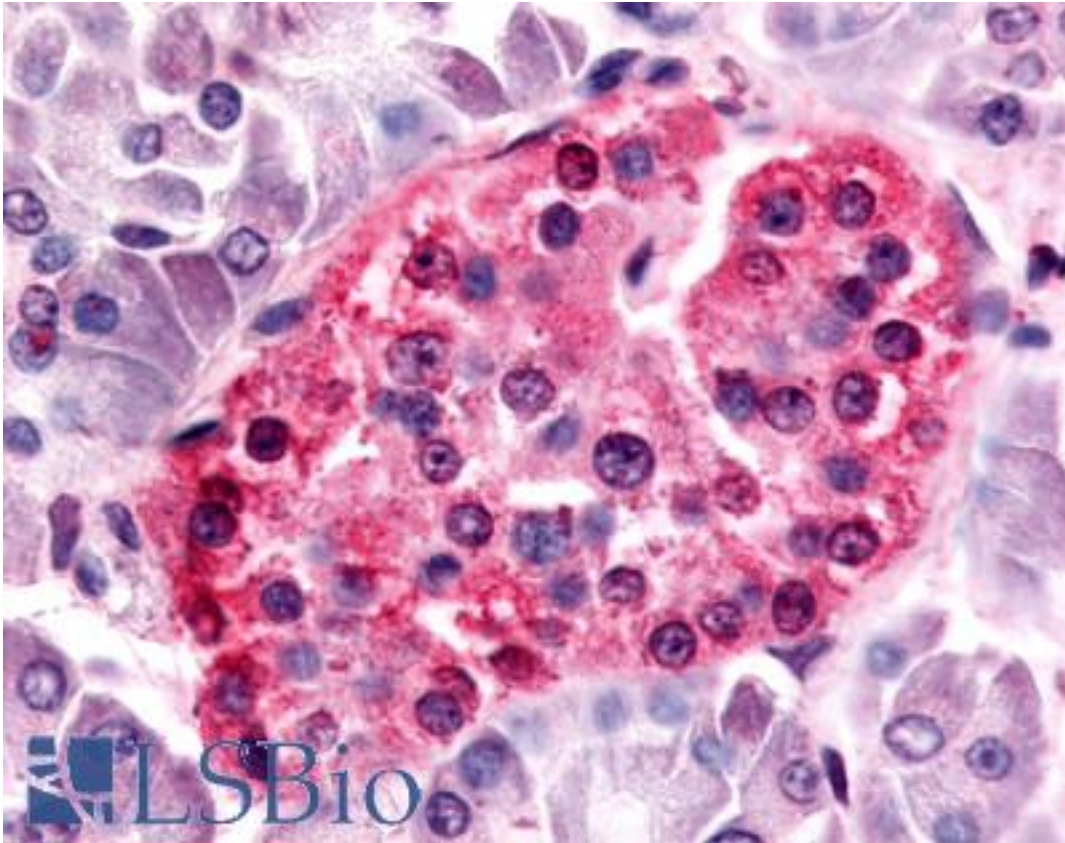


SGK3 Rabbit anti-Human Polyclonal (Internal) Antibody - LS-A7240 - LSBio

CatalogID:	LS-A7240
Target:	serum/glucocorticoid regulated kinase family, member 3 (SGK3)
Synonyms:	SGK3 Antibody, CISK Antibody, SGKL Antibody
Family / Subfamily:	Protein Kinase / SGK
Host	SGK3 antibody was produced in Rabbit
Clonality:	Polyclonal
Immunogen Species:	SGK3 antibody was raised against Human
Antigen Type:	Synthetic peptide
Immunogen:	SGK3 antibody was raised against synthetic 20 amino acid peptide from internal region of human SGK3. Percent identity with other species by BLAST analysis: Human, Gorilla, Orangutan, Gibbon, Mouse, Rat, Hamster, Panda, Dog, Bat (100%); Monkey, Marmoset, Elephant, Bovine, Horse, Rabbit (95%); Turkey, Chicken, Platypus (90%); Opossum, Lizard (85%).
Specificity:	Human SGK3. BLAST analysis of the peptide immunogen showed no homology with other human proteins.
Epitope:	Internal
Reactivity:	Human, Gorilla, Orangutan, Gibbon, Mouse, Rat, Bat, Dog, Hamster
Predicted Reactivity:	Monkey, Bovine, Horse, Rabbit, Chicken
Purification:	Immunoaffinity purified
Presentation:	PBS, 0.1% sodium azide.
Recommended Storage:	Long term: -70°C; Short term: +4°C
Uses:	IHC - Paraffin (1 - 36 µg/ml) (Optimal dilution to be determined by the researcher)
Size:	50 µg
Concentration:	1 mg/ml

Immunohistochemistry Image:



Anti-SGK3 antibody LS-A7240 IHC of human islet of Langerhans. Immunohistochemistry of formalin-fixed, paraffin-embedded tissue after heat-induced antigen retrieval.

Requested From:

Japan

Laboratory Reagent For In Vitro Research Use Only

Not for resale without prior written consent from LifeSpan BioSciences, Inc.

Created on 9/23/2014

© 2014 LifeSpan BioSciences