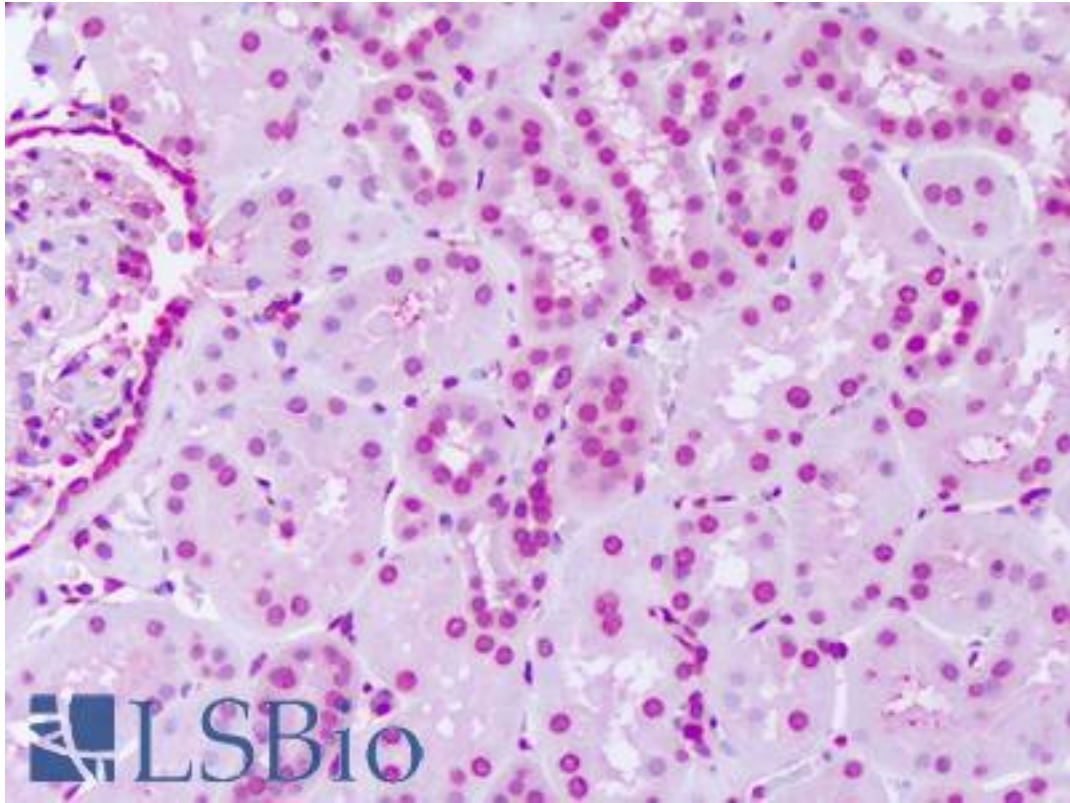


SGK2 Rabbit anti-Human Polyclonal (N-Terminus) Antibody - LS-A7218 - LSBio

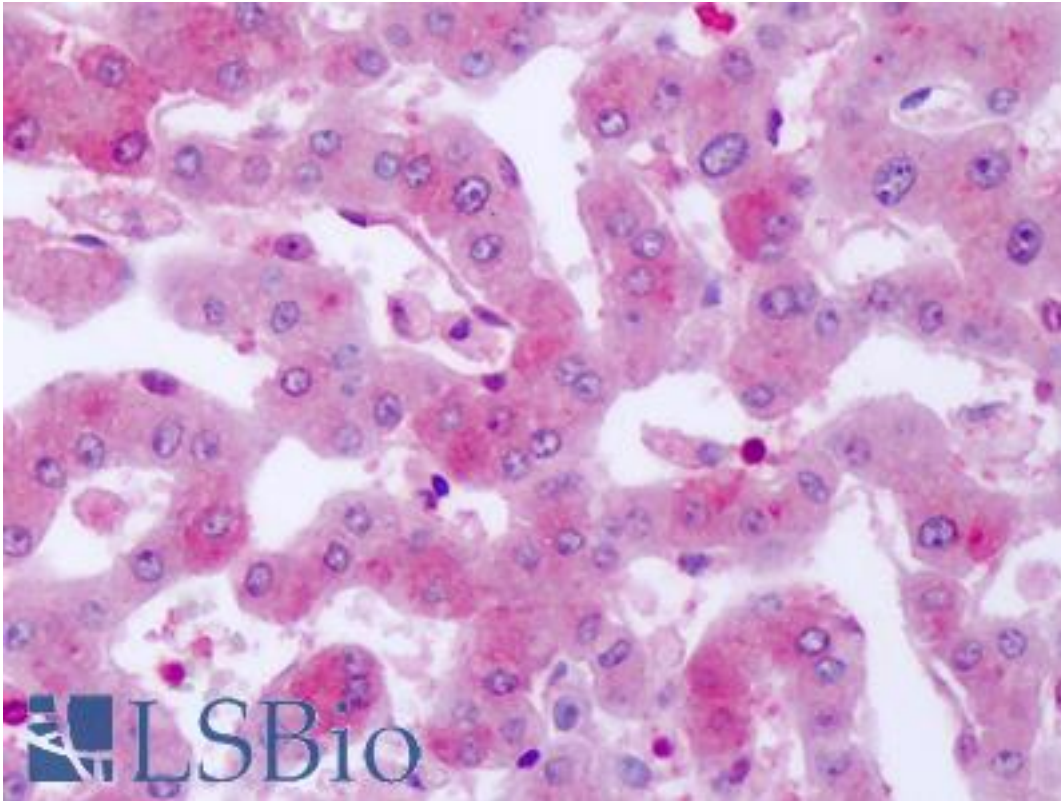
<b>CatalogID:</b>	LS-A7218
<b>Target:</b>	serum/glucocorticoid regulated kinase 2 (SGK2)
<b>Synonyms:</b>	SGK2 Antibody, DJ138B7.2 Antibody, H-SGK2 Antibody, Hsgk2 Antibody
<b>Family / Subfamily:</b>	Protein Kinase / SGK
<b>Host</b>	SGK2 antibody was produced in Rabbit
<b>Clonality:</b>	Polyclonal
<b>Immunogen Species:</b>	SGK2 antibody was raised against Human
<b>Antigen Type:</b>	Synthetic peptide
<b>Immunogen:</b>	SGK2 antibody was raised against synthetic 18 amino acid peptide from near N-terminus of human SGK2. Percent identity with other species by BLAST analysis: Human, Gorilla, Gibbon (100%); Monkey (89%); Marmoset (83%).
<b>Specificity:</b>	Human SGK2. BLAST analysis of the peptide immunogen showed no homology with other human proteins.
<b>Epitope:</b>	N-Terminus
<b>Reactivity:</b>	Human, Gorilla, Gibbon
<b>Purification:</b>	Immunoaffinity purified
<b>Presentation:</b>	PBS, 0.1% sodium azide.
<b>Recommended Storage:</b>	Long term: -70°C; Short term: +4°C
<b>Uses:</b>	IHC - Paraffin (1 µg/ml) (Optimal dilution to be determined by the researcher)
<b>Size:</b>	50 µg
<b>Concentration:</b>	1 mg/ml

**Immunohistochemistry Image:**



Anti-SGK2 antibody IHC of human kidney. Immunohistochemistry of formalin-fixed, paraffin-embedded tissue after heat-induced antigen retrieval. Antibody LS-A7218 dilution 1 ug/ml.

**Immunohistochemistry Image:**



Anti-SGK2 antibody IHC of human liver. Immunohistochemistry of formalin-fixed, paraffin-embedded tissue after heat-induced antigen retrieval. Antibody LS-A7218 dilution 1 ug/ml.

**Requested From:**

Japan

Laboratory Reagent For In Vitro Research Use Only

Not for resale without prior written consent from LifeSpan BioSciences, Inc.

Created on 9/23/2014

© 2014 LifeSpan BioSciences