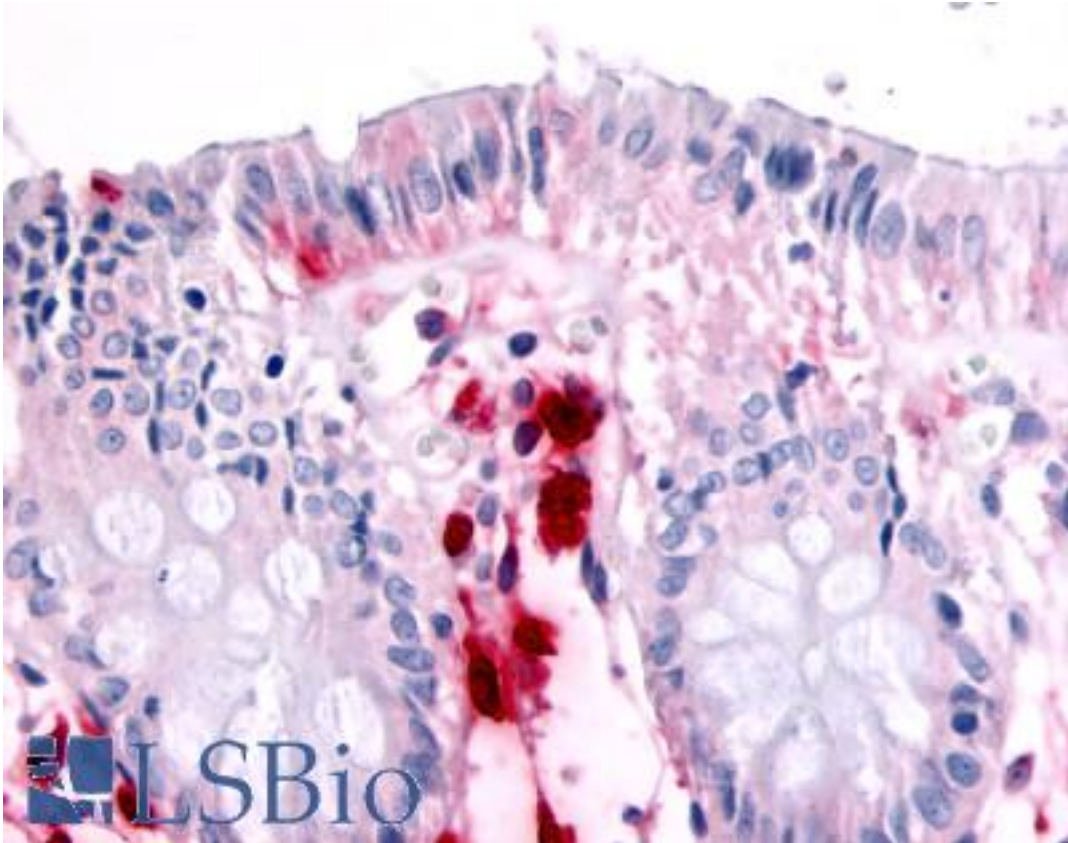


**MST1R / RON Rabbit anti-Human Polyclonal (Internal) Antibody - LS-A7187 - LSBio**

<b>CatalogID:</b>	LS-A7187
<b>Target:</b>	macrophage stimulating 1 receptor (c-met-related tyrosine kinase) (MST1R)
<b>Synonyms:</b>	MST1R Antibody, C-met-related tyrosine kinase Antibody, CD136 Antibody, CDw136 Antibody, CD136 antigen Antibody, Friend virus susceptibility 2 Antibody, Fv2 Antibody, MSP receptor Antibody, p185-Ron Antibody, PTK8 protein tyrosine kinase 8 Antibody, RON Antibody, Soluble RON variant 3 Antibody, Soluble RON variant 1 Antibody, MST1R variant RON30 Antibody, Oncogene RON Antibody, PTK8 Antibody, MST1R variant RON62 Antibody, Protein-tyrosine kinase 8 Antibody, RON variant E2E3 Antibody, Soluble RON variant 2 Antibody, Soluble RON variant 4 Antibody
<b>Family / Subfamily:</b>	Protein Kinase / HGF Receptor/MET
<b>Host</b>	MST1R antibody was produced in Rabbit
<b>Clonality:</b>	Polyclonal
<b>Immunogen Species:</b>	MST1R / RON antibody was raised against Human
<b>Antigen Type:</b>	Synthetic peptide
<b>Immunogen:</b>	MST1R / RON antibody was raised against synthetic 18 amino acid peptide from internal region of human MST1R / RON. Percent identity with other species by BLAST analysis: Human, Gorilla, Monkey, Bat, Panda (100%); Gibbon, Dog, Bovine (94%); Hamster, Elephant (89%); Marmoset, Horse (83%).
<b>Specificity:</b>	Human MST1R / RON. BLAST analysis of the peptide immunogen showed no homology with other human proteins.
<b>Epitope:</b>	Internal
<b>Reactivity:</b>	Human, Gorilla, Monkey, Bat
<b>Predicted Reactivity:</b>	Gibbon, Bovine, Dog
<b>Purification:</b>	Immunoaffinity purified
<b>Presentation:</b>	PBS, 0.1% sodium azide.
<b>Recommended Storage:</b>	Long term: -70°C; Short term: +4°C
<b>Usage Summary:</b>	Immunohistochemistry: LS-A7187 was validated for use in immunohistochemistry on a panel of 21 formalin-fixed, paraffin-embedded (FFPE) human tissues after heat induced antigen retrieval in pH 6.0 citrate buffer. After incubation with the primary antibody, slides were incubated with biotinylated secondary antibody, followed by alkaline phosphatase-streptavidin and chromogen. The stained slides were evaluated by a pathologist to confirm staining specificity. The optimal working concentration for LS-A7187 was determined to be 2.4 ug/ml.
<b>Uses:</b>	IHC - Paraffin (2.4 µg/ml) (Optimal dilution to be determined by the researcher)
<b>Size:</b>	50 µg
<b>Concentration:</b>	1 mg/ml

**Immunohistochemistry Image:**



Anti-MST1R / RON antibody LS-A7187 IHC of human colon, surface epithelium.  
Immunohistochemistry of formalin-fixed, paraffin-embedded tissue after heat-induced antigen retrieval.

**Requested From:**

Japan

Laboratory Reagent For In Vitro Research Use Only

Not for resale without prior written consent from LifeSpan BioSciences, Inc.

Created on 9/23/2014

© 2014 LifeSpan BioSciences