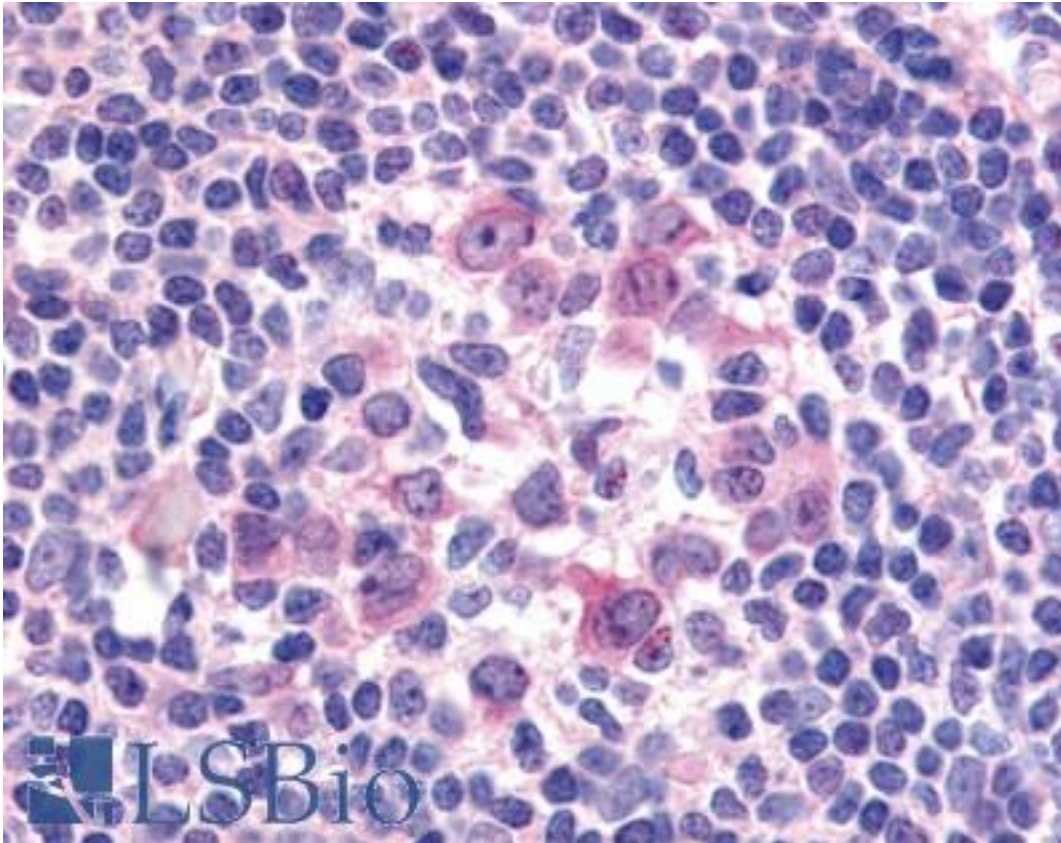


CD135 / FLT3 Rabbit anti-Human Polyclonal Antibody - LS-A7147 - LSBio

CatalogID:	LS-A7147
Target:	fms-related tyrosine kinase 3 (FLT3)
Synonyms:	FLT3 Antibody, CD135 Antibody, CD135 antigen Antibody, Fetal liver kinase 2 Antibody, Fetal liver kinase-2 Antibody, FL cytokine receptor Antibody, FLK2 Antibody, FLT-3 Antibody, Fms-like tyrosine kinase 3 Antibody, Stem cell tyrosine kinase 1 Antibody, STK-1 Antibody, FLK-2 Antibody, Fms-related tyrosine kinase 3 Antibody, STK1 Antibody
Family / Subfamily:	Protein Kinase / PDGF Receptor
Host	FLT3 antibody was produced in Rabbit
Clonality:	Polyclonal
Immunogen Species:	CD135 / FLT3 antibody was raised against Human
Immunogen:	CD135 / FLT3 antibody was raised against synthetic 18 amino acid peptide from human FLT3 / CD135. Percent identity with other species by BLAST analysis: Human, Gorilla, Gibbon, Monkey, Marmoset, Panda, Dog, Horse, Rabbit, Pig (100%); Elephant, Bovine, Bat (94%); Mouse, Hamster (89%); Rat (83%).
Specificity:	Human FLT3 / CD135. BLAST analysis of the peptide immunogen showed no homology with other human proteins.
Reactivity:	Human, Gorilla, Gibbon, Monkey, Dog, Horse, Pig, Rabbit
Predicted Reactivity:	Bat, Bovine
Purification:	Immunoaffinity purified
Presentation:	PBS, 0.1% sodium azide.
Recommended Storage:	Long term: -70°C; Short term: +4°C
Uses:	IHC - Paraffin (8 µg/ml) (Optimal dilution to be determined by the researcher)
Size:	50 µg
Concentration:	1 mg/ml

Immunohistochemistry Image:



Anti-FLT3 / CD135 antibody LS-A7147 IHC of human tonsil. Immunohistochemistry of formalin-fixed, paraffin-embedded tissue after heat-induced antigen retrieval.

Requested From:

Japan

Laboratory Reagent For In Vitro Research Use Only

Not for resale without prior written consent from LifeSpan BioSciences, Inc.

Created on 9/23/2014

© 2014 LifeSpan BioSciences