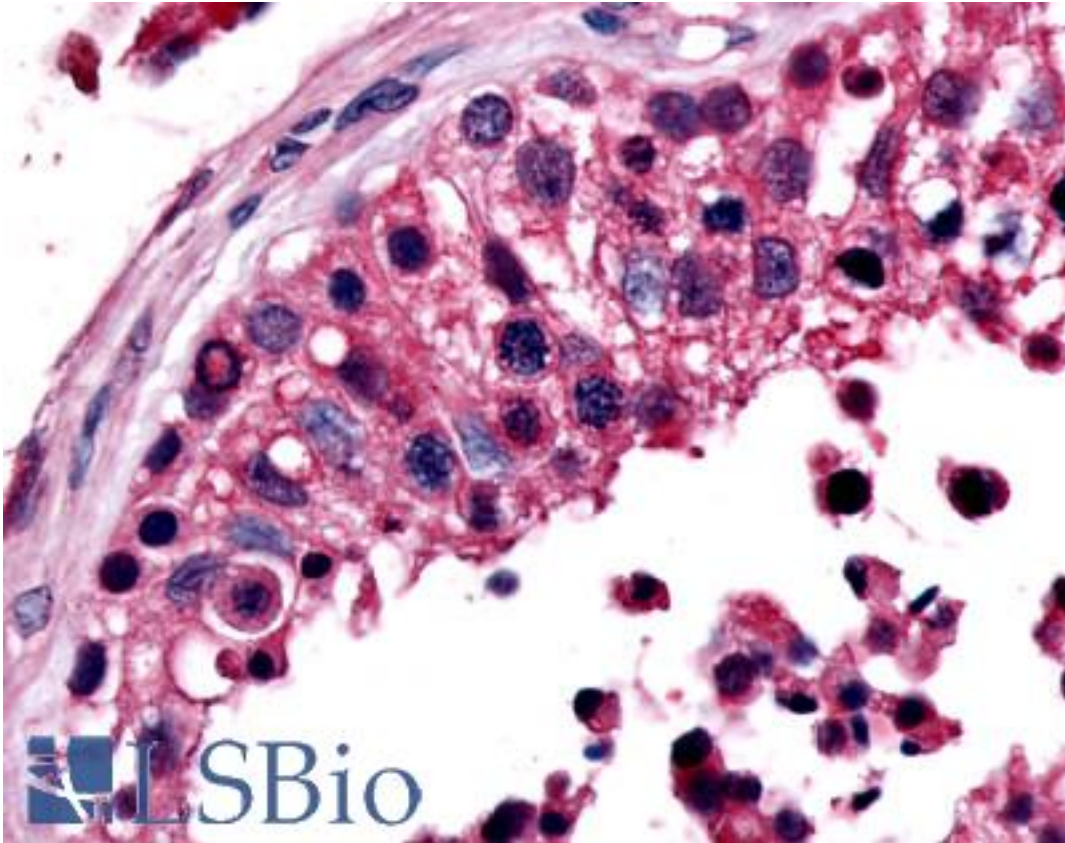


| ESRRB / ERR Beta Rabbit anti-Human Polyclonal (Ligand-binding Domain) Antibody - LS-A7131 - LSBio |  |
|---|--|
| <b>CatalogID:</b>   | LS-A7131   |
| <b>Target:</b>  | estrogen-related receptor beta (ESRRB)   |
| <b>Synonyms:</b>  | ESRRB Antibody, DFNB35 Antibody, ERRb Antibody, ERRbeta-2 Antibody, ESRL2 Antibody, Estrogen receptor-like 2 Antibody, ERR-beta Antibody, ERRB2 Antibody, ERRbeta Antibody, NR3B2 Antibody, Nuclear receptor ERRB2 Antibody, Orphan nuclear receptor Antibody, ERR beta-2 Antibody, ERR2 Antibody, Estrogen-related receptor 2 Antibody, Estrogen-related receptor beta Antibody, Steroid hormone receptor ERR2 Antibody |
| <b>Family / Subfamily:</b>  | NHR / NR3 Steroid receptor   |
| <b>Host</b>   | ESRRB antibody was produced in Rabbit  |
| <b>Clonality:</b>   | Polyclonal   |
| <b>Immunogen Species:</b>   | ESRRB / ERR Beta antibody was raised against Human   |
| <b>Antigen Type:</b>  | Synthetic peptide  |
| <b>Immunogen:</b>   | ESRRB / ERR Beta antibody was raised against synthetic 15 amino acid peptide from ligand-binding domain of human ESRRB. Percent identity with other species by BLAST analysis: Human, Gorilla, Gibbon, Monkey, Marmoset, Hamster, Panda, Dog, Bovine, Horse, Rabbit, Pig, Opossum (100%); Mouse, Rat, Elephant, Turkey, Chicken, Lizard (93%); Bat (87%); Stickleback, Medaka, Pufferfish, Zebrafish (80%).              |
| <b>Specificity:</b>   | Human ESRRB. BLAST analysis of the peptide immunogen showed no homology with other human proteins, except ESRRG (67%).   |
| <b>Epitope:</b>   | Ligand-binding Domain  |
| <b>Reactivity:</b>  | Human, Gorilla, Gibbon, Monkey, Bovine, Dog, Hamster, Horse, Pig, Rabbit   |
| <b>Predicted Reactivity:</b>  | Mouse, Rat, Chicken  |
| <b>Purification:</b>  | Immunoaffinity purified  |
| <b>Presentation:</b>  | PBS, 0.1% sodium azide.  |
| <b>Recommended Storage:</b>   | Long term: -70°C; Short term: +4°C   |
| <b>Uses:</b>  | IHC - Paraffin (3 µg/ml) (Optimal dilution to be determined by the researcher)   |
| <b>Size:</b>  | 50 µg  |
| <b>Concentration:</b>   | 1 mg/ml  |

**Immunohistochemistry Image:**



Anti-ESRRB antibody LS-A7131 IHC of human testis. Immunohistochemistry of formalin-fixed, paraffin-embedded tissue after heat-induced antigen retrieval.

**Requested From:**

Japan

Laboratory Reagent For In Vitro Research Use Only

Not for resale without prior written consent from LifeSpan BioSciences, Inc.

Created on 9/23/2014

© 2014 LifeSpan BioSciences