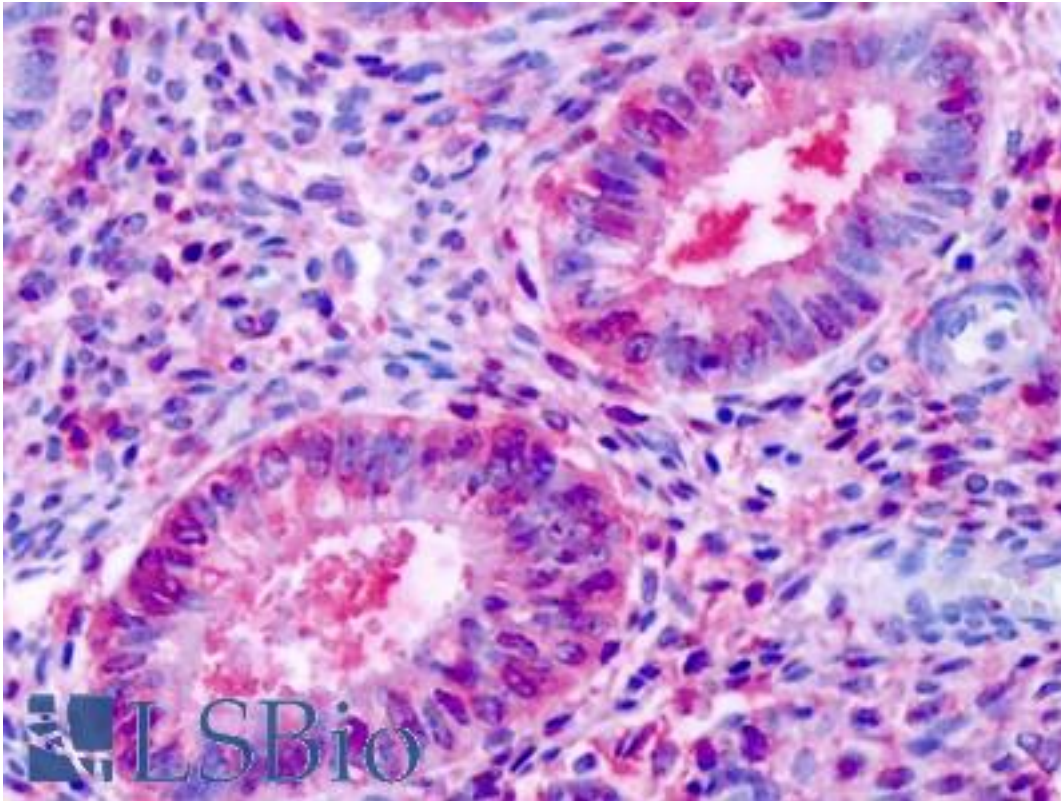


ESRRB / ERR Beta Rabbit anti-Human Polyclonal (N-Terminus) Antibody - LS-A7129 - LSBio	
CatalogID:	LS-A7129
Target:	estrogen-related receptor beta (ESRRB)
Synonyms:	ESRRB Antibody, DFNB35 Antibody, ERRb Antibody, ERRbeta-2 Antibody, ESRL2 Antibody, Estrogen receptor-like 2 Antibody, ERR-beta Antibody, ERB2 Antibody, ERRbeta Antibody, NR3B2 Antibody, Nuclear receptor ERB2 Antibody, Orphan nuclear receptor Antibody, ERR beta-2 Antibody, ERR2 Antibody, Estrogen-related receptor 2 Antibody, Estrogen-related receptor beta Antibody, Steroid hormone receptor ERR2 Antibody
Family / Subfamily:	NHR / NR3 Steroid receptor
Host	ESRRB antibody was produced in Rabbit
Clonality:	Polyclonal
Immunogen Species:	ESRRB / ERR Beta antibody was raised against Human
Antigen Type:	Synthetic peptide
Immunogen:	ESRRB / ERR Beta antibody was raised against synthetic 16 amino acid peptide from N-terminus of human ESRRB. Percent identity with other species by BLAST analysis: Human, Gorilla, Monkey, Marmoset, Horse (100%); Mouse, Rat, Elephant, Panda (94%); Dog, Pig (88%); Bat, Bovine, Rabbit (81%).
Specificity:	Human ESRRB. BLAST analysis of the peptide immunogen showed no homology with other human proteins.
Epitope:	N-Terminus
Reactivity:	Human, Gorilla, Monkey, Horse
Predicted Reactivity:	Mouse, Rat
Purification:	Immunoaffinity purified
Presentation:	PBS, 0.1% sodium azide.
Recommended Storage:	Long term: -70°C; Short term: +4°C
Uses:	IHC - Paraffin (1 µg/ml) (Optimal dilution to be determined by the researcher)
Size:	50 µg
Concentration:	1 mg/ml

Immunohistochemistry Image:



Anti-ESRRB / ERR-Beta antibody IHC of human uterus, endometrial glands.
Immunohistochemistry of formalin-fixed, paraffin-embedded tissue after heat-induced antigen retrieval. Antibody LS-A7129 dilution 1 ug/ml.

Requested From:

Japan

Laboratory Reagent For In Vitro Research Use Only

Not for resale without prior written consent from LifeSpan BioSciences, Inc.

Created on 9/23/2014

© 2014 LifeSpan BioSciences