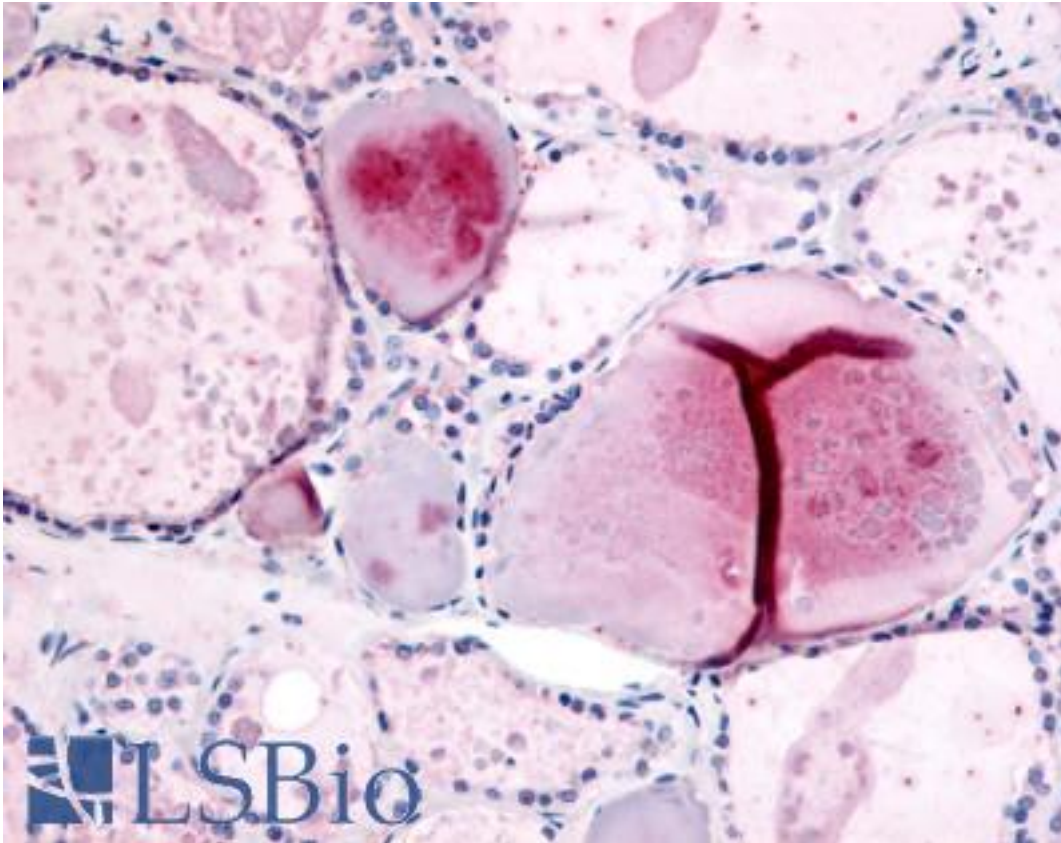


PDE8B Rabbit anti-Human Polyclonal (Internal) Antibody - LS-A710 - LSBio	
CatalogID:	LS-A710
Target:	phosphodiesterase 8B (PDE8B)
Synonyms:	PDE8B Antibody, ADSD Antibody, HsPDE8B Antibody, PPNAD3 Antibody, Phosphodiesterase 8B Antibody
Family / Subfamily:	Phosphodiesterase / PDE - cAMP-specific, high affinity
Host	PDE8B antibody was produced in Rabbit
Clonality:	Polyclonal
Immunogen Species:	PDE8B antibody was raised against Human
Antigen Type:	Synthetic peptide
Immunogen:	PDE8B antibody was raised against synthetic 17 amino acid peptide from internal region of human PDE8B. Percent identity with other species by BLAST analysis: Human, Gorilla, Gibbon, Monkey, Marmoset, Bat, Elephant, Horse (100%); Pig, Opossum (94%); Mouse, Platypus (88%); Rat, Dog (82%).
Specificity:	Human PDE8B. BLAST analysis of the peptide immunogen showed no homology with other human proteins.
Epitope:	Internal
Reactivity:	Human, Gorilla, Gibbon, Monkey, Bat, Horse
Predicted Reactivity:	Pig
Purification:	Immunoaffinity purified
Presentation:	PBS, 0.1% sodium azide.
Recommended Storage:	Long term: -70°C; Short term: +4°C
Usage Summary:	Immunohistochemistry: LS-A710 was validated for use in immunohistochemistry on a panel of 21 formalin-fixed, paraffin-embedded (FFPE) human tissues after heat induced antigen retrieval in pH 6.0 citrate buffer. After incubation with the primary antibody, slides were incubated with biotinylated secondary antibody, followed by alkaline phosphatase-streptavidin and chromogen. The stained slides were evaluated by a pathologist to confirm staining specificity. The optimal working concentration for LS-A710 was determined to be 10 ug/ml.
Uses:	IHC - Paraffin (10 µg/ml) (Optimal dilution to be determined by the researcher)
Size:	50 µg
Concentration:	1 mg/ml

Immunohistochemistry Image:



Anti-PDE8B antibody LS-A710 IHC of human thyroid. Immunohistochemistry of formalin-fixed, paraffin-embedded tissue after heat-induced antigen retrieval.

Requested From:

Japan

Laboratory Reagent For In Vitro Research Use Only

Not for resale without prior written consent from LifeSpan BioSciences, Inc.

Created on 9/23/2014

© 2014 LifeSpan BioSciences