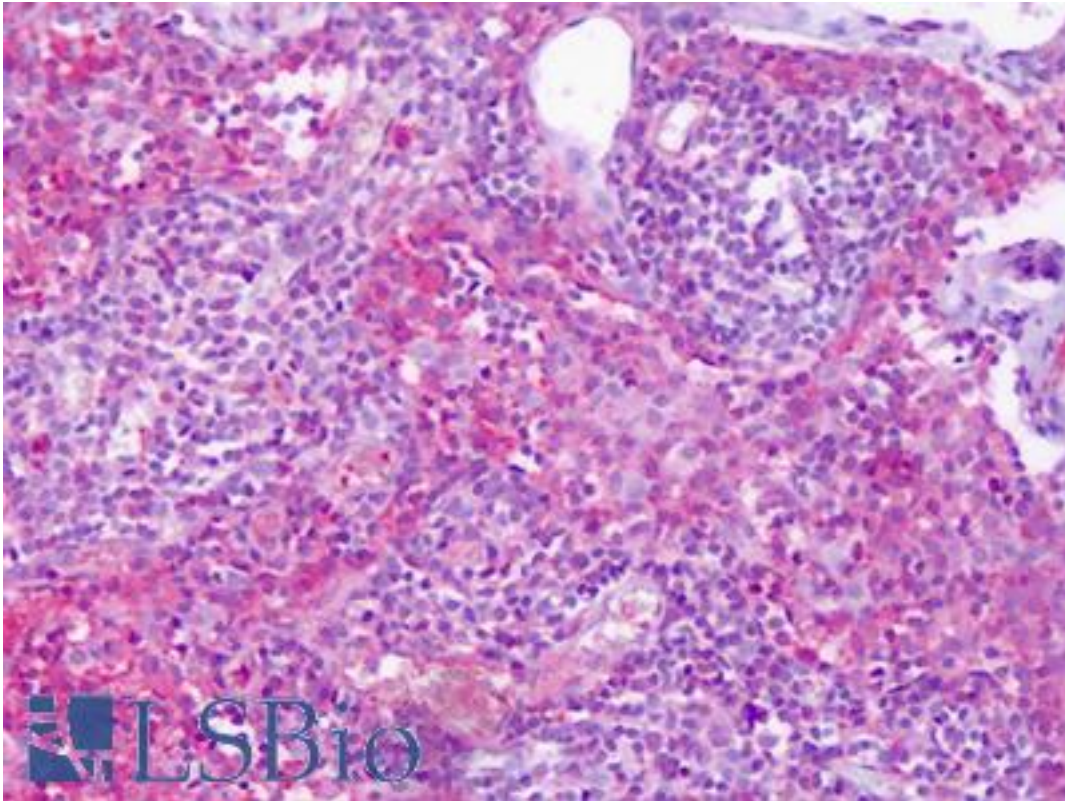


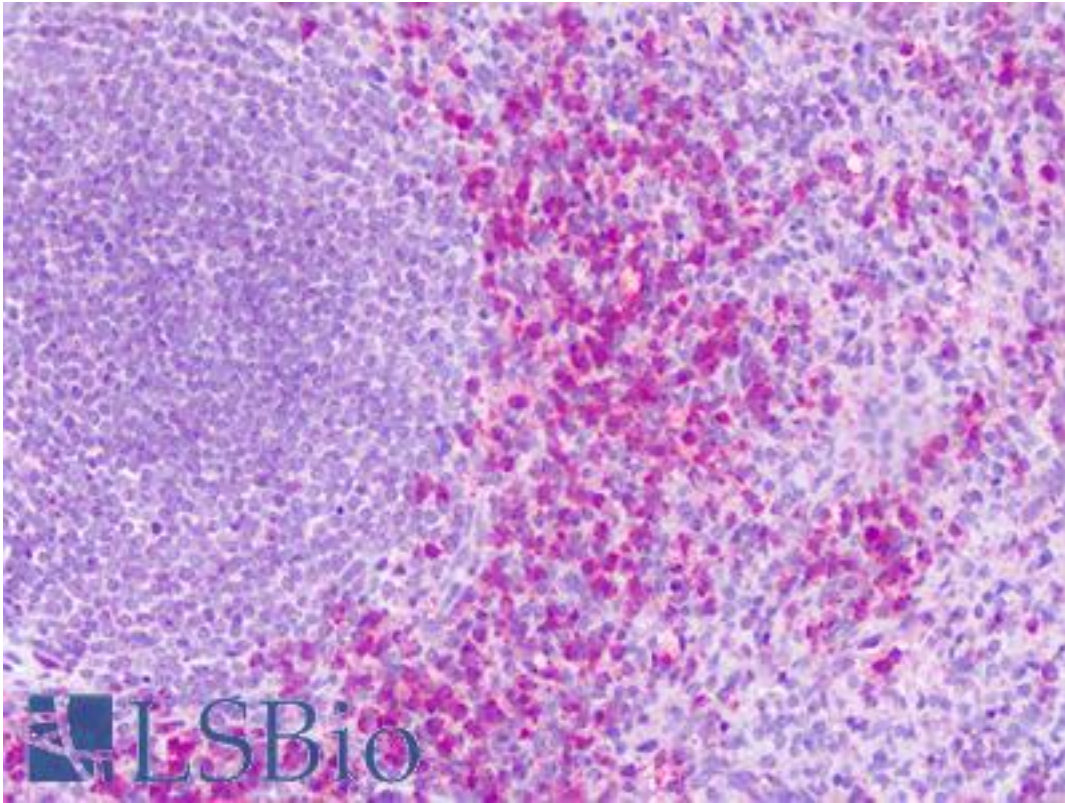
S1PR4 / SIP4 / EDG6 Rabbit anti-Human Polyclonal (Cytoplasmic Domain) Antibody - LS-A71 - LSBio	
<b>CatalogID:</b>	LS-A71
<b>Target:</b>	sphingosine-1-phosphate receptor 4 (S1PR4)
<b>Synonyms:</b>	S1PR4 Antibody, EDG6 Antibody, S1P receptor 4 Antibody, S1P receptor Edg-6 Antibody, S1P(4) receptor Antibody, EDG-6 Antibody, LPC1 Antibody, S1P4 Antibody, SLP4 Antibody
<b>Family / Subfamily:</b>	GPCR / Lysophospholipid/Lysosphingolipid
<b>Host</b>	S1PR4 antibody was produced in Rabbit
<b>Clonality:</b>	Polyclonal
<b>Immunogen Species:</b>	S1PR4 / SIP4 / EDG6 antibody was raised against Human
<b>Antigen Type:</b>	Synthetic peptide
<b>Immunogen:</b>	S1PR4 / SIP4 / EDG6 antibody was raised against synthetic 20 amino acid peptide from 2nd cytoplasmic domain of human S1PR4 / EDG6. Percent identity with other species by BLAST analysis: Human, Gorilla (100%); Monkey, Marmoset, Mouse, Rat, Hamster (95%); Bovine, Pig (85%); Panda, Dog (80%).
<b>Specificity:</b>	Human S1PR4 / EDG6. BLAST analysis of the peptide immunogen showed no homology with other human proteins.
<b>Epitope:</b>	Cytoplasmic Domain
<b>Reactivity:</b>	Human, Gorilla
<b>Predicted Reactivity:</b>	Monkey, Mouse, Rat, Hamster
<b>Purification:</b>	Immunoaffinity purified
<b>Presentation:</b>	PBS, 0.1% sodium azide.
<b>Recommended Storage:</b>	Long term: -70°C; Short term: +4°C
<b>Uses:</b>	IHC - Paraffin (9.6 µg/ml) (Optimal dilution to be determined by the researcher)
<b>Size:</b>	50 µg
<b>Concentration:</b>	1 mg/ml

**Immunohistochemistry Image:**



Anti-S1PR4 / EDG6 antibody IHC of human lymph node. Immunohistochemistry of formalin-fixed, paraffin-embedded tissue after heat-induced antigen retrieval. Antibody LS-A71 dilution 9.6 ug/ml.

**Immunohistochemistry Image:**



Anti-S1PR4 / EDG6 antibody IHC of human spleen. Immunohistochemistry of formalin-fixed, paraffin-embedded tissue after heat-induced antigen retrieval. Antibody LS-A71 dilution 9.6 ug/ml.

**Requested From:**

Japan

Laboratory Reagent For In Vitro Research Use Only

Not for resale without prior written consent from LifeSpan BioSciences, Inc.

Created on 9/23/2014

© 2014 LifeSpan BioSciences