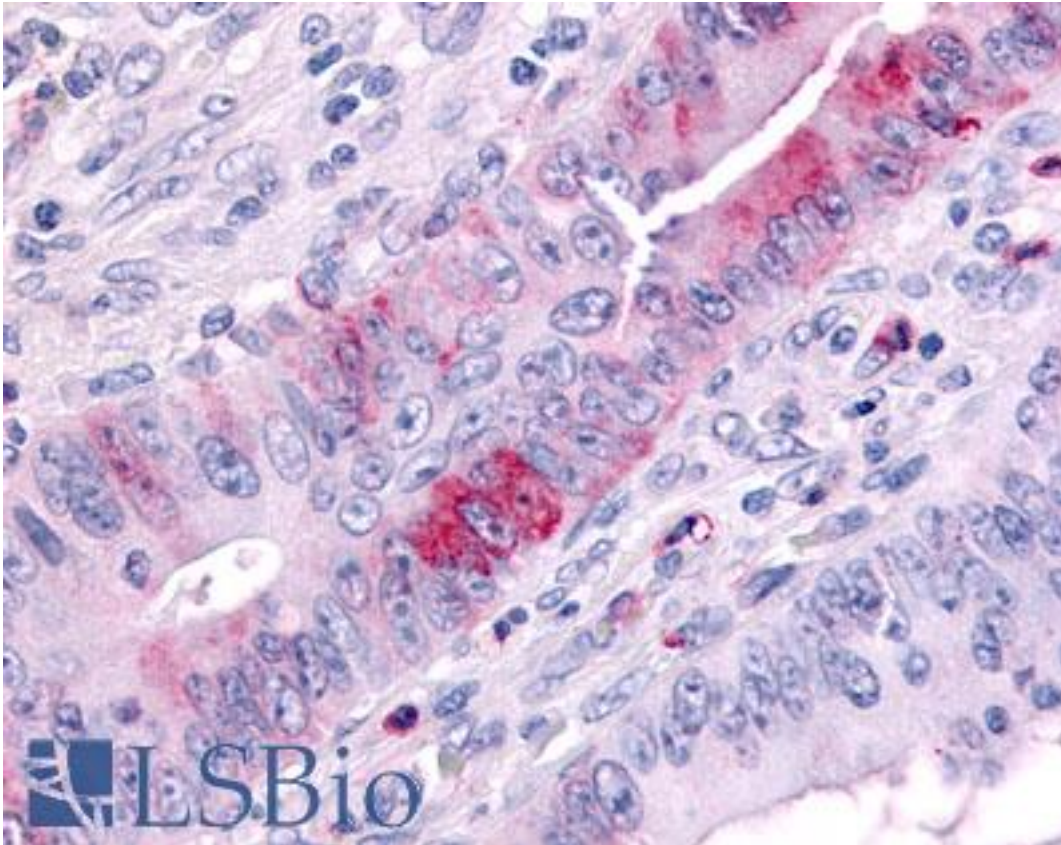


MAP3K9 / MLK1 Rabbit anti-Human Polyclonal (Internal) Antibody - LS-A7092 - LSBio	
CatalogID:	LS-A7092
Target:	mitogen-activated protein kinase kinase kinase 9 (MAP3K9)
Synonyms:	MAP3K9 Antibody, MEKK9 Antibody, MLK1 Antibody, Mixed lineage kinase 1 Antibody, PRKE1 Antibody
Family / Subfamily:	Protein Kinase / MLK(MAP3K)
Host	MAP3K9 antibody was produced in Rabbit
Clonality:	Polyclonal
Immunogen Species:	MAP3K9 / MLK1 antibody was raised against Human
Antigen Type:	Synthetic peptide
Immunogen:	MAP3K9 / MLK1 antibody was raised against synthetic 15 amino acid peptide from internal region of human MAP3K9. Percent identity with other species by BLAST analysis: Human, Gorilla, Gibbon, Monkey, Mouse, Hamster, Rabbit, Pig (100%); Marmoset, Elephant, Panda, Bovine, Dog, Bat, Opossum (93%); Horse, Turkey, Chicken (87%).
Specificity:	Human MAP3K9. BLAST analysis of the peptide immunogen showed no homology with other human proteins.
Epitope:	Internal
Reactivity:	Human, Gorilla, Gibbon, Mouse, Hamster, Pig, Rabbit
Predicted Reactivity:	Monkey, Bat, Bovine, Dog
Purification:	Immunoaffinity purified
Presentation:	PBS, 0.1% sodium azide.
Recommended Storage:	Long term: -70°C; Short term: +4°C
Uses:	IHC - Paraffin (4 µg/ml) (Optimal dilution to be determined by the researcher)
Size:	50 µg
Concentration:	1 mg/ml

Immunohistochemistry Image:



Anti-MAP3K9 antibody LS-A7092 IHC of human colon cancer. Immunohistochemistry of formalin-fixed, paraffin-embedded tissue after heat-induced antigen retrieval.

Requested From:

Japan

Laboratory Reagent For In Vitro Research Use Only

Not for resale without prior written consent from LifeSpan BioSciences, Inc.

Created on 9/23/2014

© 2014 LifeSpan BioSciences