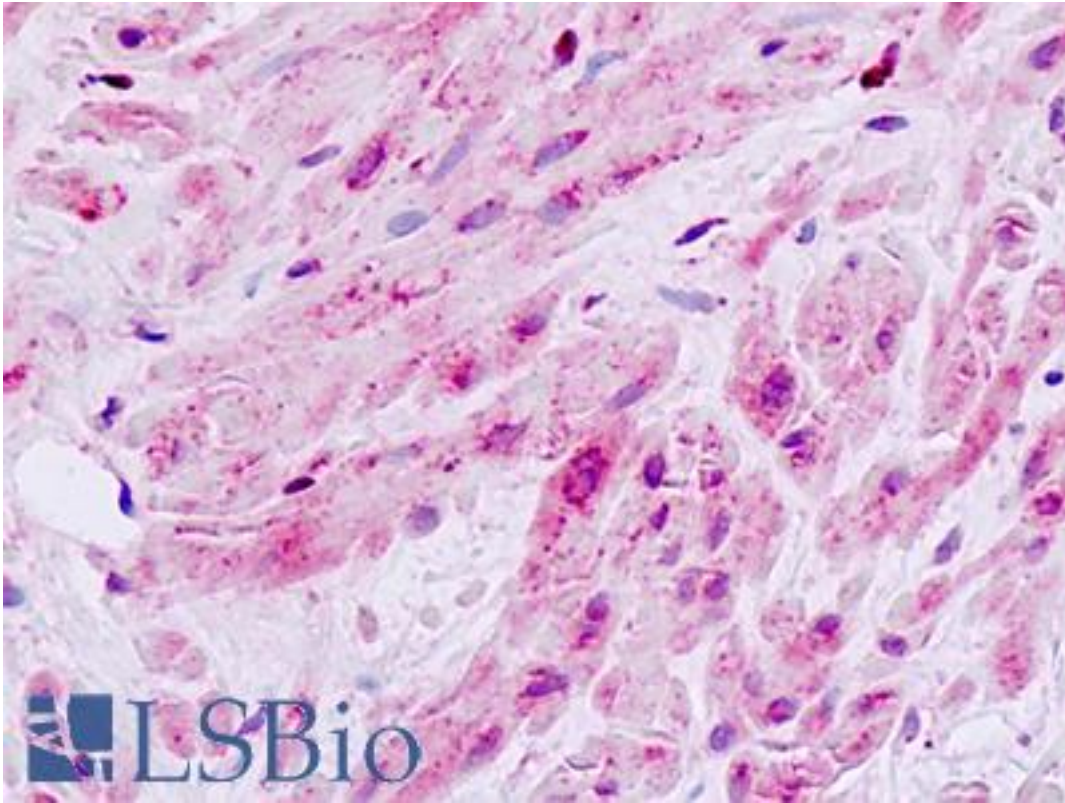


| MAP3K9 / MLK1 Rabbit anti-Human Polyclonal (Internal) Antibody - LS-A7088 - LSBio | |
|---|---|
| CatalogID: | LS-A7088 |
| Target: | mitogen-activated protein kinase kinase kinase 9 (MAP3K9) |
| Synonyms: | MAP3K9 Antibody, MEKK9 Antibody, MLK1 Antibody, Mixed lineage kinase 1 Antibody, PRKE1 Antibody |
| Family / Subfamily: | Protein Kinase / MLK(MAP3K) |
| Host | MAP3K9 antibody was produced in Rabbit |
| Clonality: | Polyclonal |
| Immunogen Species: | MAP3K9 / MLK1 antibody was raised against Human |
| Antigen Type: | Synthetic peptide |
| Immunogen: | MAP3K9 / MLK1 antibody was raised against synthetic 18 amino acid peptide from internal region of human MAP3K9. Percent identity with other species by BLAST analysis: Human, Gorilla, Gibbon, Monkey, Marmoset, Mouse, Panda, Dog, Horse, Rabbit (100%); Hamster, Elephant, Bovine, Bat, Pig (94%); Opossum (83%). |
| Specificity: | Human MAP3K9. BLAST analysis of the peptide immunogen showed no homology with other human proteins. |
| Epitope: | Internal |
| Reactivity: | Human, Gorilla, Gibbon, Monkey, Mouse, Dog, Horse, Rabbit |
| Predicted Reactivity: | Bat, Bovine, Hamster, Pig |
| Purification: | Immunoaffinity purified |
| Presentation: | PBS, 0.1% sodium azide. |
| Recommended Storage: | Long term: -70°C; Short term: +4°C |
| Uses: | IHC - Paraffin (7 - 10 µg/ml) (Optimal dilution to be determined by the researcher) |
| Size: | 50 µg |
| Concentration: | 1 mg/ml |

Immunohistochemistry Image:



Human, Prostate, smooth muscle: Formalin-Fixed Paraffin-Embedded (FFPE)

Requested From:

Japan

Laboratory Reagent For In Vitro Research Use Only

Not for resale without prior written consent from LifeSpan BioSciences, Inc.

Created on 8/21/2014

© 2014 LifeSpan BioSciences