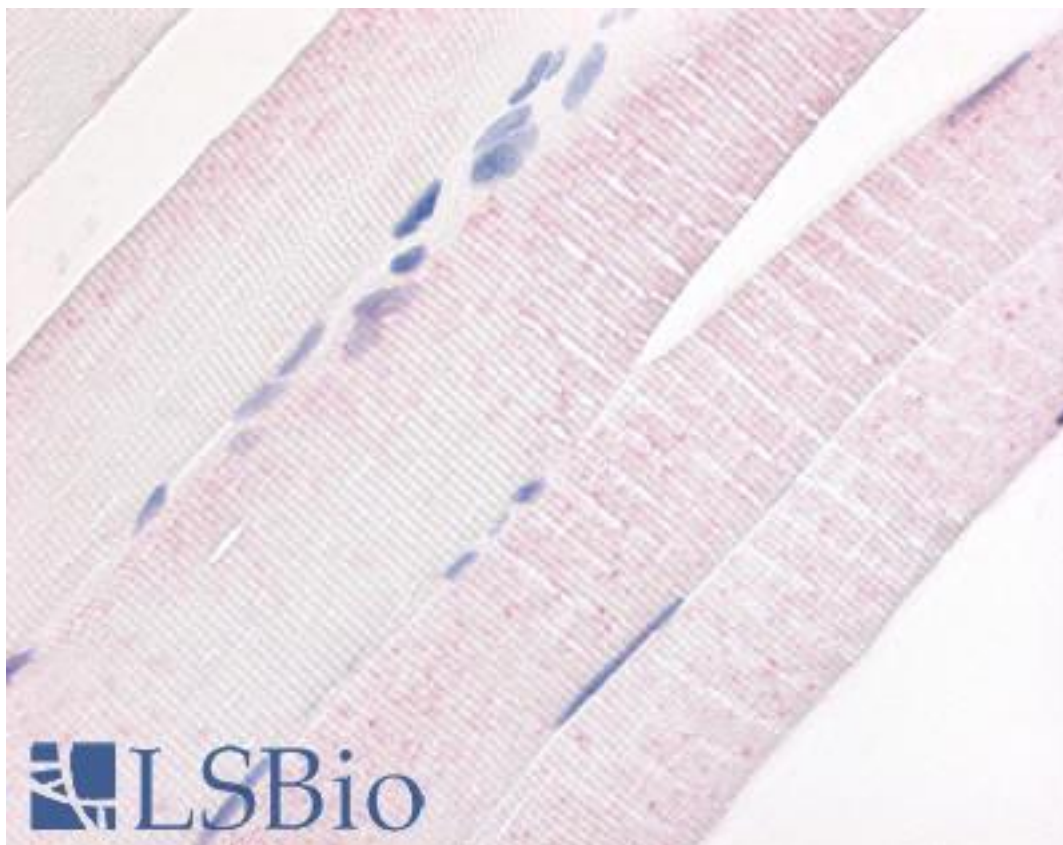


**PDE7A Rabbit anti-Human Polyclonal (N-Terminus) Antibody - LS-A703 - LSBio**

<b>CatalogID:</b>	LS-A703
<b>Target:</b>	phosphodiesterase 7A (PDE7A)
<b>Synonyms:</b>	PDE7A Antibody, PDE7A1 Antibody, PDE7A2 Antibody, Phosphodiesterase 7A Antibody, Phosphodiesterase isozyme 7 Antibody, PDE7 Antibody, HCP1 Antibody, TM22 Antibody
<b>Family / Subfamily:</b>	Phosphodiesterase / PDE - cAMP-specific
<b>Host</b>	PDE7A antibody was produced in Rabbit
<b>Clonality:</b>	Polyclonal
<b>Immunogen Species:</b>	PDE7A antibody was raised against Human
<b>Antigen Type:</b>	Synthetic peptide
<b>Immunogen:</b>	PDE7A antibody was raised against synthetic 17 amino acid peptide from N-terminus of human PDE7A. Percent identity with other species by BLAST analysis: Human, Gorilla, Orangutan, Gibbon, Monkey, Marmoset, Bovine, Dog, Bat, Elephant, Panda, Rabbit, Opossum, Xenopus (100%); Mouse, Rat, Hamster, Turkey, Lizard (94%); Zebrafish (82%).
<b>Specificity:</b>	Human PDE7A. BLAST analysis of the peptide immunogen showed no homology with other human proteins.
<b>Epitope:</b>	N-Terminus
<b>Reactivity:</b>	Human, Gorilla, Orangutan, Gibbon, Monkey, Bat, Bovine, Dog, Rabbit, Xenopus
<b>Predicted Reactivity:</b>	Mouse, Rat, Hamster
<b>Purification:</b>	Immunoaffinity purified
<b>Presentation:</b>	PBS, 0.1% sodium azide.
<b>Recommended Storage:</b>	Long term: -70°C; Short term: +4°C
<b>Usage Summary:</b>	Immunohistochemistry: LS-A703 was validated for use in immunohistochemistry on a panel of 21 formalin-fixed, paraffin-embedded (FFPE) human tissues after heat induced antigen retrieval in pH 6.0 citrate buffer. After incubation with the primary antibody, slides were incubated with biotinylated secondary antibody, followed by alkaline phosphatase-streptavidin and chromogen. The stained slides were evaluated by a pathologist to confirm staining specificity. The optimal working concentration for LS-A703 was determined to be 20 ug/ml.
<b>Uses:</b>	IHC - Paraffin (20 µg/ml) (Optimal dilution to be determined by the researcher)
<b>Size:</b>	50 µg
<b>Concentration:</b>	0.4 mg/ml

**Immunohistochemistry Image:**



Anti-PDE7A antibody LS-A703 IHC of human skeletal muscle. Immunohistochemistry of formalin-fixed, paraffin-embedded tissue after heat-induced antigen retrieval.

**Requested From:**

Japan

Laboratory Reagent For In Vitro Research Use Only

Not for resale without prior written consent from LifeSpan BioSciences, Inc.

Created on 8/21/2014

© 2014 LifeSpan BioSciences