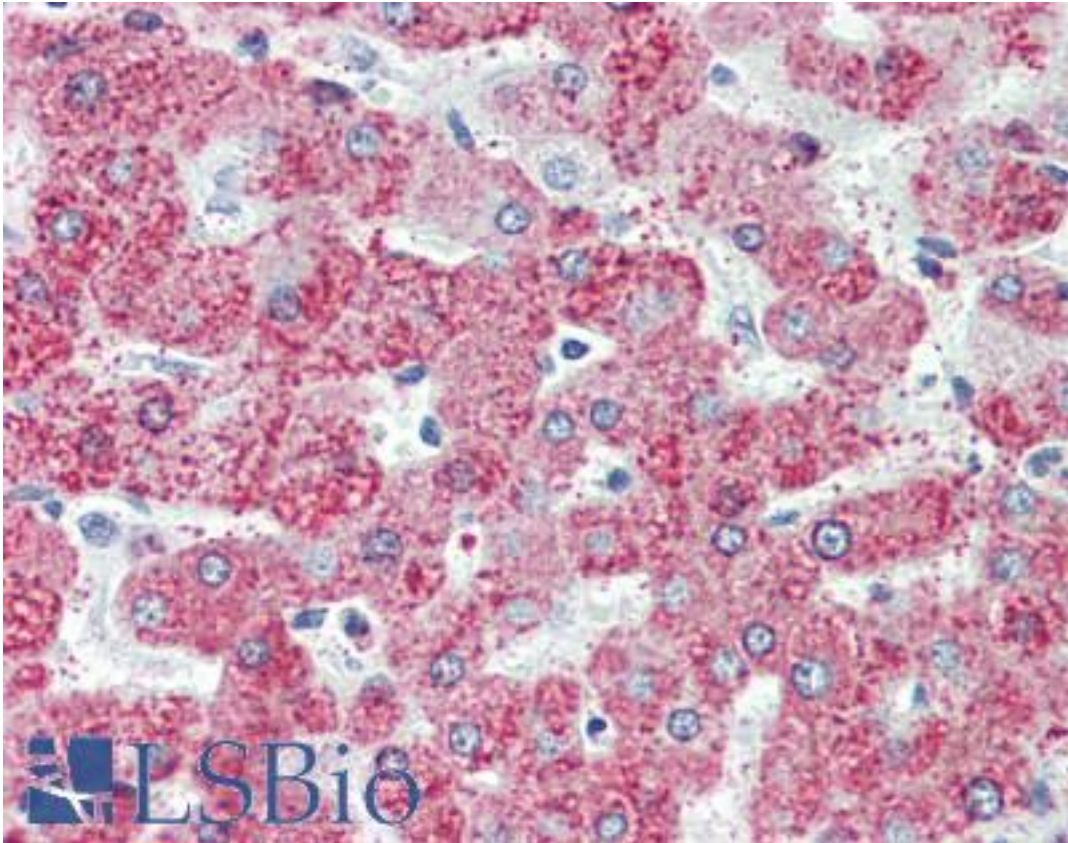


TAOK1 / TAO1 Rabbit anti-Human Polyclonal (C-Terminus) Antibody - LS-A7008 - LSBio

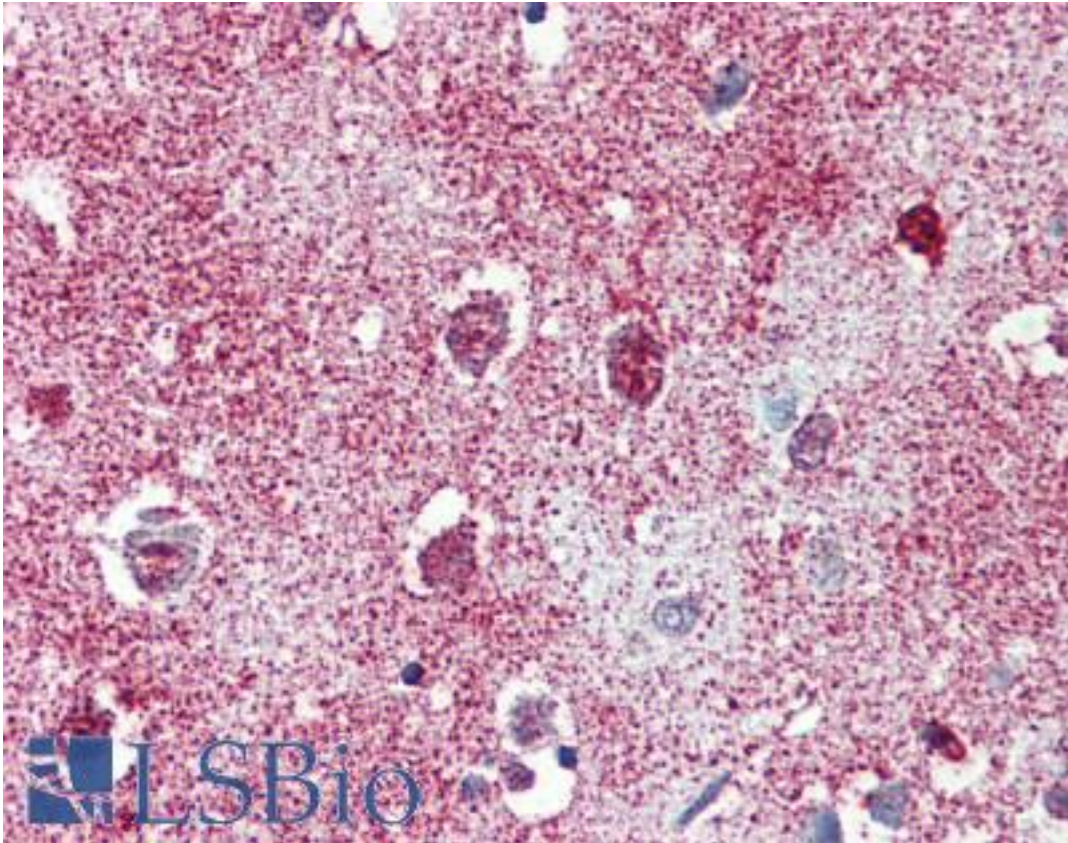
<b>CatalogID:</b>	LS-A7008
<b>Target:</b>	TAO kinase 1 (TAOK1)
<b>Synonyms:</b>	TAOK1 Antibody, MAP3K16 Antibody, MARK Kinase Antibody, HKFC-B Antibody, KFC-B Antibody, TAO kinase 1 Antibody, TAO1 Antibody, MARKK Antibody, PSK2 Antibody, HTAOK1 Antibody, KIAA1361 Antibody, Kinase from chicken homolog B Antibody, PSK-2 Antibody, Rat TAO1 Antibody, STE20-like kinase PSK2 Antibody, Sulu3 Antibody
<b>Family / Subfamily:</b>	Protein Kinase / TAO
<b>Host</b>	TAOK1 antibody was produced in Rabbit
<b>Clonality:</b>	Polyclonal
<b>Immunogen Species:</b>	TAOK1 / TAO1 antibody was raised against Human
<b>Antigen Type:</b>	Synthetic peptide
<b>Immunogen:</b>	TAOK1 / TAO1 antibody was raised against synthetic 17 amino acid peptide from C-Terminus of human TAOK1. Percent identity with other species by BLAST analysis: Human, Gorilla, Gibbon, Monkey, Marmoset, Mouse, Rat, Bovine, Dog, Bat, Hamster, Elephant, Panda, Horse, Rabbit, Pig, Opossum, Turkey, Chicken, Platypus, Xenopus (100%); Zebrafish (88%).
<b>Specificity:</b>	Human TAOK1. BLAST analysis of the peptide immunogen showed no homology with other human proteins.
<b>Epitope:</b>	C-Terminus
<b>Reactivity:</b>	Human, Gorilla, Gibbon, Monkey, Mouse, Rat, Bat, Bovine, Dog, Hamster, Horse, Pig, Rabbit, Chicken, Xenopus
<b>Purification:</b>	Immunoaffinity purified
<b>Presentation:</b>	PBS, 0.1% sodium azide.
<b>Recommended Storage:</b>	Long term: -70°C; Short term: +4°C
<b>Usage Summary:</b>	Immunohistochemistry with formalin-fixed paraffin-embedded tissues requires pretreatment with Proteinase K.
<b>Uses:</b>	IHC - Paraffin (5 µg/ml), ELISA (Optimal dilution to be determined by the researcher)
<b>Size:</b>	50 µg
<b>Concentration:</b>	1 mg/ml

**Immunohistochemistry Image:**



Anti-TAOK1 antibody LS-A7008 IHC of human liver. Immunohistochemistry of formalin-fixed, paraffin-embedded tissue after heat-induced antigen retrieval.

**Immunohistochemistry Image:**



Anti-TAOK1 antibody LS-A7008 IHC of human brain, cortex. Immunohistochemistry of formalin-fixed, paraffin-embedded tissue after heat-induced antigen retrieval.

**Requested From:**

Japan

Laboratory Reagent For In Vitro Research Use Only

Not for resale without prior written consent from LifeSpan BioSciences, Inc.

Created on 8/21/2014

© 2014 LifeSpan BioSciences