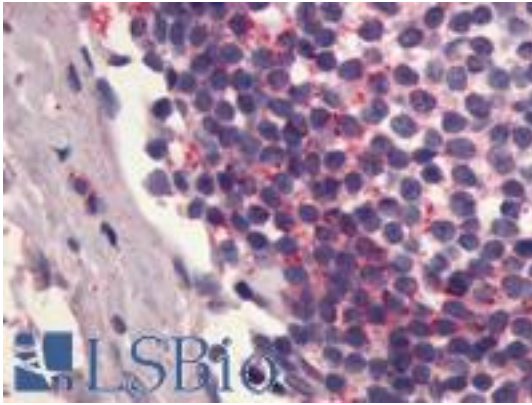


S1PR4 / SIP4 / EDG6 Rabbit anti-Human Polyclonal (C-Terminus) Antibody - LS-A70 - LSBio	
CatalogID:	LS-A70
Target:	sphingosine-1-phosphate receptor 4 (S1PR4)
Synonyms:	S1PR4 Antibody, EDG6 Antibody, S1P receptor 4 Antibody, S1P receptor Edg-6 Antibody, S1P(4) receptor Antibody, EDG-6 Antibody, LPC1 Antibody, S1P4 Antibody, SLP4 Antibody
Family / Subfamily:	GPCR / Lysophospholipid/Lysosphingolipid
Host	S1PR4 antibody was produced in Rabbit
Clonality:	Polyclonal
Immunogen Species:	S1PR4 / SIP4 / EDG6 antibody was raised against Human
Antigen Type:	Synthetic peptide
Immunogen:	S1PR4 / SIP4 / EDG6 antibody was raised against synthetic 17 amino acid peptide from C-terminus of human S1PR4 / EDG6. Percent identity with other species by BLAST analysis: Human, Gorilla, Monkey, Elephant, Panda, Dog, Pig (100%); Mouse, Bovine (94%); Rat, Opossum (88%); Hamster (82%).
Specificity:	Human S1PR4 / EDG6. BLAST analysis of the peptide immunogen showed no homology with other human proteins, except C1orf65 (65%).
Epitope:	C-Terminus
Reactivity:	Human, Gorilla, Monkey, Dog, Pig
Predicted Reactivity:	Mouse, Bovine
Purification:	Immunoaffinity purified
Presentation:	PBS, 0.1% sodium azide.
Recommended Storage:	Long term: -70°C; Short term: +4°C
Uses:	IHC - Paraffin (8 - 19 µg/ml) (Optimal dilution to be determined by the researcher)
Size:	50 µg
Concentration:	1 mg/ml

Immunohistochemistry Image:



Anti-S1PR4 / EDG6 antibody LS-A70 IHC of human lymph node. Immunohistochemistry of formalin-fixed, paraffin-embedded tissue after heat-induced antigen retrieval.

Requested From:

Japan

Laboratory Reagent For In Vitro Research Use Only

Not for resale without prior written consent from LifeSpan BioSciences, Inc.

Created on 8/21/2014

© 2014 LifeSpan BioSciences