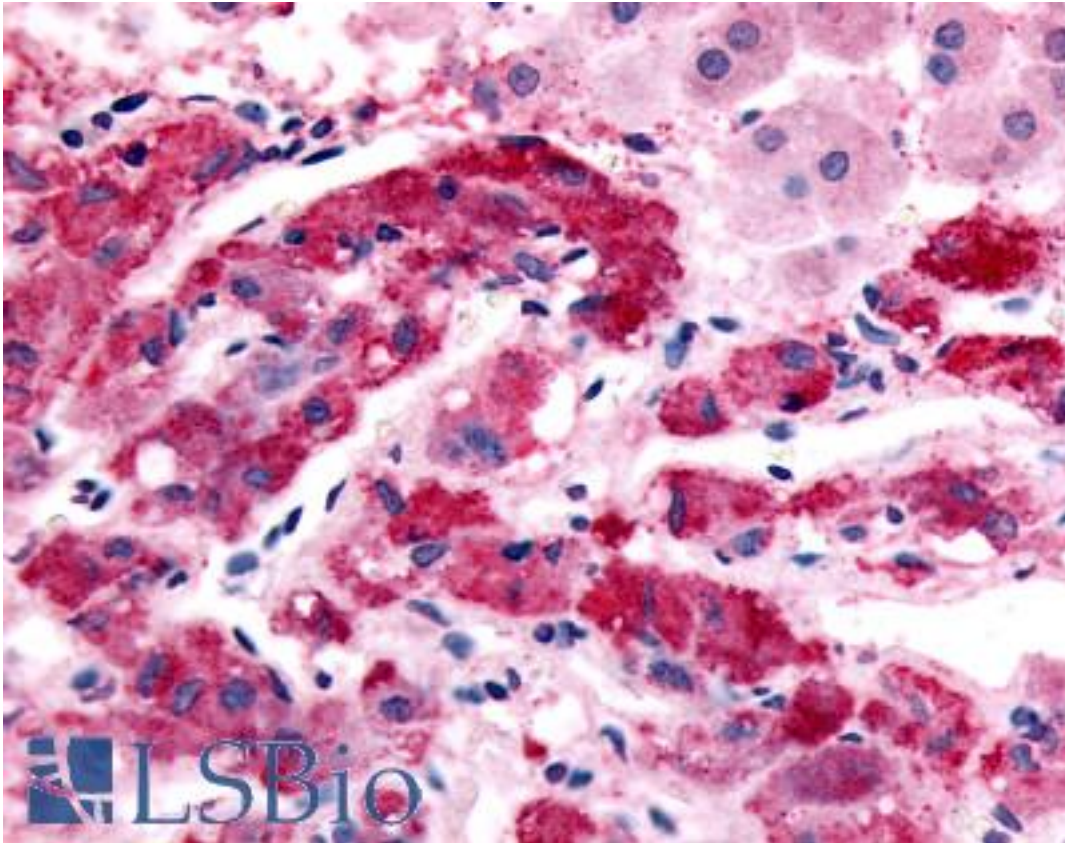


ADRA1B Rabbit anti-Human Polyclonal (C-Terminus) Antibody - LS-A697 - LSBio

CatalogID:	LS-A697
Target:	adrenoceptor alpha 1B (ADRA1B)
Synonyms:	ADRA1B Antibody, Alpha 1b Antibody, Alpha-1B adrenergic receptor Antibody, Alpha-1b-adrenergic Antibody, Alpha-1B-adrenergic receptor Antibody, Alpha1b Antibody, Adrenoceptor alpha 1B Antibody, Alpha-1B adrenoreceptor Antibody, Alpha1B-AR Antibody, Alpha1beta-AR Antibody, ALPHA1BAR Antibody, ADRA1 Antibody, Alpha-1B adrenoceptor Antibody, Alpha1b-adrenergic Antibody
Family / Subfamily:	GPCR / Adrenergic
Host	ADRA1B antibody was produced in Rabbit
Clonality:	Polyclonal
Immunogen Species:	ADRA1B antibody was raised against Human
Antigen Type:	Synthetic peptide
Immunogen:	ADRA1B antibody was raised against synthetic 20 amino acid peptide from C-terminus of human ADRA1B. Percent identity with other species by BLAST analysis: Human, Gorilla, Monkey, Marmoset, Mouse, Rat, Hamster, Bovine, Dog (100%); Elephant (90%); Bat (85%); Opossum, Platypus (80%).
Specificity:	Human ADRA1B. BLAST analysis of the peptide immunogen showed no homology with other human proteins, except PLEKHG5 (45%).
Epitope:	C-Terminus
Reactivity:	Human, Gorilla, Monkey, Mouse, Rat, Bovine, Dog, Hamster
Purification:	Immunoaffinity purified
Presentation:	PBS, 0.1% sodium azide.
Recommended Storage:	Long term: -70°C; Short term: +4°C
Uses:	IHC - Paraffin (11 µg/ml) (Optimal dilution to be determined by the researcher)
Size:	50 µg
Concentration:	1 mg/ml

Immunohistochemistry Image:



Anti-ADRA1B antibody LS-A697 IHC of human adrenal, medulla. Immunohistochemistry of formalin-fixed, paraffin-embedded tissue after heat-induced antigen retrieval.

Requested From:

Japan

Laboratory Reagent For In Vitro Research Use Only

Not for resale without prior written consent from LifeSpan BioSciences, Inc.

Created on 8/21/2014

© 2014 LifeSpan BioSciences