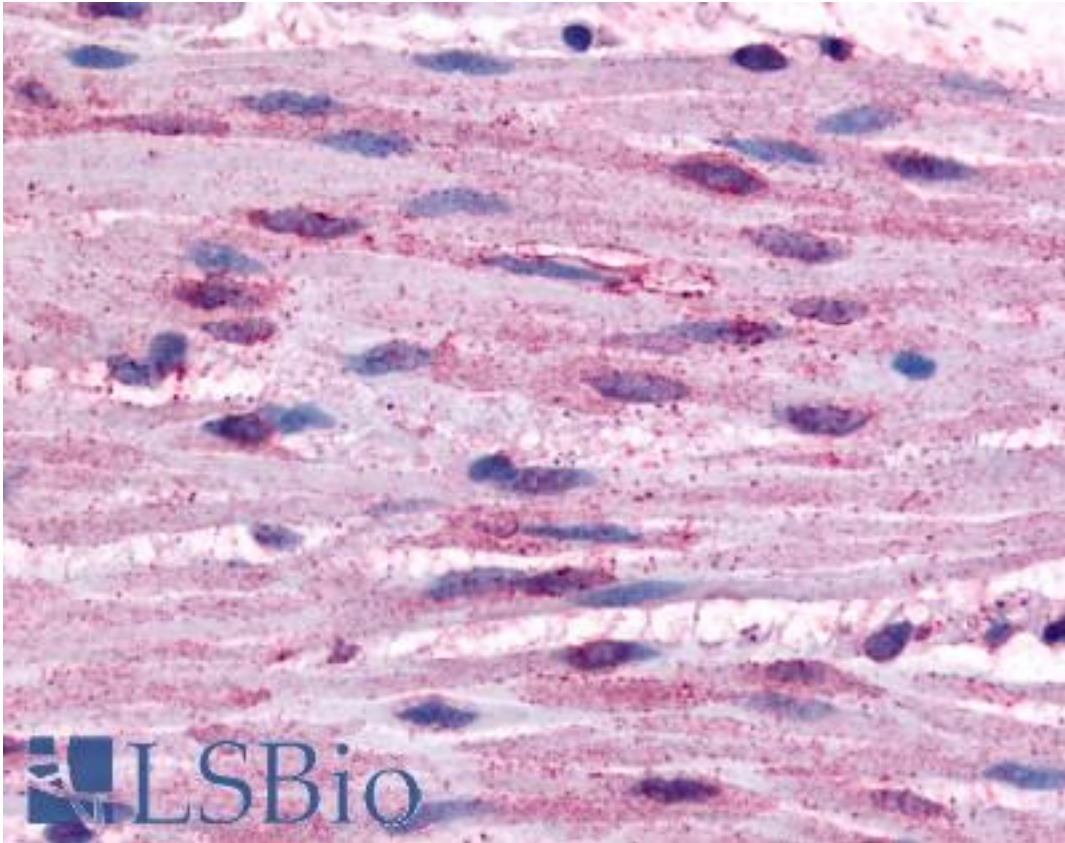


ADRA1B Rabbit anti-Human Polyclonal (Cytoplasmic Domain) Antibody - LS-A696 - LSBio	
CatalogID:	LS-A696
Target:	adrenoceptor alpha 1B (ADRA1B)
Synonyms:	ADRA1B Antibody, Alpha 1b Antibody, Alpha-1B adrenergic receptor Antibody, Alpha-1b-adrenergic Antibody, Alpha-1B-adrenergic receptor Antibody, Alpha1b Antibody, Adrenoceptor alpha 1B Antibody, Alpha-1B adrenoreceptor Antibody, Alpha1B-AR Antibody, Alpha1beta-AR Antibody, ALPHA1BAR Antibody, ADRA1 Antibody, Alpha-1B adrenoceptor Antibody, Alpha1b-adrenergic Antibody
Family / Subfamily:	GPCR / Adrenergic
Host	ADRA1B antibody was produced in Rabbit
Clonality:	Polyclonal
Immunogen Species:	ADRA1B antibody was raised against Human
Antigen Type:	Synthetic peptide
Immunogen:	ADRA1B antibody was raised against synthetic 16 amino acid peptide from 3rd cytoplasmic domain of human ADRA1B. Percent identity with other species by BLAST analysis: Human, Gorilla, Gibbon, Monkey, Marmoset, Mouse, Rat, Bovine, Dog, Hamster, Elephant, Panda, Horse, Pig, Opossum (100%); Bat (94%); Turkey, Chicken (88%); Platypus (81%).
Specificity:	Human ADRA1B. BLAST analysis of the peptide immunogen showed no homology with other human proteins.
Epitope:	Cytoplasmic Domain
Reactivity:	Human, Gorilla, Gibbon, Monkey, Mouse, Rat, Bovine, Dog, Hamster, Horse, Pig
Predicted Reactivity:	Bat
Purification:	Immunoaffinity purified
Presentation:	PBS, 0.1% sodium azide.
Recommended Storage:	Long term: -70°C; Short term: +4°C
Usage Summary:	Immunohistochemistry: LS-A696 was validated for use in immunohistochemistry on a panel of 21 formalin-fixed, paraffin-embedded (FFPE) human tissues after heat induced antigen retrieval in pH 6.0 citrate buffer. After incubation with the primary antibody, slides were incubated with biotinylated secondary antibody, followed by alkaline phosphatase-streptavidin and chromogen. The stained slides were evaluated by a pathologist to confirm staining specificity. The optimal working concentration for LS-A696 was determined to be 10 µg/ml.
Uses:	IHC - Paraffin (10 µg/ml), ELISA (Optimal dilution to be determined by the researcher)
Size:	50 µg
Concentration:	1 mg/ml

Immunohistochemistry Image:



Anti-ADRA1B antibody LS-A696 IHC of human smooth muscle cells. Immunohistochemistry of formalin-fixed, paraffin-embedded tissue after heat-induced antigen retrieval.

Requested From:

Japan

Laboratory Reagent For In Vitro Research Use Only

Not for resale without prior written consent from LifeSpan BioSciences, Inc.

Created on 8/21/2014

© 2014 LifeSpan BioSciences