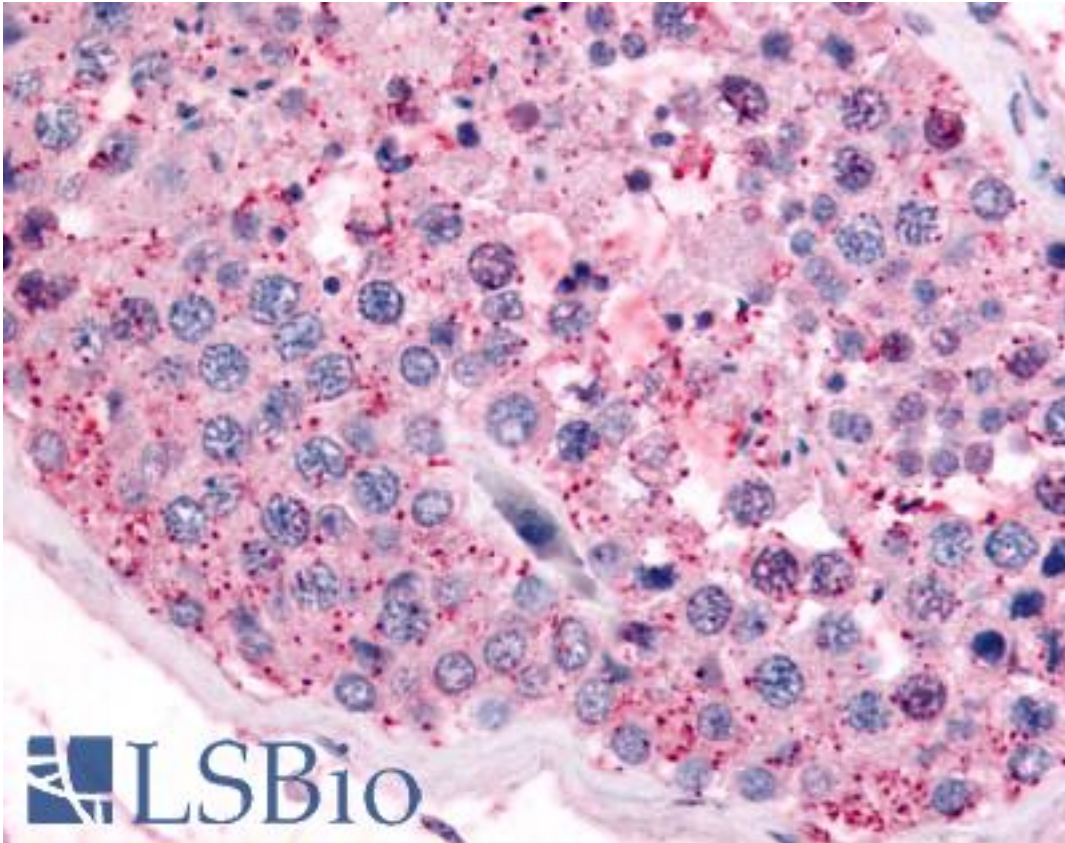


PAK6 Rabbit anti-Human Polyclonal (N-Terminus) Antibody - LS-A6949 - LSBio

CatalogID:	LS-A6949
Target:	p21 protein (Cdc42/Rac)-activated kinase 6 (PAK6)
Synonyms:	PAK6 Antibody, PAK5 Antibody, p21-activated kinase 6 Antibody, p21-activated protein kinase 6 Antibody, PAK-5 Antibody, PAK-6 Antibody, p21(CDKN1A)-activated kinase 6 Antibody
Family / Subfamily:	Protein Kinase / PAK (STE20)
Host	PAK6 antibody was produced in Rabbit
Clonality:	Polyclonal
Immunogen Species:	PAK6 antibody was raised against Human
Antigen Type:	Synthetic peptide
Immunogen:	PAK6 antibody was raised against synthetic 16 amino acid peptide from N-terminus of human PAK6. Percent identity with other species by BLAST analysis: Human, Gorilla, Orangutan, Gibbon, Monkey, Marmoset, Mouse, Rat, Bovine, Dog, Bat, Elephant, Panda, Horse, Rabbit, Sparrow, Chicken, Platypus (100%); Xenopus (94%); Goat (88%).
Specificity:	Human PAK6. BLAST analysis of the peptide immunogen showed no homology with other human proteins, except PAK7 (69%).
Epitope:	N-Terminus
Reactivity:	Human, Gorilla, Orangutan, Gibbon, Monkey, Mouse, Rat, Bat, Bovine, Dog, Horse, Rabbit, Chicken
Predicted Reactivity:	Xenopus
Purification:	Immunoaffinity purified
Presentation:	PBS, 0.1% sodium azide.
Recommended Storage:	Long term: -70°C; Short term: +4°C
Usage Summary:	Immunohistochemistry: LS-A6949 was validated for use in immunohistochemistry on a panel of 21 formalin-fixed, paraffin-embedded (FFPE) human tissues after heat induced antigen retrieval in pH 6.0 citrate buffer. After incubation with the primary antibody, slides were incubated with biotinylated secondary antibody, followed by alkaline phosphatase-streptavidin and chromogen. The stained slides were evaluated by a pathologist to confirm staining specificity. The optimal working concentration for LS-A6949 was determined to be 10 ug/ml.
Uses:	IHC - Paraffin (10 µg/ml), ELISA (Optimal dilution to be determined by the researcher)
Size:	50 µg
Concentration:	1 mg/ml

Immunohistochemistry Image:



Anti-PAK6 antibody LS-A6949 IHC of human testis. Immunohistochemistry of formalin-fixed, paraffin-embedded tissue after heat-induced antigen retrieval.

Requested From:

Japan

Laboratory Reagent For In Vitro Research Use Only

Not for resale without prior written consent from LifeSpan BioSciences, Inc.

Created on 9/23/2014

© 2014 LifeSpan BioSciences