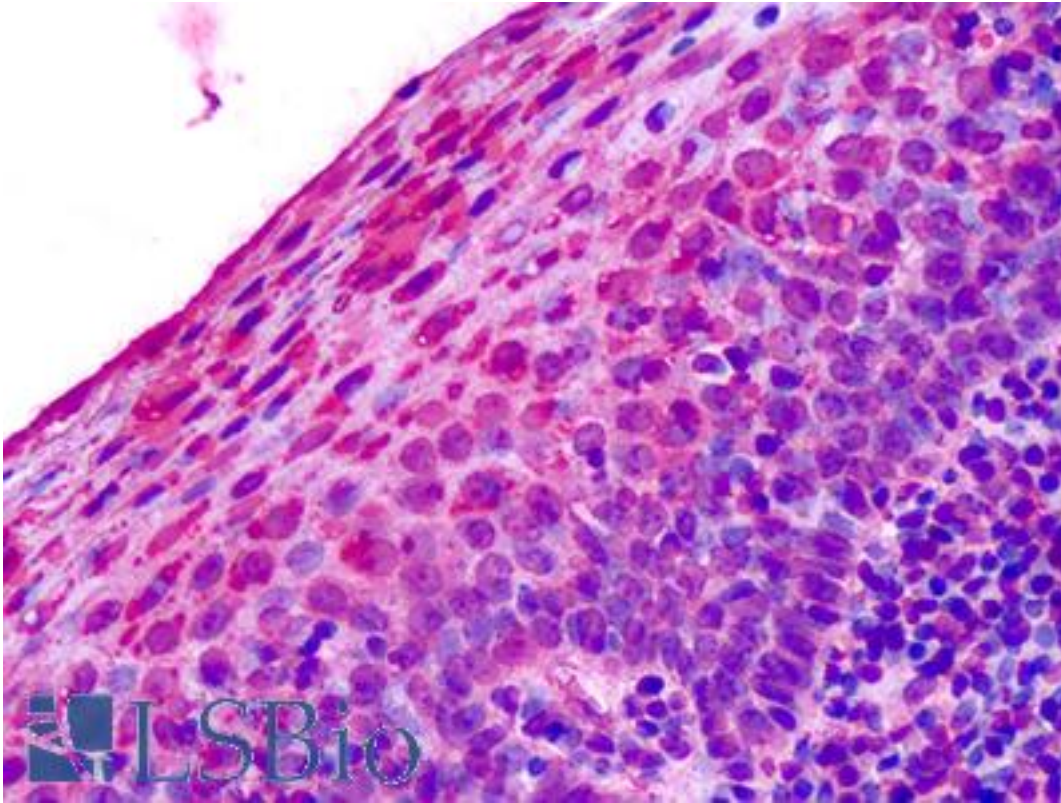


ADORA3 / Adenosine A3 Receptor Rabbit anti-Human Polyclonal (Cytoplasmic Domain) Antibody - LS-A689 - LSBio	
<b>CatalogID:</b>	LS-A689
<b>Target:</b>	adenosine A3 receptor (ADORA3)
<b>Synonyms:</b>	ADORA3 Antibody, A3AR Antibody, AD026 Antibody, Adenosine A3 receptor Antibody, BA552M11.5 Antibody, A3 adenosine receptor Antibody, Adenosine receptor A3 Antibody, RP11-552M11.7 Antibody
<b>Family / Subfamily:</b>	GPCR / Adenosine
<b>Host</b>	ADORA3 antibody was produced in Rabbit
<b>Clonality:</b>	Polyclonal
<b>Immunogen Species:</b>	ADORA3 / Adenosine A3 Receptor antibody was raised against Human
<b>Antigen Type:</b>	Synthetic peptide
<b>Immunogen:</b>	ADORA3 / Adenosine A3 Receptor antibody was raised against synthetic 16 amino acid peptide from 3rd cytoplasmic domain of human ADORA3. Percent identity with other species by BLAST analysis: Human, Monkey, Marmoset, Dolphin, Elephant, Dog, Horse, Pig, Opossum (100%).
<b>Specificity:</b>	Human ADORA3. BLAST analysis of the peptide immunogen showed no homology with other human proteins.
<b>Epitope:</b>	Cytoplasmic Domain
<b>Reactivity:</b>	Human, Monkey, Dog, Horse, Pig
<b>Purification:</b>	Immunoaffinity purified
<b>Presentation:</b>	PBS, 0.1% sodium azide.
<b>Recommended Storage:</b>	Long term: -70°C; Short term: +4°C
<b>Uses:</b>	IHC - Paraffin (20 - 30 µg/ml) (Optimal dilution to be determined by the researcher)
<b>Size:</b>	50 µg
<b>Concentration:</b>	1 mg/ml

**Immunohistochemistry Image:**



Anti-Adenosine A3 Receptor / ADORA3 antibody IHC of human tonsil, squamous epithelium. Immunohistochemistry of formalin-fixed, paraffin-embedded tissue after heat-induced antigen retrieval. Antibody LS-A689 dilution 20-30 ug/ml.

**Requested From:**

Japan

Laboratory Reagent For In Vitro Research Use Only

Not for resale without prior written consent from LifeSpan BioSciences, Inc.

Created on 9/23/2014

© 2014 LifeSpan BioSciences