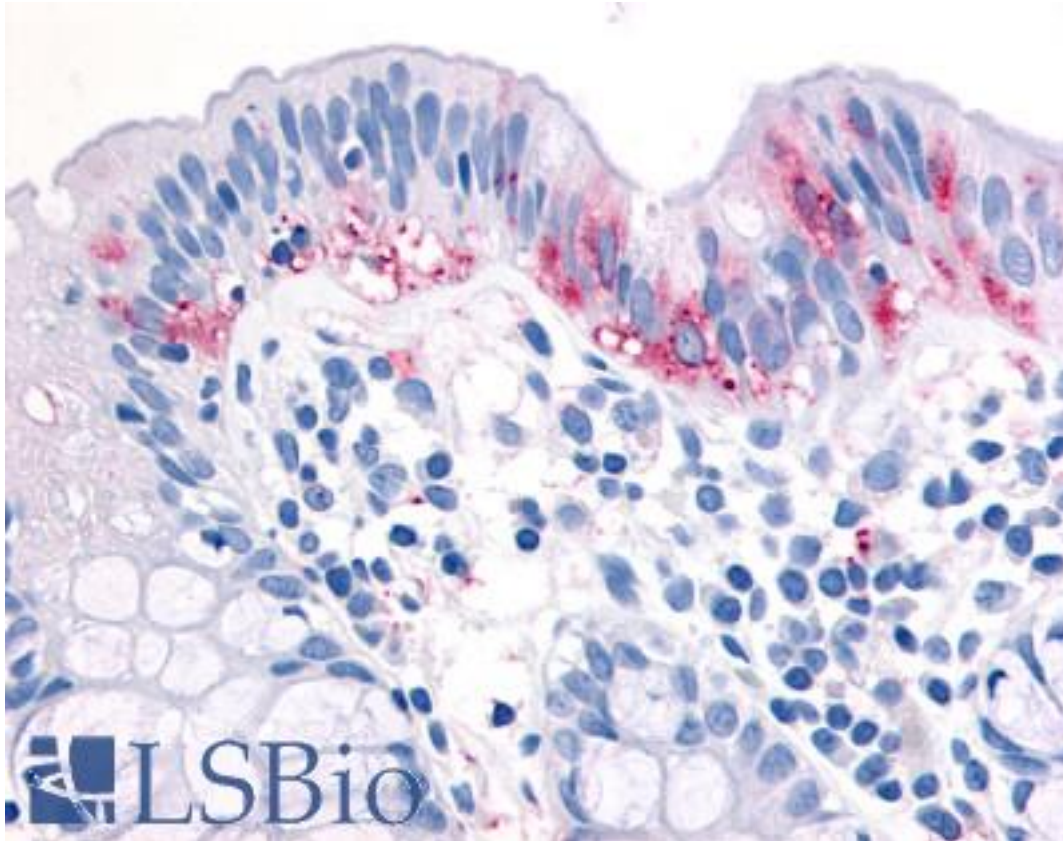


MAP3K8 / TPL2 Rabbit anti-Human Polyclonal (C-Terminus) Antibody - LS-A6858 - LSBio	
CatalogID:	LS-A6858
Target:	mitogen-activated protein kinase kinase kinase 8 (MAP3K8)
Synonyms:	MAP3K8 Antibody, C-COT Antibody, Cancer Osaka thyroid oncogene Antibody, COT Antibody, Ewing sarcoma transformant Antibody, EST Antibody, MEKK8 Antibody, Proto-oncogene c-Cot Antibody, TPL2 Antibody, Tumor progression locus 2 Antibody, Protein kinase cot Antibody, Tpl-2 Antibody, ESTF Antibody
Family / Subfamily:	Protein Kinase / MAP3K
Host	MAP3K8 antibody was produced in Rabbit
Clonality:	Polyclonal
Immunogen Species:	MAP3K8 / TPL2 antibody was raised against Human
Antigen Type:	Synthetic peptide
Immunogen:	MAP3K8 / TPL2 antibody was raised against synthetic 18 amino acid peptide from near C-terminus of human MAP3K8. Percent identity with other species by BLAST analysis: Human, Gorilla, Gibbon, Marmoset, Elephant, Bovine, Dog, Bat (100%); Mouse, Rat, Hamster, Panda, Horse (94%).
Specificity:	Human MAP3K8. BLAST analysis of the peptide immunogen showed no homology with other human proteins.
Epitope:	C-Terminus
Reactivity:	Human, Gorilla, Gibbon, Monkey, Bat, Bovine, Dog
Predicted Reactivity:	Mouse, Rat, Hamster, Horse
Purification:	Immunoaffinity purified
Presentation:	PBS, 0.1% sodium azide.
Recommended Storage:	Long term: -70°C; Short term: +4°C
Uses:	IHC - Paraffin (10 µg/ml) (Optimal dilution to be determined by the researcher)
Size:	50 µg
Concentration:	1 mg/ml

Immunohistochemistry Image:



Anti-MAP3K8 antibody LS-A6858 IHC of human colon. Immunohistochemistry of formalin-fixed, paraffin-embedded tissue after heat-induced antigen retrieval.

Requested From:

Japan

Laboratory Reagent For In Vitro Research Use Only

Not for resale without prior written consent from LifeSpan BioSciences, Inc.

Created on 9/23/2014

© 2014 LifeSpan BioSciences