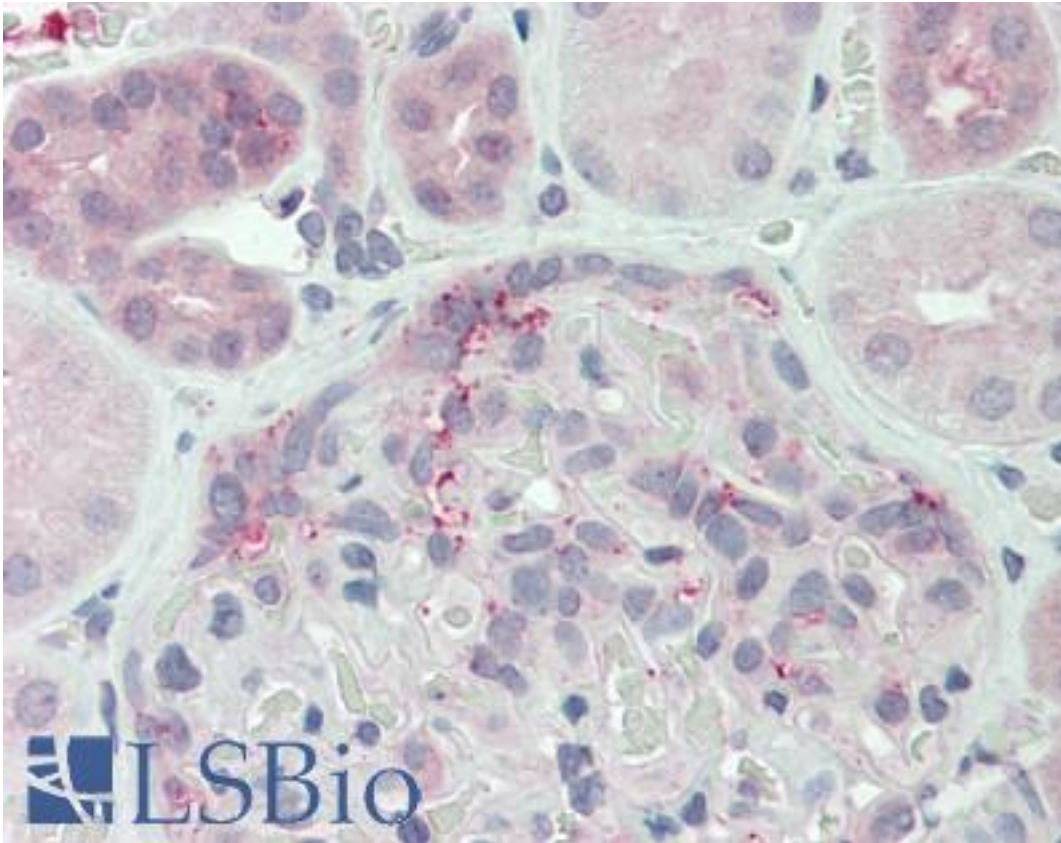


DUSP22 / JSP 1 Rabbit anti-Human Polyclonal (N-Terminus) Antibody - LS-A6809 - LSBio	
CatalogID:	LS-A6809
Target:	dual specificity phosphatase 22 (DUSP22)
Synonyms:	DUSP22 Antibody, JSP 1 Antibody, JKAP Antibody, JNK-stimulating phosphatase 1 Antibody, LMW-DSP2 Antibody, Map kinase phosphatase x Antibody, MKPX Antibody, VHX Antibody, JNK-stimulatory phosphatase-1 Antibody, JSP-1 Antibody, JSP1 Antibody, LMWDSP2 Antibody, MKP-X Antibody
Family / Subfamily:	Protein Phosphatase / LMW-DSP
Host	DUSP22 antibody was produced in Rabbit
Clonality:	Polyclonal
Immunogen Species:	DUSP22 / JSP 1 antibody was raised against Human
Antigen Type:	Synthetic peptide
Immunogen:	DUSP22 / JSP 1 antibody was raised against synthetic 17 amino acid peptide from near N-terminus of human DUSP22. Percent identity with other species by BLAST analysis: Human, Gorilla, Gibbon, Monkey, Marmoset, Bovine, Horse, Rabbit (100%); Mouse, Rat (94%); Elephant, Chicken (88%); Xenopus (82%).
Specificity:	Human DUSP22. BLAST analysis of the peptide immunogen showed no homology with other human proteins, except DUSP15 (59%).
Epitope:	N-Terminus
Reactivity:	Human, Gorilla, Gibbon, Monkey, Bovine, Horse, Rabbit
Predicted Reactivity:	Mouse, Rat
Purification:	Immunoaffinity purified
Presentation:	PBS, 0.1% sodium azide.
Recommended Storage:	Long term: -70°C; Short term: +4°C
Uses:	IHC - Paraffin (2 - 22 µg/ml) (Optimal dilution to be determined by the researcher)
Size:	50 µg
Concentration:	1 mg/ml

Immunohistochemistry Image:



Anti-DUSP22 antibody LS-A6809 IHC of human kidney. Immunohistochemistry of formalin-fixed, paraffin-embedded tissue after heat-induced antigen retrieval.

Requested From:

Japan

Laboratory Reagent For In Vitro Research Use Only

Not for resale without prior written consent from LifeSpan BioSciences, Inc.

Created on 9/23/2014

© 2014 LifeSpan BioSciences