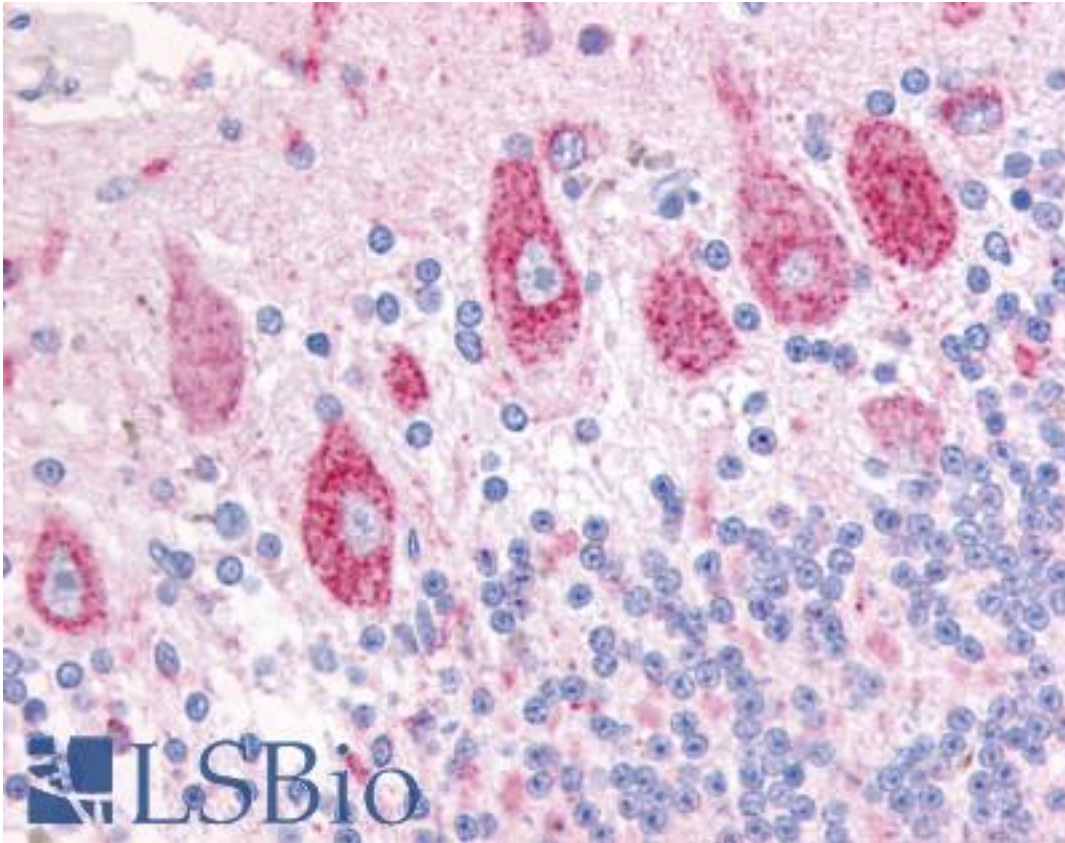


DUSP23 Rabbit anti-Human Polyclonal (Internal) Antibody - LS-A6806 - LSBio	
CatalogID:	LS-A6806
Target:	dual specificity phosphatase 23 (DUSP23)
Synonyms:	DUSP23 Antibody, DUSP25 Antibody, LDP3 Antibody, LDP-3 Antibody, RP11-190A12.1 Antibody, MOSP Antibody, VH1-like phosphatase Z Antibody, VHZ Antibody, VH1-like member Z Antibody
Family / Subfamily:	Protein Phosphatase / CDC14
Host	DUSP23 antibody was produced in Rabbit
Clonality:	Polyclonal
Immunogen Species:	DUSP23 antibody was raised against Human
Antigen Type:	Synthetic peptide
Immunogen:	DUSP23 antibody was raised against synthetic 16 amino acid peptide from internal region of human DUSP23. Percent identity with other species by BLAST analysis: Human, Gorilla, Monkey, Marmoset, Rat, Bovine, Bat, Horse (100%); Gibbon, Mouse, Rabbit (94%); Hamster, Elephant (88%); Opossum (81%).
Specificity:	Human DUSP23. BLAST analysis of the peptide immunogen showed no homology with other human proteins.
Epitope:	Internal
Reactivity:	Human, Gorilla, Monkey, Rat, Bat, Bovine, Horse
Predicted Reactivity:	Gibbon, Mouse, Rabbit
Purification:	Immunoaffinity purified
Presentation:	PBS, 0.1% sodium azide.
Recommended Storage:	Long term: -70°C; Short term: +4°C
Usage Summary:	Immunohistochemistry: LS-A6806 was validated for use in immunohistochemistry on a panel of 21 formalin-fixed, paraffin-embedded (FFPE) human tissues after heat induced antigen retrieval in pH 6.0 citrate buffer. After incubation with the primary antibody, slides were incubated with biotinylated secondary antibody, followed by alkaline phosphatase-streptavidin and chromogen. The stained slides were evaluated by a pathologist to confirm staining specificity. The optimal working concentration for LS-A6806 was determined to be 10 ug/ml.
Uses:	IHC - Paraffin (10 µg/ml), ELISA (Optimal dilution to be determined by the researcher)
Size:	50 µg
Concentration:	1 mg/ml

Immunohistochemistry Image:



Anti-DUSP23 antibody LS-A6806 IHC of human brain, cerebellum. Immunohistochemistry of formalin-fixed, paraffin-embedded tissue after heat-induced antigen retrieval.

Requested From:

Japan

Laboratory Reagent For In Vitro Research Use Only

Not for resale without prior written consent from LifeSpan BioSciences, Inc.

Created on 9/23/2014

© 2014 LifeSpan BioSciences