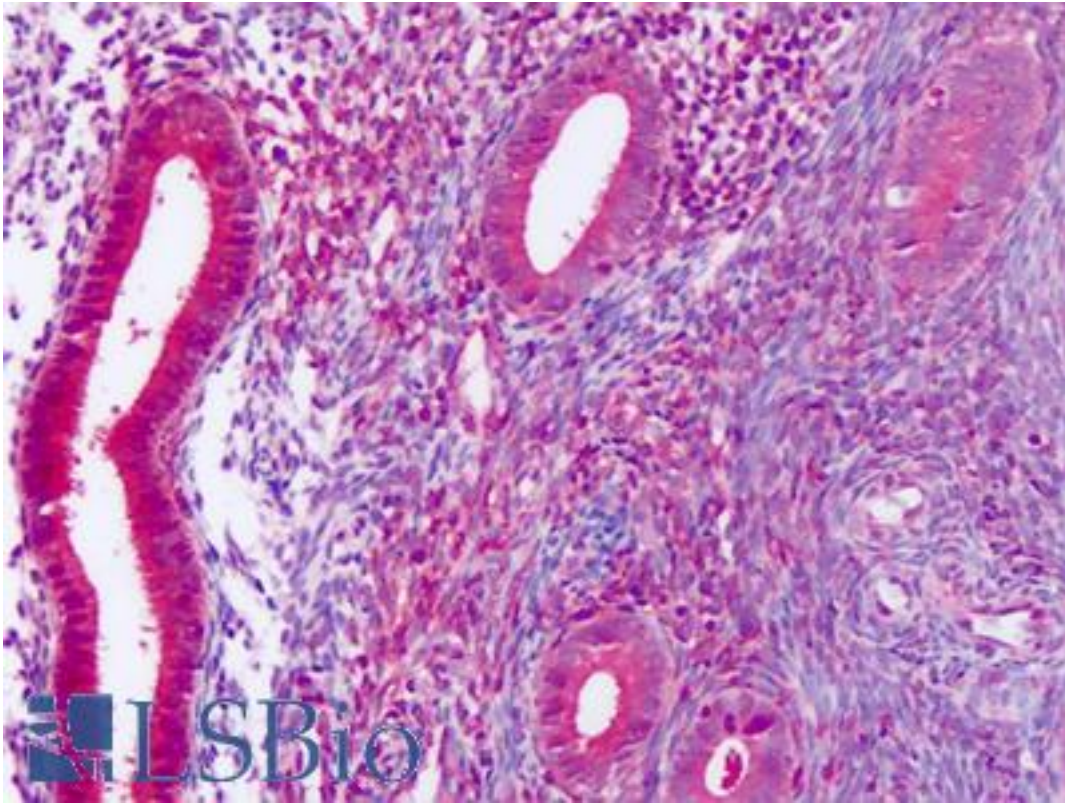


DUSP23 Rabbit anti-Human Polyclonal (Internal) Antibody - LS-A6803 - LSBio

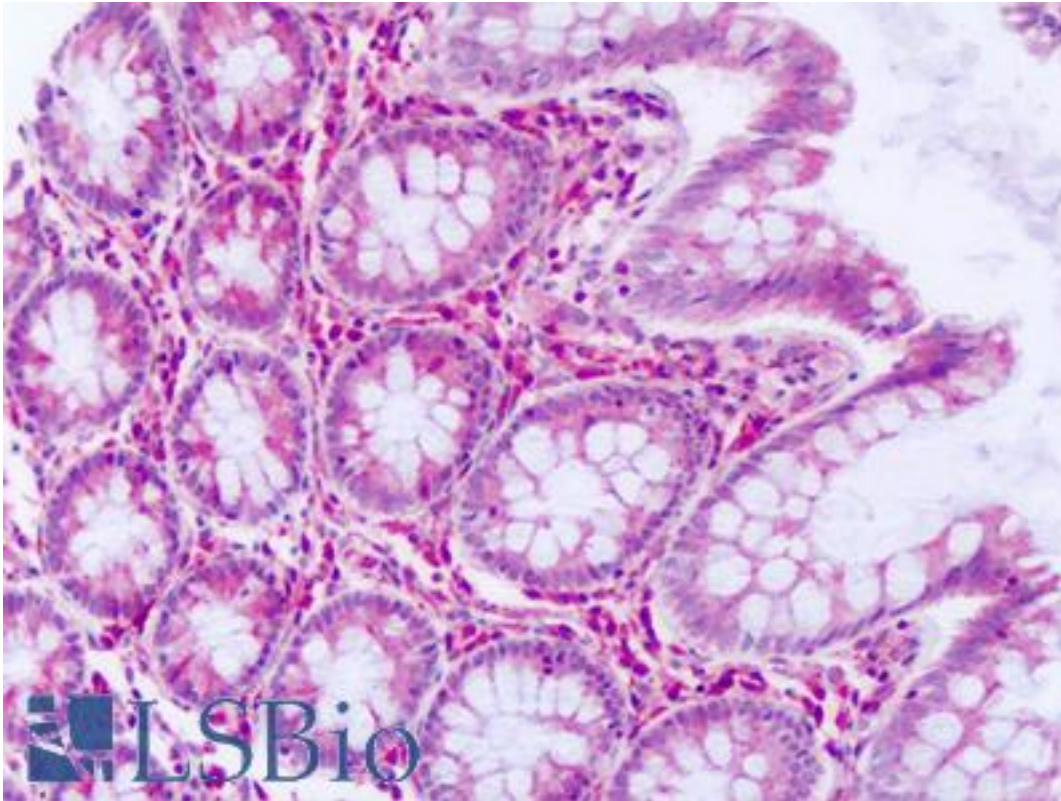
CatalogID:	LS-A6803
Target:	dual specificity phosphatase 23 (DUSP23)
Synonyms:	DUSP23 Antibody, DUSP25 Antibody, LDP3 Antibody, LDP-3 Antibody, RP11-190A12.1 Antibody, MOSP Antibody, VH1-like phosphatase Z Antibody, VHZ Antibody, VH1-like member Z Antibody
Family / Subfamily:	Protein Phosphatase / CDC14
Host	DUSP23 antibody was produced in Rabbit
Clonality:	Polyclonal
Immunogen Species:	DUSP23 antibody was raised against Human
Antigen Type:	Synthetic peptide
Immunogen:	DUSP23 antibody was raised against synthetic 18 amino acid peptide from internal region of human DUSP23. Percent identity with other species by BLAST analysis: Human, Gorilla, Gibbon, Monkey (100%); Marmoset, Horse, Rabbit (94%); Elephant, Bat (89%); Rat, Hamster, Bovine (83%).
Specificity:	Human DUSP23. BLAST analysis of the peptide immunogen showed no homology with other human proteins.
Epitope:	Internal
Reactivity:	Human, Gorilla, Gibbon
Predicted Reactivity:	Monkey, Horse, Rabbit
Purification:	Immunoaffinity purified
Presentation:	PBS, 0.1% sodium azide.
Recommended Storage:	Long term: -70°C; Short term: +4°C
Uses:	IHC - Paraffin (10 - 20 µg/ml) (Optimal dilution to be determined by the researcher)
Size:	50 µg
Concentration:	1 mg/ml

Immunohistochemistry Image:



Anti-DUSP23 antibody IHC of human uterus, endometrium. Immunohistochemistry of formalin-fixed, paraffin-embedded tissue after heat-induced antigen retrieval. Antibody LS-A6803 dilution 10-20 ug/ml.

Immunohistochemistry Image:



Anti-DUSP23 antibody IHC of human colon, epithelium. Immunohistochemistry of formalin-fixed, paraffin-embedded tissue after heat-induced antigen retrieval. Antibody LS-A6803 dilution 10-20 ug/ml.

Requested From:

Japan

Laboratory Reagent For In Vitro Research Use Only

Not for resale without prior written consent from LifeSpan BioSciences, Inc.

Created on 9/23/2014

© 2014 LifeSpan BioSciences