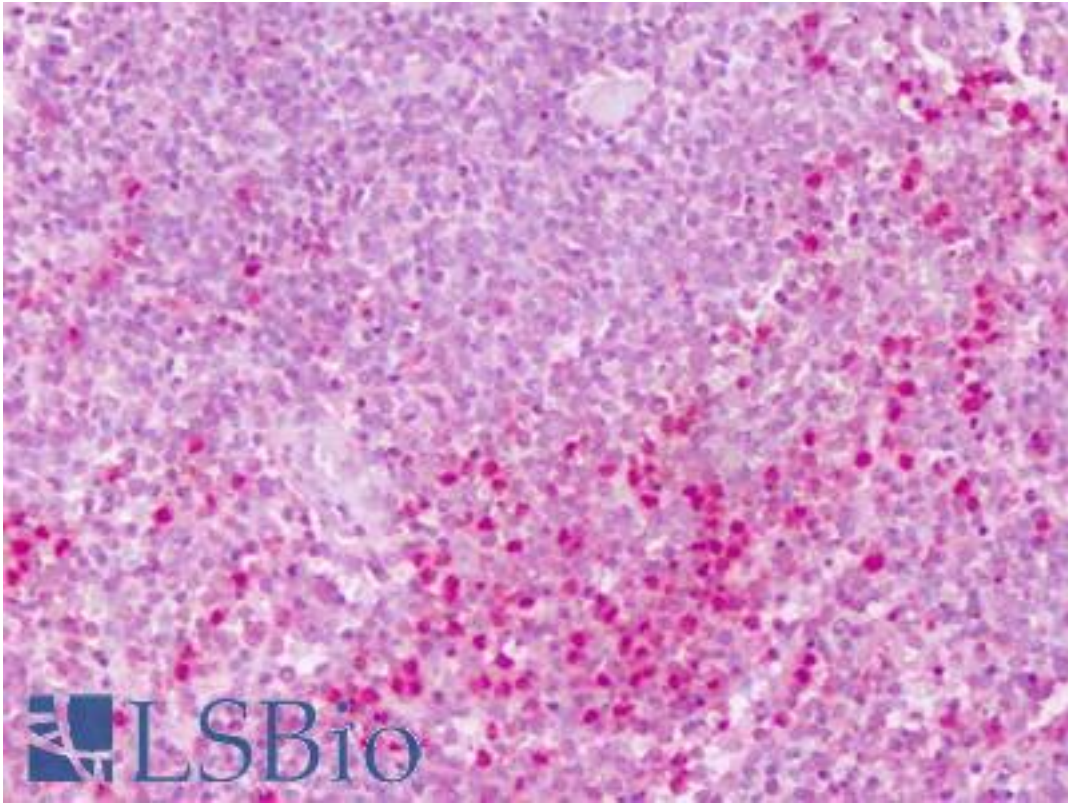


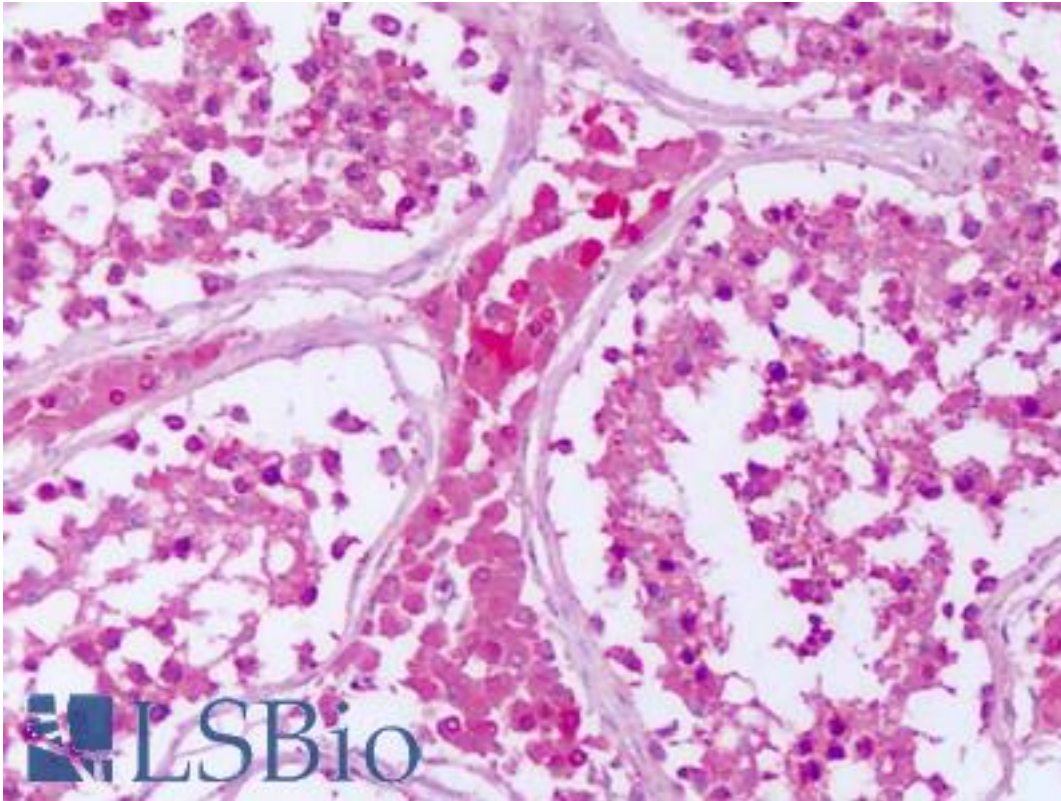
PTPRE / PTP Epsilon Rabbit anti-Human Polyclonal (Cytoplasmic Domain) Antibody - LS-A6799 - LSBio	
<b>CatalogID:</b>	LS-A6799
<b>Target:</b>	protein tyrosine phosphatase, receptor type, E (PTPRE)
<b>Synonyms:</b>	PTPRE Antibody, HPTPE Antibody, PTPE Antibody, Ptpepsilon Antibody, R-PTP-EPSILON Antibody, PTPvarepsilon Antibody, PTP epsilon Antibody
<b>Family / Subfamily:</b>	Protein Phosphatase / R4
<b>Host</b>	PTPRE antibody was produced in Rabbit
<b>Clonality:</b>	Polyclonal
<b>Immunogen Species:</b>	PTPRE / PTP Epsilon antibody was raised against Human
<b>Antigen Type:</b>	Synthetic peptide
<b>Immunogen:</b>	PTPRE / PTP Epsilon antibody was raised against synthetic 18 amino acid peptide from cytoplasmic domain of human PTPRE. Percent identity with other species by BLAST analysis: Human, Gibbon, Monkey, Marmoset, Hamster, Elephant, Panda, Dog, Bat, Bovine, Horse, Opossum, Turkey, Chicken, Platypus, Lizard (100%); Mouse, Rat, Xenopus, Zebrafish (94%); Seabass, Pufferfish (89%); Stickleback, Medaka (83%).
<b>Specificity:</b>	Human PTPRE. BLAST analysis of the peptide immunogen showed no homology with other human proteins, except PTPRA (67%).
<b>Epitope:</b>	Cytoplasmic Domain
<b>Reactivity:</b>	Human, Gibbon, Monkey, Bat, Bovine, Dog, Hamster, Horse, Chicken
<b>Predicted Reactivity:</b>	Mouse, Rat, Xenopus, Zebrafish
<b>Purification:</b>	Immunoaffinity purified
<b>Presentation:</b>	PBS, 0.1% sodium azide.
<b>Recommended Storage:</b>	Long term: -70°C; Short term: +4°C
<b>Uses:</b>	IHC - Paraffin (3 - 6 µg/ml) (Optimal dilution to be determined by the researcher)
<b>Size:</b>	50 µg
<b>Concentration:</b>	1 mg/ml

**Immunohistochemistry Image:**



Anti-PTPRE antibody IHC of human spleen. Immunohistochemistry of formalin-fixed, paraffin-embedded tissue after heat-induced antigen retrieval. Antibody LS-A6799 dilution 3-6 ug/ml.

**Immunohistochemistry Image:**



Anti-PTPRE antibody IHC of human testis. Immunohistochemistry of formalin-fixed, paraffin-embedded tissue after heat-induced antigen retrieval. Antibody LS-A6799 dilution 3-6 ug/ml.

**Requested From:**

Japan

Laboratory Reagent For In Vitro Research Use Only

Not for resale without prior written consent from LifeSpan BioSciences, Inc.

Created on 9/23/2014

© 2014 LifeSpan BioSciences