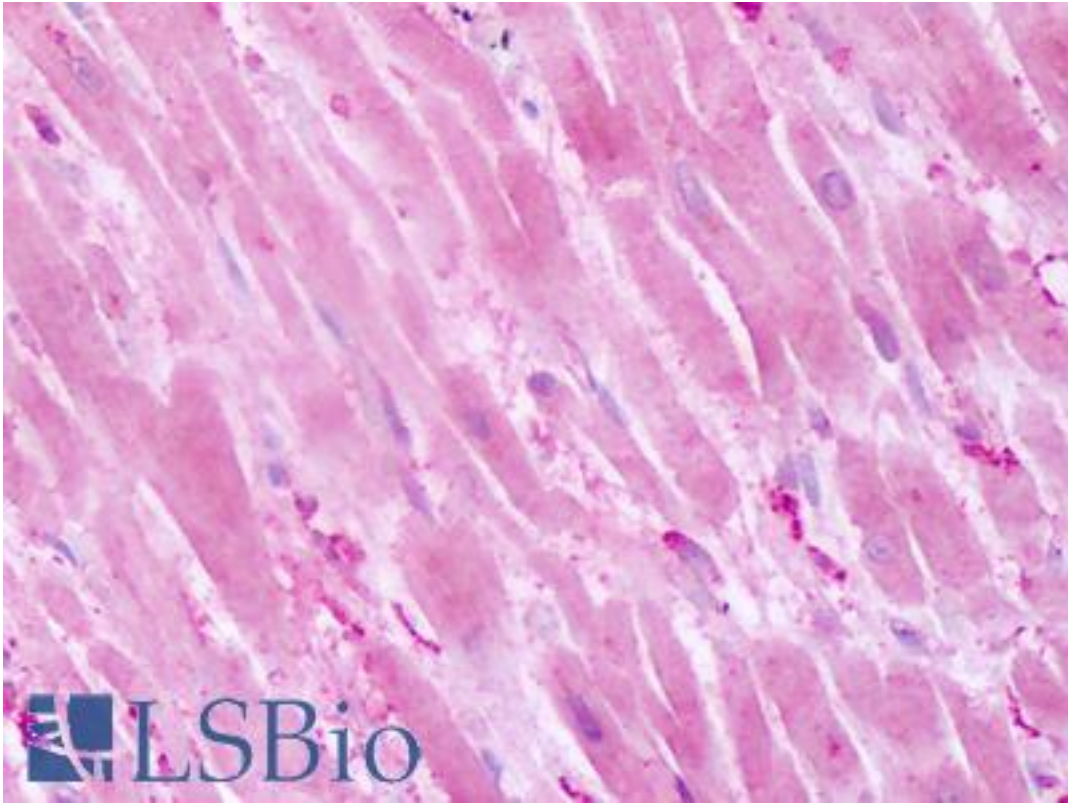


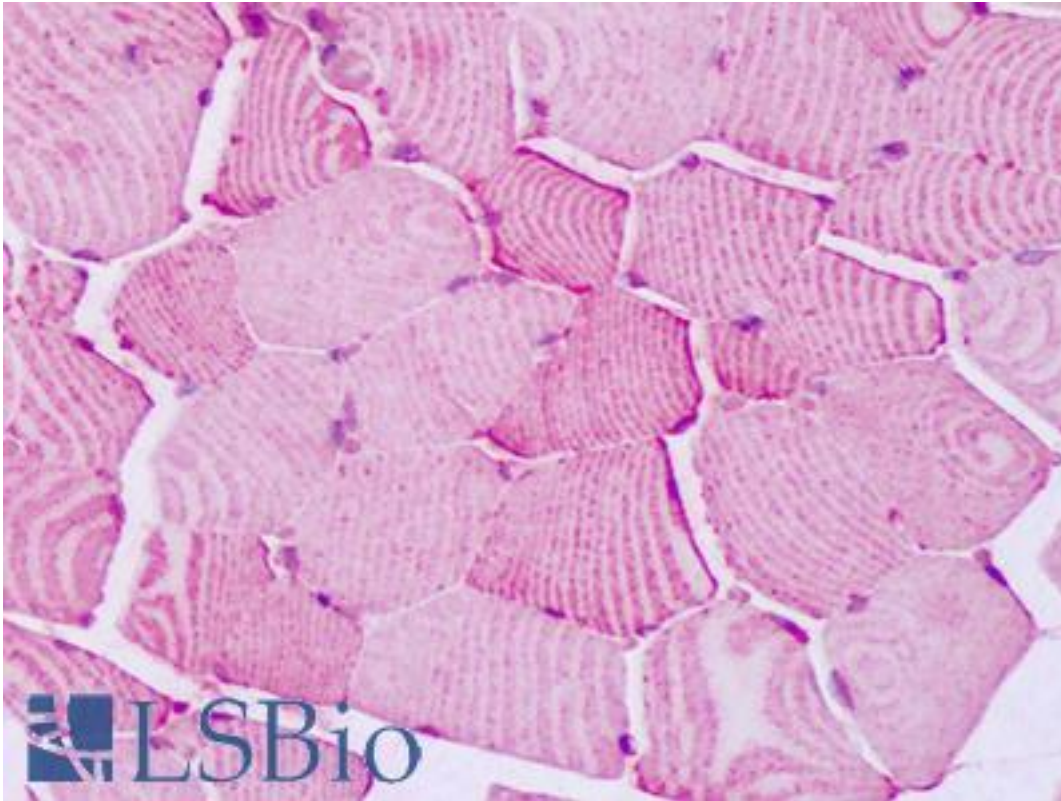
PTPRA / RPTP-Alpha Rabbit anti-Human Polyclonal (Cytoplasmic Domain) Antibody - LS-A6792 - LSBio	
CatalogID:	LS-A6792
Target:	protein tyrosine phosphatase, receptor type, A (PTPRA)
Synonyms:	PTPRA Antibody, HLPR Antibody, Htp alpha Antibody, HEPTP Antibody, HPTPA Antibody, PTPA Antibody, Ptpalpha Antibody, PTPRL2 Antibody, PTP alpha Antibody, PTPLCA-related phosphatase Antibody, R-PTP-alpha Antibody, RPTPA Antibody, Rptalpha Antibody, Tyrosine phosphatase alpha Antibody, RPTP alpha Antibody, HPTPalpha Antibody, LRP Antibody, PTPase-alpha Antibody
Family / Subfamily:	Protein Phosphatase / R4
Host	PTPRA antibody was produced in Rabbit
Clonality:	Polyclonal
Immunogen Species:	PTPRA / RPTP-Alpha antibody was raised against Human
Antigen Type:	Synthetic peptide
Immunogen:	PTPRA / RPTP-Alpha antibody was raised against synthetic 17 amino acid peptide from cytoplasmic domain of human PTPRA. Percent identity with other species by BLAST analysis: Human, Gorilla, Gibbon, Monkey, Marmoset, Mouse, Hamster, Panda, Bovine, Dog, Bat, Horse, Rabbit, Pig (100%); Rat (94%); Elephant, Turkey, Chicken (88%); Xenopus (82%).
Specificity:	Human PTPRA. BLAST analysis of the peptide immunogen showed no homology with other human proteins.
Epitope:	Cytoplasmic Domain
Reactivity:	Human, Gorilla, Gibbon, Monkey, Mouse, Bat, Bovine, Dog, Hamster, Horse, Pig, Rabbit
Predicted Reactivity:	Rat
Purification:	Immunoaffinity purified
Presentation:	PBS, 0.1% sodium azide.
Recommended Storage:	Long term: -70°C; Short term: +4°C
Uses:	IHC - Paraffin (10 µg/ml) (Optimal dilution to be determined by the researcher)
Size:	50 µg
Concentration:	1 mg/ml

Immunohistochemistry Image:



Anti-PTPRA antibody IHC of human heart. Immunohistochemistry of formalin-fixed, paraffin-embedded tissue after heat-induced antigen retrieval. Antibody LS-A6792 dilution 10 ug/ml.

Immunohistochemistry Image:



Anti-PTPRA antibody IHC of human skeletal muscle. Immunohistochemistry of formalin-fixed, paraffin-embedded tissue after heat-induced antigen retrieval. Antibody LS-A6792 dilution 10 ug/ml.

Requested From:

Japan

Laboratory Reagent For In Vitro Research Use Only

Not for resale without prior written consent from LifeSpan BioSciences, Inc.

Created on 9/23/2014

© 2014 LifeSpan BioSciences