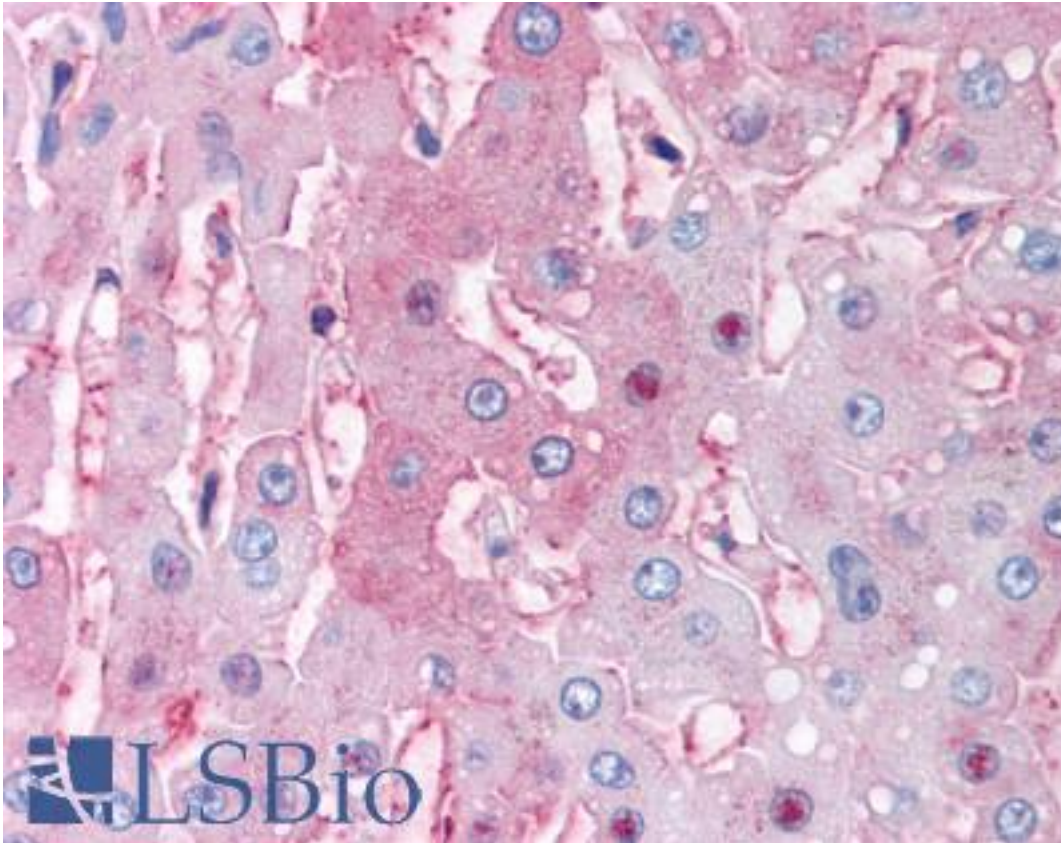


MKP-8 / DUSP26 Rabbit anti-Human Polyclonal (Internal) Antibody - LS-A6787 - LSBio

<b>CatalogID:</b>	LS-A6787
<b>Target:</b>	dual specificity phosphatase 26 (putative) (DUSP26)
<b>Synonyms:</b>	DUSP26 Antibody, DSP-4 Antibody, NATA1 Antibody, SKRP3 Antibody, MAP kinase phosphatase 8 Antibody, MKP-8 Antibody, DUSP24 Antibody, LDP-4 Antibody, LDP4 Antibody, MKP8 Antibody
<b>Family / Subfamily:</b>	Protein Phosphatase / Dual Specificity MKP
<b>Host</b>	DUSP26 antibody was produced in Rabbit
<b>Clonality:</b>	Polyclonal
<b>Immunogen Species:</b>	MKP-8 / DUSP26 antibody was raised against Human
<b>Antigen Type:</b>	Synthetic peptide
<b>Immunogen:</b>	MKP-8 / DUSP26 antibody was raised against synthetic 18 amino acid peptide from internal region of human DUSP26. Percent identity with other species by BLAST analysis: Human, Gorilla, Orangutan, Gibbon, Monkey, Mouse, Bat, Hamster, Elephant, Panda, Horse (100%); Marmoset, Rat, Rabbit, Opossum, Platypus (94%); Bovine, Pig (89%).
<b>Specificity:</b>	Human DUSP26. BLAST analysis of the peptide immunogen showed no homology with other human proteins.
<b>Epitope:</b>	Internal
<b>Reactivity:</b>	Human, Gorilla, Orangutan, Gibbon, Mouse, Bat, Hamster, Horse
<b>Predicted Reactivity:</b>	Monkey, Rat, Rabbit
<b>Purification:</b>	Immunoaffinity purified
<b>Presentation:</b>	PBS, 0.1% sodium azide.
<b>Recommended Storage:</b>	Long term: -70°C; Short term: +4°C
<b>Usage Summary:</b>	Immunohistochemistry: LS-A6787 was validated for use in immunohistochemistry on a panel of 21 formalin-fixed, paraffin-embedded (FFPE) human tissues after heat induced antigen retrieval in pH 6.0 citrate buffer. After incubation with the primary antibody, slides were incubated with biotinylated secondary antibody, followed by alkaline phosphatase-streptavidin and chromogen. The stained slides were evaluated by a pathologist to confirm staining specificity. The optimal working concentration for LS-A6787 was determined to be 6 ug/ml.
<b>Uses:</b>	IHC - Paraffin (6 µg/ml) (Optimal dilution to be determined by the researcher)
<b>Size:</b>	50 µg
<b>Concentration:</b>	1 mg/ml

**Immunohistochemistry Image:**



Anti-DUSP26 antibody LS-A6787 IHC of human liver. Immunohistochemistry of formalin-fixed, paraffin-embedded tissue after heat-induced antigen retrieval.

**Requested From:**

Japan

Laboratory Reagent For In Vitro Research Use Only

Not for resale without prior written consent from LifeSpan BioSciences, Inc.

Created on 9/23/2014

© 2014 LifeSpan BioSciences