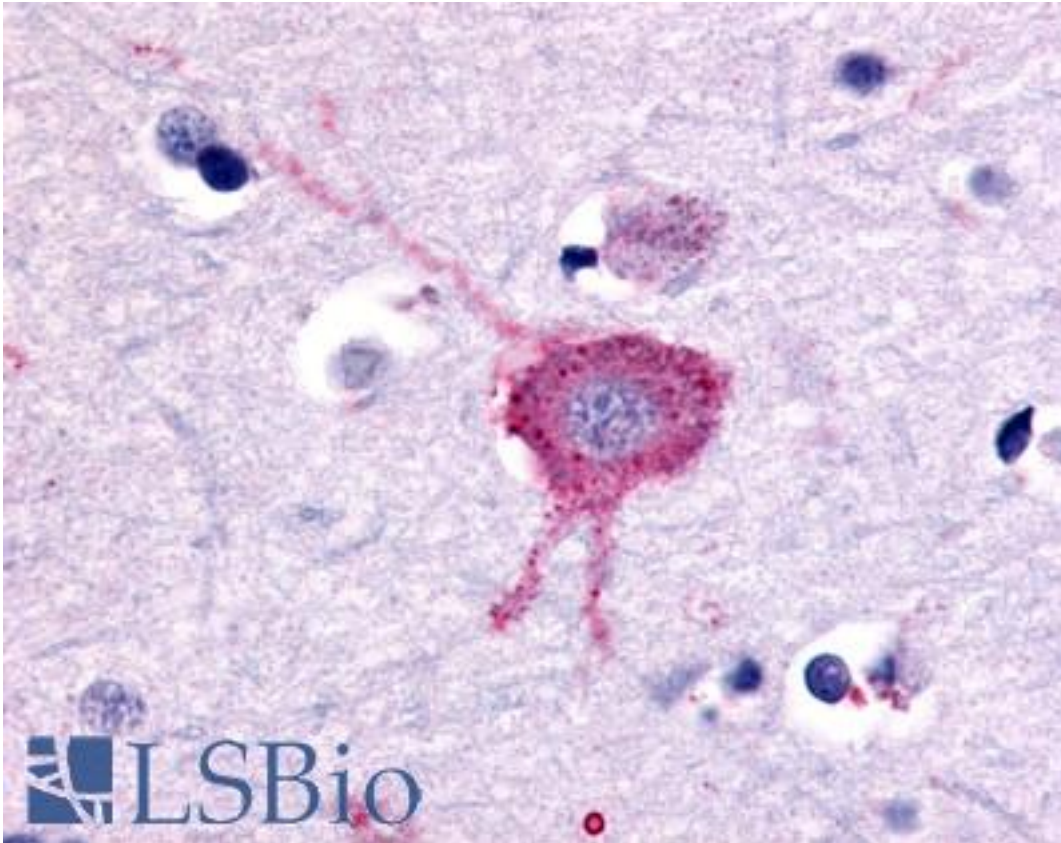


| GRM2 / MGLUR2 Rabbit anti-Human Polyclonal (N-Terminus) Antibody - LS-A6735 - LSBio |   |
|---|---|
| <b>CatalogID:</b>   | LS-A6735  |
| <b>Target:</b>  | glutamate receptor, metabotropic 2 (GRM2)   |
| <b>Synonyms:</b>  | GRM2 Antibody, Glutamate receptor homolog Antibody, GPRC1B Antibody, MGLu2 Antibody, Metabotropic Antibody, GLUR2 Antibody, MGLUR2 Antibody   |
| <b>Family / Subfamily:</b>  | GPCR / Metabotropic glutamate   |
| <b>Host</b>   | GRM2 antibody was produced in Rabbit  |
| <b>Clonality:</b>   | Polyclonal  |
| <b>Immunogen Species:</b>   | GRM2 / MGLUR2 antibody was raised against Human   |
| <b>Antigen Type:</b>  | Synthetic peptide   |
| <b>Immunogen:</b>   | GRM2 / MGLUR2 antibody was raised against synthetic 18 amino acid peptide from N-terminal extracellular domain of human GRM2 / MGLUR2. Percent identity with other species by BLAST analysis: Human, Chimpanzee, Gorilla, Gibbon, Monkey, Rat, Hamster, Panda, Dog, Bat, Rabbit (100%); Marmoset, Mouse, Elephant, Bovine, Horse (94%); Platypus (83%). |
| <b>Specificity:</b>   | Human GRM2 / MGLUR2. BLAST analysis of the peptide immunogen showed no homology with other human proteins, except GRM3 (50%).   |
| <b>Epitope:</b>   | N-Terminus  |
| <b>Reactivity:</b>  | Human, Chimpanzee, Gorilla, Gibbon, Rat, Bat, Dog, Hamster, Rabbit  |
| <b>Predicted Reactivity:</b>  | Monkey, Mouse, Bovine, Horse  |
| <b>Purification:</b>  | Immunoaffinity purified   |
| <b>Presentation:</b>  | PBS, 0.1% sodium azide.   |
| <b>Recommended Storage:</b>   | Long term: -70°C; Short term: +4°C  |
| <b>Uses:</b>  | IHC - Paraffin (32 µg/ml) (Optimal dilution to be determined by the researcher)   |
| <b>Size:</b>  | 50 µg   |
| <b>Concentration:</b>   | 1 mg/ml   |

**Immunohistochemistry Image:**



Anti-GRM2 / MGLUR2 antibody LS-A6735 IHC of human brain, neurons and glia.  
Immunohistochemistry of formalin-fixed, paraffin-embedded tissue after heat-induced antigen retrieval.

**Requested From:**

Japan

Laboratory Reagent For In Vitro Research Use Only

Not for resale without prior written consent from LifeSpan BioSciences, Inc.

Created on 9/23/2014

© 2014 LifeSpan BioSciences