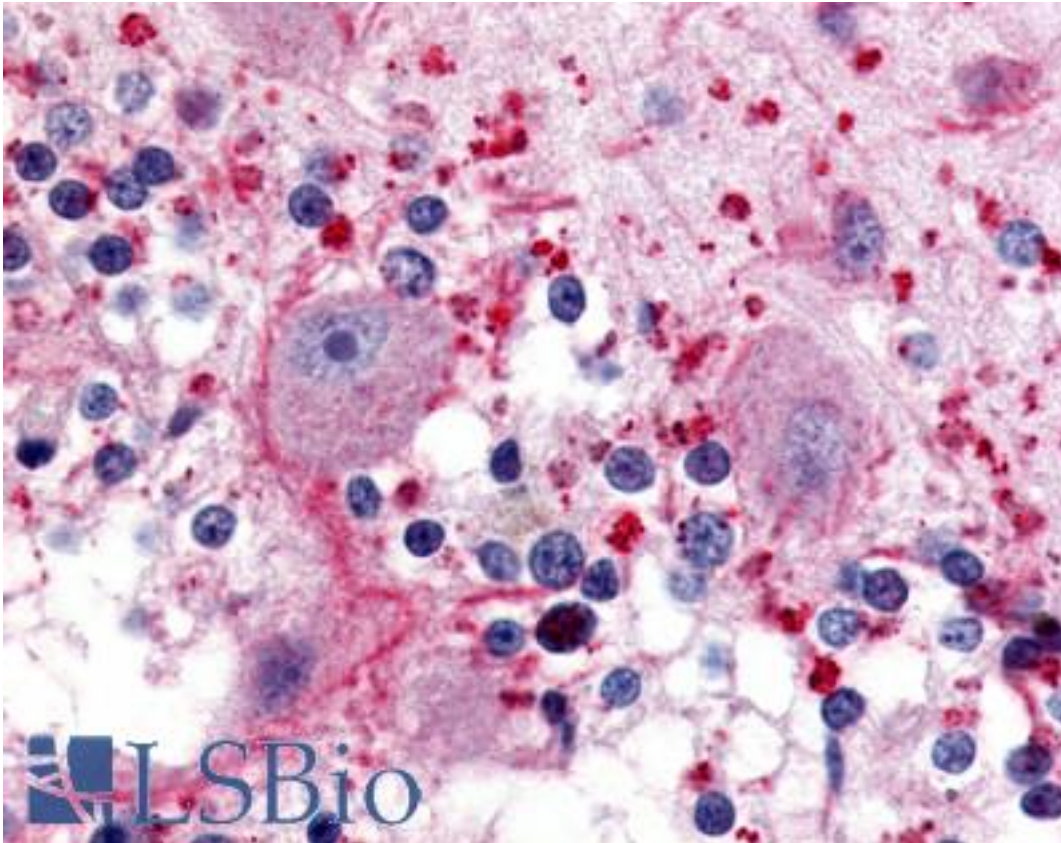


HTR5A / 5-HT5A Receptor Rabbit anti-Human Polyclonal (Cytoplasmic Domain) Antibody - LS-A6693 - LSBio	
<b>CatalogID:</b>	LS-A6693
<b>Target:</b>	5-hydroxytryptamine (serotonin) receptor 5A, G protein-coupled (HTR5A)
<b>Synonyms:</b>	HTR5A Antibody, 5-HT-5 Antibody, 5-HT-5A Antibody, 5-HT5A Antibody, 5-HT5a receptor Antibody, 5-hydroxytryptamine5a Antibody, Serotonin 5-HT5a receptor Antibody, Serotonin 5a receptor Antibody, Serotonin receptor 5A Antibody
<b>Family / Subfamily:</b>	GPCR / Serotonin
<b>Host</b>	HTR5A antibody was produced in Rabbit
<b>Clonality:</b>	Polyclonal
<b>Immunogen Species:</b>	HTR5A / 5-HT5A Receptor antibody was raised against Human
<b>Antigen Type:</b>	Synthetic peptide
<b>Immunogen:</b>	HTR5A / 5-HT5A Receptor antibody was raised against synthetic 14 amino acid peptide from 3rd cytoplasmic domain of human 5HT5A Receptor. Percent identity with other species by BLAST analysis: Human, Gorilla, Gibbon (100%); Monkey (93%); Elephant (86%).
<b>Specificity:</b>	Human 5HT5A Receptor. BLAST analysis of the peptide immunogen showed no homology with other human proteins.
<b>Epitope:</b>	Cytoplasmic Domain
<b>Reactivity:</b>	Human, Gorilla, Gibbon
<b>Predicted Reactivity:</b>	Monkey
<b>Purification:</b>	Immunoaffinity purified
<b>Presentation:</b>	PBS, 0.1% sodium azide.
<b>Recommended Storage:</b>	Long term: -70°C; Short term: +4°C
<b>Usage Summary:</b>	Immunohistochemistry: LS-A6693 was validated for use in immunohistochemistry on a panel of 21 formalin-fixed, paraffin-embedded (FFPE) human tissues after heat induced antigen retrieval in pH 6.0 citrate buffer. After incubation with the primary antibody, slides were incubated with biotinylated secondary antibody, followed by alkaline phosphatase-streptavidin and chromogen. The stained slides were evaluated by a pathologist to confirm staining specificity. The optimal working concentration for LS-A6693 was determined to be 10 ug/ml.
<b>Uses:</b>	IHC - Paraffin (10 µg/ml), ELISA (Optimal dilution to be determined by the researcher)
<b>Size:</b>	50 µg
<b>Concentration:</b>	1 mg/ml

**Immunohistochemistry Image:**



Anti-5HT5A Receptor antibody LS-A6693 IHC of human brain, cerebellum.  
Immunohistochemistry of formalin-fixed, paraffin-embedded tissue after heat-induced antigen retrieval.

**Requested From:**

Japan

Laboratory Reagent For In Vitro Research Use Only

Not for resale without prior written consent from LifeSpan BioSciences, Inc.

Created on 9/23/2014

© 2014 LifeSpan BioSciences