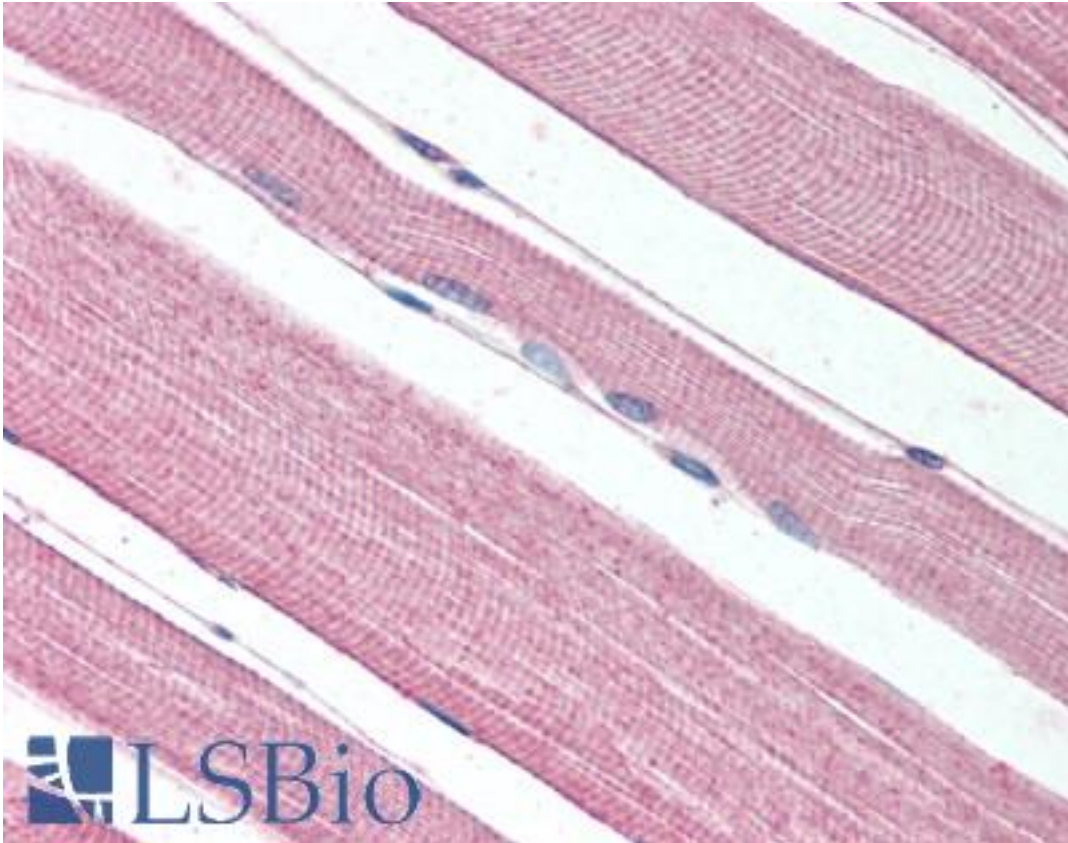


PROKR1 Rabbit anti-Human Polyclonal (N-Terminus) Antibody - LS-A6684 - LSBio

CatalogID:	LS-A6684
Target:	prokineticin receptor 1 (PROKR1)
Synonyms:	PROKR1 Antibody, G protein-coupled receptor 73 Antibody, GPCR73A Antibody, G protein-coupled receptor ZAQ Antibody, G-protein coupled receptor 73 Antibody, G-protein coupled receptor ZAQ Antibody, GPR73 Antibody, GPR73a Antibody, PK-R1 Antibody, Prokineticin receptor 1 Antibody, EG-VEGF receptor Antibody, PKR1 Antibody, ZAQ Antibody
Family / Subfamily:	GPCR / Prokineticin
Host	PROKR1 antibody was produced in Rabbit
Clonality:	Polyclonal
Immunogen Species:	PROKR1 antibody was raised against Human
Antigen Type:	Synthetic peptide
Immunogen:	PROKR1 antibody was raised against synthetic 15 amino acid peptide from N-terminal extracellular domain of human PROKR1. Percent identity with other species by BLAST analysis: Human, Gorilla, Gibbon, Monkey (100%); Marmoset (93%); Elephant, Bovine (80%).
Specificity:	Human PROKR1. BLAST analysis of the peptide immunogen showed no homology with other human proteins.
Epitope:	N-Terminus
Reactivity:	Human, Gorilla, Gibbon
Predicted Reactivity:	Monkey
Purification:	Immunoaffinity purified
Presentation:	PBS, 0.1% sodium azide.
Recommended Storage:	Long term: -70°C; Short term: +4°C
Uses:	IHC - Paraffin (7 - 16 µg/ml), Western blot (Optimal dilution to be determined by the researcher)
Size:	50 µg
Concentration:	1 mg/ml

Immunohistochemistry Image:



Anti-PROKR1 antibody LS-A6684 IHC of human skeletal muscle. Immunohistochemistry of formalin-fixed, paraffin-embedded tissue after heat-induced antigen retrieval.

Requested From:

Japan

Laboratory Reagent For In Vitro Research Use Only

Not for resale without prior written consent from LifeSpan BioSciences, Inc.

Created on 9/23/2014

© 2014 LifeSpan BioSciences