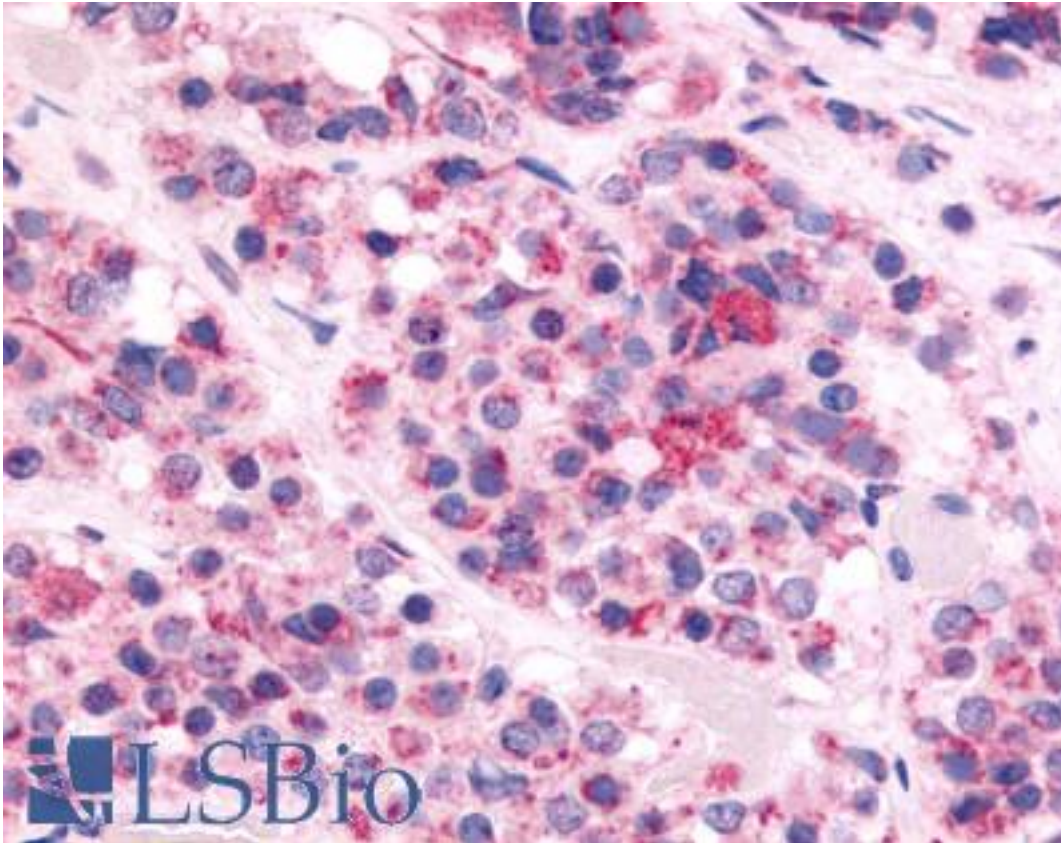


OX1R / Orexin Receptor 1 Rabbit anti-Human Polyclonal (C-Terminus) Antibody - LS-A6677 - LSBio

CatalogID:	LS-A6677
Target:	hypocretin (orexin) receptor 1 (HCRTR1)
Synonyms:	HCRTR1 Antibody, Hcrtr receptor 1 Antibody, Hypocretin receptor 1 Antibody, Hypocretin type 1 receptor Antibody, Hypocretin receptor-1 Antibody, Orexin receptor type 1 Antibody, Orexin type 1 receptor Antibody, Orexin-1 receptor Antibody, OX1 receptor Antibody, Orexin a receptor Antibody, Orexin receptor-1 Antibody, OX-R1 Antibody, Orexin receptor 1 Antibody, Ox1-R Antibody, OX1R Antibody, Hypocretin (orexin) receptor 1 Antibody, Hypocretin receptor type 1 Antibody, Ox-1-R Antibody
Family / Subfamily:	GPCR / Orexin
Host	HCRTR1 antibody was produced in Rabbit
Clonality:	Polyclonal
Immunogen Species:	OX1R / Orexin Receptor 1 antibody was raised against Human
Antigen Type:	Synthetic peptide
Immunogen:	OX1R / Orexin Receptor 1 antibody was raised against synthetic 16 amino acid peptide from C-terminus of human HCRTR1 / Orexin Receptor 1. Percent identity with other species by BLAST analysis: Human, Gorilla, Gibbon, Monkey, Dog, Horse, Pig (100%); Elephant, Bovine (94%); Marmoset, Panda (88%); Bat (81%).
Specificity:	Human HCRTR1 / Orexin Receptor 1. BLAST analysis of the peptide immunogen showed no homology with other human proteins.
Epitope:	C-Terminus
Reactivity:	Human, Gorilla, Gibbon, Monkey, Dog, Horse, Pig
Predicted Reactivity:	Bovine
Purification:	Immunoaffinity purified
Presentation:	PBS, 0.1% sodium azide.
Recommended Storage:	Long term: -70°C; Short term: +4°C
Uses:	IHC - Paraffin (14 µg/ml) (Optimal dilution to be determined by the researcher)
Size:	50 µg
Concentration:	1 mg/ml

Immunohistochemistry Image:



Anti-HCRTR1 / Orexin Receptor 1 antibody LS-A6677 IHC of human brain, anterior pituitary cells. Immunohistochemistry of formalin-fixed, paraffin-embedded tissue after heat-induced antigen retrieval.

Requested From:

Japan

Laboratory Reagent For In Vitro Research Use Only

Not for resale without prior written consent from LifeSpan BioSciences, Inc.

Created on 9/23/2014

© 2014 LifeSpan BioSciences