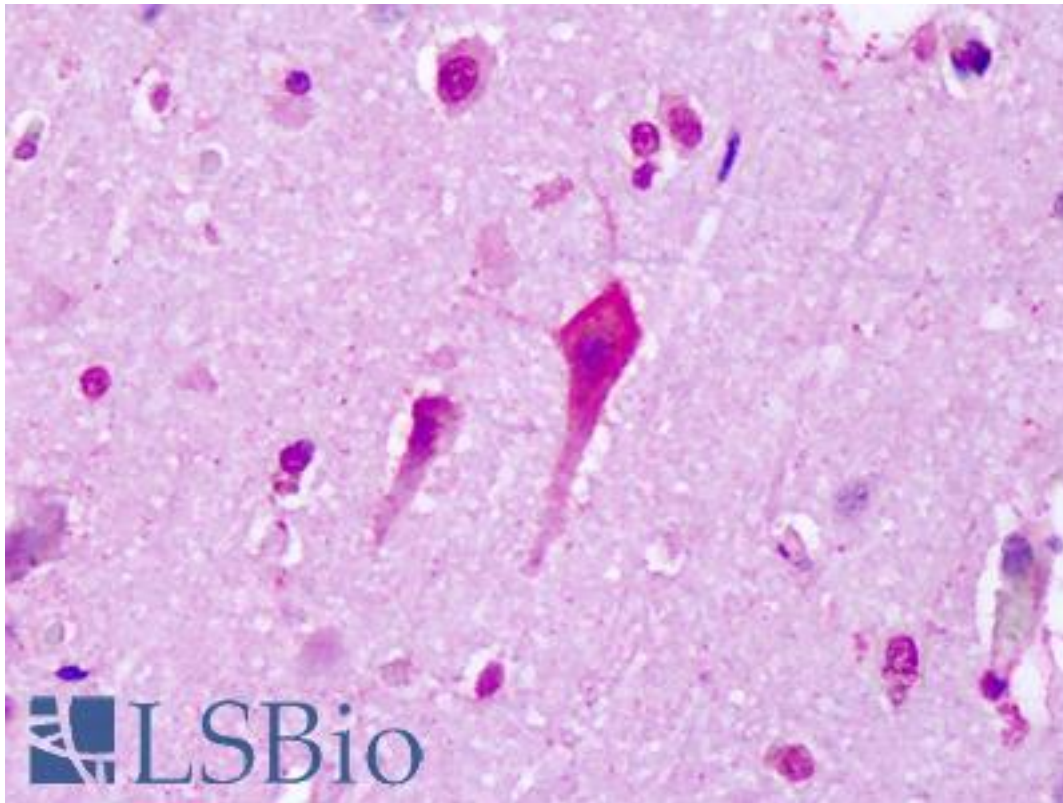


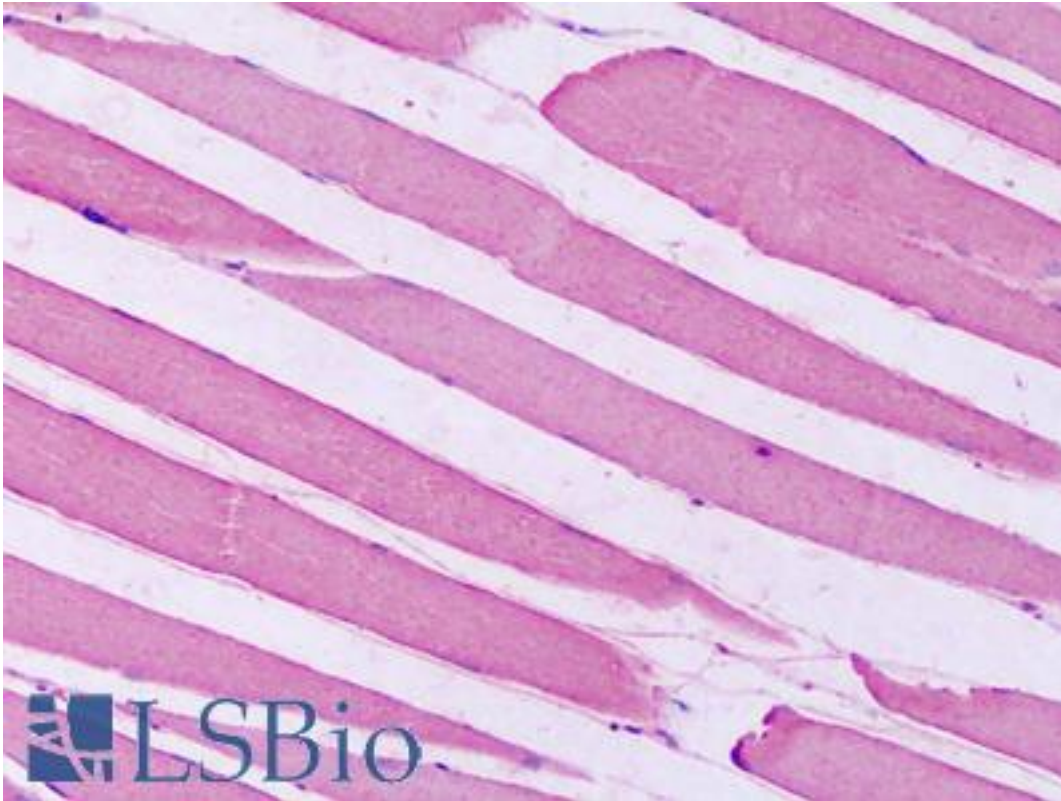
HTR7 / 5-HT7 Receptor Rabbit anti-Human Polyclonal (C-Terminus) Antibody - LS-A6674 - LSBio	
<b>CatalogID:</b>	LS-A6674
<b>Target:</b>	5-hydroxytryptamine (serotonin) receptor 7, adenylate cyclase-coupled (HTR7)
<b>Synonyms:</b>	HTR7 Antibody, 5-HT7 Antibody, 5-HT7 receptor Antibody, 5-HT-7 Antibody, 5-hydroxytryptamine 7 receptor Antibody, 5HT7 Antibody, 5-HT-X Antibody, 5-hydroxytryptamine receptor 7 Antibody, 5HT7 Receptor Antibody, HT7 Antibody, Serotonin 5-HT7 receptor Antibody, Serotonin receptor 7 Antibody
<b>Family / Subfamily:</b>	GPCR / Serotonin
<b>Host</b>	HTR7 antibody was produced in Rabbit
<b>Clonality:</b>	Polyclonal
<b>Immunogen Species:</b>	HTR7 / 5-HT7 Receptor antibody was raised against Human
<b>Antigen Type:</b>	Synthetic peptide
<b>Immunogen:</b>	HTR7 / 5-HT7 Receptor antibody was raised against synthetic 16 amino acid peptide from C-terminus of human 5HT7 Receptor. Percent identity with other species by BLAST analysis: Human (100%); Gorilla (94%); Gibbon (88%); Monkey (81%).
<b>Specificity:</b>	Human 5HT7 Receptor. BLAST analysis of the peptide immunogen showed no homology with other human proteins, except SEMA6C (56%), SSTR3 (50%).
<b>Epitope:</b>	C-Terminus
<b>Reactivity:</b>	Human
<b>Predicted Reactivity:</b>	Gorilla
<b>Purification:</b>	Immunoaffinity purified
<b>Presentation:</b>	PBS, 0.1% sodium azide.
<b>Recommended Storage:</b>	Long term: -70°C; Short term: +4°C
<b>Uses:</b>	IHC - Paraffin (13 µg/ml), Immunofluorescence (13 µg/ml) (Optimal dilution to be determined by the researcher)
<b>Size:</b>	50 µg
<b>Concentration:</b>	1 mg/ml

**Immunohistochemistry Image:**



Anti-HT7 / 5-HT7 antibody IHC of human brain, cortex, neurons. Immunohistochemistry of formalin-fixed, paraffin-embedded tissue after heat-induced antigen retrieval. Antibody LS-A6674 concentration 19 ug/ml.

**Immunohistochemistry Image:**



Anti-HT7 / 5-HT7 antibody IHC of human skeletal muscle. Immunohistochemistry of formalin-fixed, paraffin-embedded tissue after heat-induced antigen retrieval. Antibody LS-A6674 concentration 19 ug/ml.

**Requested From:**

Japan

Laboratory Reagent For In Vitro Research Use Only

Not for resale without prior written consent from LifeSpan BioSciences, Inc.

Created on 9/23/2014

© 2014 LifeSpan BioSciences