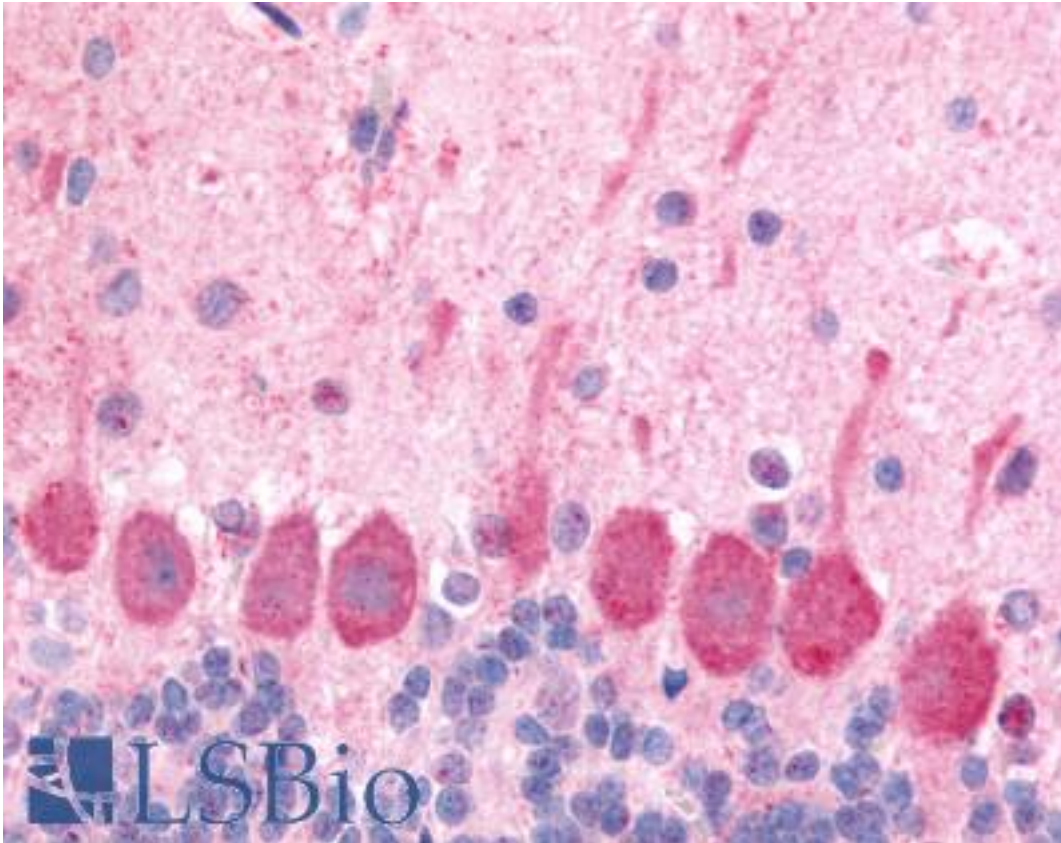


OX1R / Orexin Receptor 1 Rabbit anti-Human Polyclonal (Extracellular Domain) Antibody - LS-A6638 - LSBio

| | |
|------------------------------|--|
| CatalogID: | LS-A6638 |
| Target: | hypocretin (orexin) receptor 1 (HCRTR1) |
| Synonyms: | HCRTR1 Antibody, Hcrtr receptor 1 Antibody, Hypocretin receptor 1 Antibody, Hypocretin type 1 receptor Antibody, Hypocretin receptor-1 Antibody, Orexin receptor type 1 Antibody, Orexin type 1 receptor Antibody, Orexin-1 receptor Antibody, OX1 receptor Antibody, Orexin a receptor Antibody, Orexin receptor-1 Antibody, OX-R1 Antibody, Orexin receptor 1 Antibody, Ox1-R Antibody, OX1R Antibody, Hypocretin (orexin) receptor 1 Antibody, Hypocretin receptor type 1 Antibody, Ox-1-R Antibody |
| Family / Subfamily: | GPCR / Orexin |
| Host | HCRTR1 antibody was produced in Rabbit |
| Clonality: | Polyclonal |
| Immunogen Species: | OX1R / Orexin Receptor 1 antibody was raised against Human |
| Antigen Type: | Synthetic peptide |
| Immunogen: | OX1R / Orexin Receptor 1 antibody was raised against synthetic 14 amino acid peptide from 2nd extracellular domain of human HCRTR1 / Orexin Receptor 1. Percent identity with other species by BLAST analysis: Human, Gorilla, Gibbon, Monkey, Bovine, Rabbit, Pig, Platypus (100%); Marmoset, Rat, Elephant, Panda, Dog, Bat, Horse (93%); Mouse, Hamster (86%). |
| Specificity: | Human HCRTR1 / Orexin Receptor 1. BLAST analysis of the peptide immunogen showed no homology with other human proteins, except HCRTR2 (64%). |
| Epitope: | Extracellular Domain |
| Reactivity: | Human, Gorilla, Gibbon, Rat, Bovine, Pig, Rabbit |
| Predicted Reactivity: | Monkey, Bat, Dog, Horse |
| Purification: | Immunoaffinity purified |
| Presentation: | PBS, 0.1% sodium azide. |
| Recommended Storage: | Long term: -70°C; Short term: +4°C |
| Uses: | IHC - Paraffin (3.8 µg/ml) (Optimal dilution to be determined by the researcher) |
| Size: | 50 µg |
| Concentration: | 1 mg/ml |

Immunohistochemistry Image:



Anti-HCRTR1 / Orexin Receptor 1 antibody LS-A6638 IHC of rat brain, Purkinje neurons. Immunohistochemistry of formalin-fixed, paraffin-embedded tissue after heat-induced antigen retrieval.

Requested From:

Japan

Laboratory Reagent For In Vitro Research Use Only

Not for resale without prior written consent from LifeSpan BioSciences, Inc.

Created on 9/23/2014

© 2014 LifeSpan BioSciences