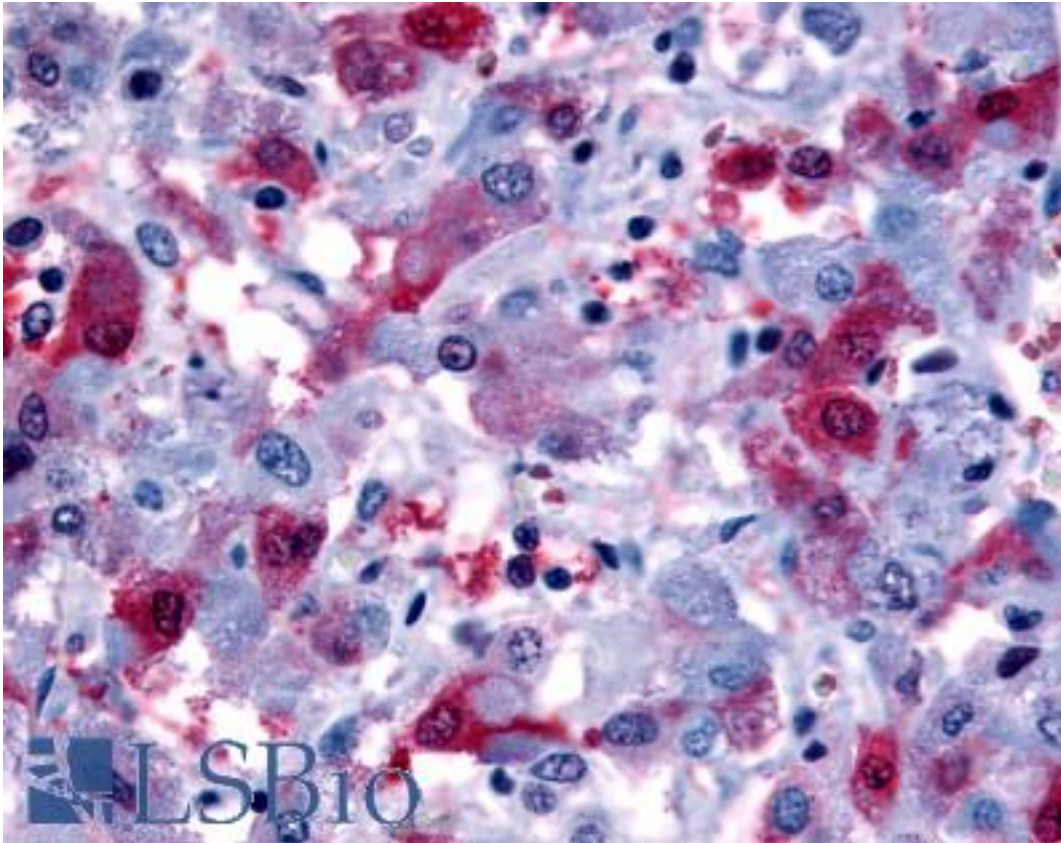


FP / PTGFR Rabbit anti-Human Polyclonal (Cytoplasmic Domain) Antibody - LS-A6625 - LSBio	
CatalogID:	LS-A6625
Target:	prostaglandin F receptor (FP) (PTGFR)
Synonyms:	PTGFR Antibody, PGF receptor Antibody, PGF2-alpha receptor Antibody, Prostaglandin F receptor (FP) Antibody, FP Antibody, PGF2 alpha receptor Antibody, Prostaglandin F receptor Antibody, Prostanoid FP receptor Antibody
Family / Subfamily:	GPCR / Prostanoid
Host	PTGFR antibody was produced in Rabbit
Clonality:	Polyclonal
Immunogen Species:	FP / PTGFR antibody was raised against Human
Antigen Type:	Synthetic peptide
Immunogen:	FP / PTGFR antibody was raised against synthetic 14 amino acid peptide from 1st cytoplasmic domain of human PTGFR. Percent identity with other species by BLAST analysis: Human, Gorilla, Gibbon, Monkey, Mouse, Elephant, Panda, Bat, Dog, Rabbit, Horse, Turkey, Chicken, Platypus (100%); Marmoset, Rat, Xenopus (93%); Sheep, Bovine, Pig (86%).
Specificity:	Human PTGFR. BLAST analysis of the peptide immunogen showed no homology with other human proteins.
Epitope:	Cytoplasmic Domain
Reactivity:	Human, Gorilla, Gibbon, Mouse, Bat, Dog, Horse, Rabbit, Chicken
Predicted Reactivity:	Monkey, Rat, Xenopus
Purification:	Immunoaffinity purified
Presentation:	PBS, 0.1% sodium azide.
Recommended Storage:	Long term: -70°C; Short term: +4°C
Uses:	IHC - Paraffin (10 µg/ml) (Optimal dilution to be determined by the researcher)
Size:	50 µg
Concentration:	1 mg/ml

Immunohistochemistry Image:



Anti-PTGFR antibody LS-A6625 IHC of human adrenal, pheochromocytes.
Immunohistochemistry of formalin-fixed, paraffin-embedded tissue after heat-induced antigen retrieval.

Requested From:

Japan

Laboratory Reagent For In Vitro Research Use Only

Not for resale without prior written consent from LifeSpan BioSciences, Inc.

Created on 9/23/2014

© 2014 LifeSpan BioSciences