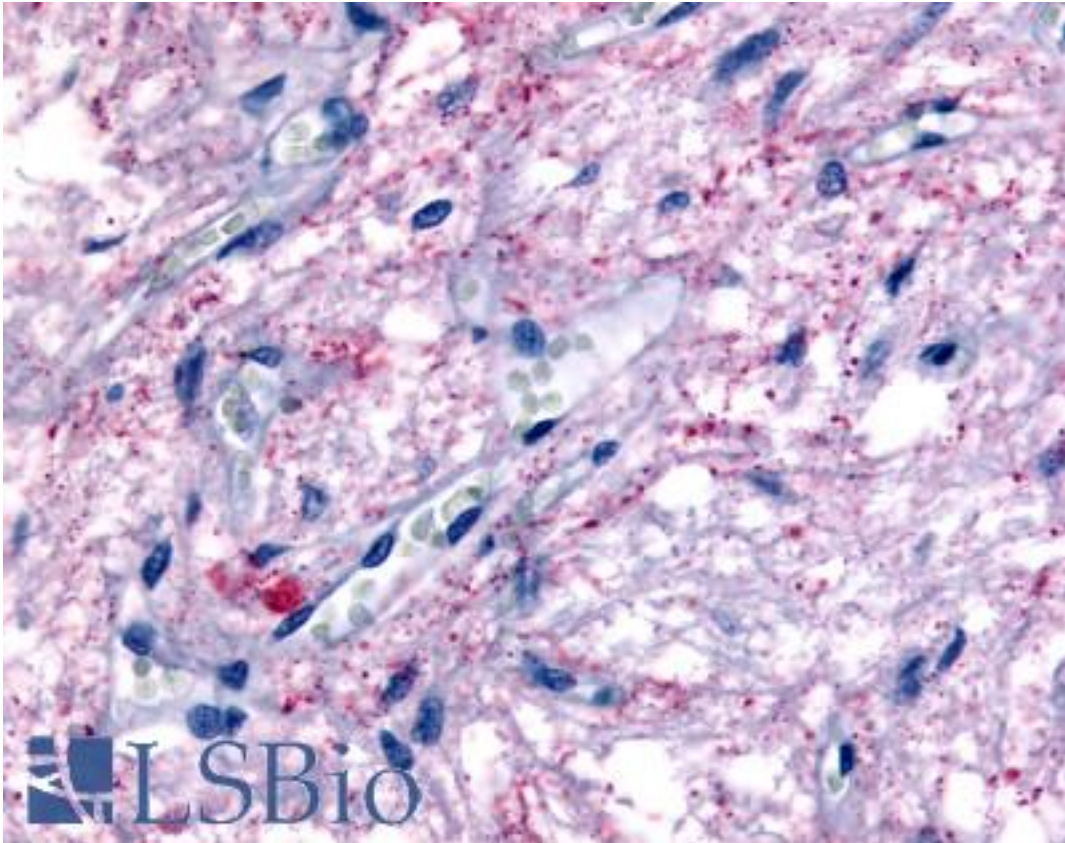


GPR50 Rabbit anti-Human Polyclonal (Cytoplasmic Domain) Antibody - LS-A6618 - LSBio	
CatalogID:	LS-A6618
Target:	G protein-coupled receptor 50 (GPR50)
Synonyms:	GPR50 Antibody, G protein-coupled receptor 50 Antibody, Mel1c Antibody, Melatonin-related receptor Antibody, MTNRL Antibody, H9 Antibody
Family / Subfamily:	GPCR / Orphan-A
Host	GPR50 antibody was produced in Rabbit
Clonality:	Polyclonal
Immunogen Species:	GPR50 antibody was raised against Human
Antigen Type:	Synthetic peptide
Immunogen:	GPR50 antibody was raised against synthetic 18 amino acid peptide from 3rd cytoplasmic domain of human GPR50. Percent identity with other species by BLAST analysis: Human, Gorilla, Monkey, Marmoset, Sheep, Dog (100%); Gibbon, Mouse, Rat, Panda, Bovine, Rabbit (94%); Bat (89%); Elephant (83%).
Specificity:	Human GPR50. BLAST analysis of the peptide immunogen showed no homology with other human proteins.
Epitope:	Cytoplasmic Domain
Reactivity:	Human, Gorilla, Monkey, Dog, Sheep
Predicted Reactivity:	Gibbon, Mouse, Rat, Bovine, Rabbit
Purification:	Immunoaffinity purified
Presentation:	PBS, 0.1% sodium azide.
Recommended Storage:	Long term: -70°C; Short term: +4°C
Uses:	IHC - Paraffin (3 - 30 µg/ml) (Optimal dilution to be determined by the researcher)
Size:	50 µg
Concentration:	1 mg/ml

Immunohistochemistry Image:



Anti-GPR50 antibody LS-A6618 IHC of human pituitary. Immunohistochemistry of formalin-fixed, paraffin-embedded tissue after heat-induced antigen retrieval.

Requested From:

Japan

Laboratory Reagent For In Vitro Research Use Only

Not for resale without prior written consent from LifeSpan BioSciences, Inc.

Created on 9/23/2014

© 2014 LifeSpan BioSciences