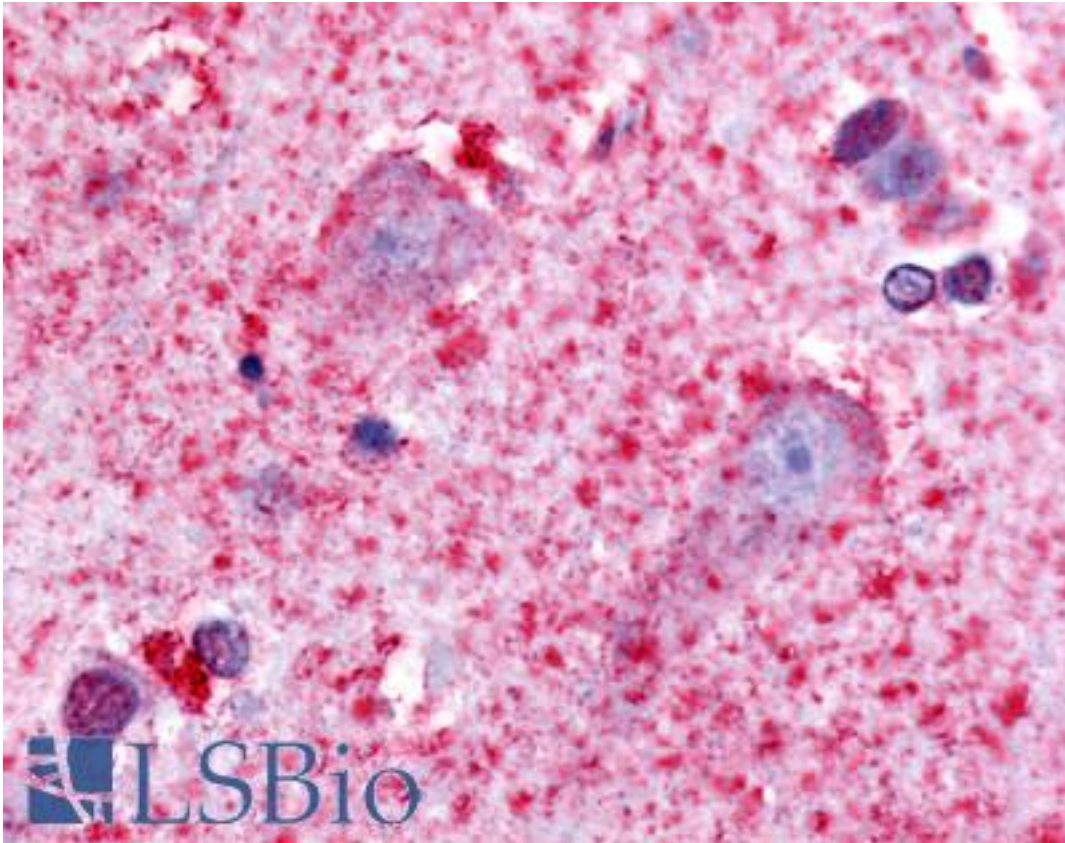


HTR7 / 5-HT7 Receptor Rabbit anti-Human Polyclonal (Cytoplasmic Domain) Antibody - LS-A659 - LSBio	
CatalogID:	LS-A659
Target:	5-hydroxytryptamine (serotonin) receptor 7, adenylate cyclase-coupled (HTR7)
Synonyms:	HTR7 Antibody, 5-HT7 Antibody, 5-HT7 receptor Antibody, 5-HT-7 Antibody, 5-hydroxytryptamine 7 receptor Antibody, 5HT7 Antibody, 5-HT-X Antibody, 5-hydroxytryptamine receptor 7 Antibody, 5HT7 Receptor Antibody, HT7 Antibody, Serotonin 5-HT7 receptor Antibody, Serotonin receptor 7 Antibody
Family / Subfamily:	GPCR / Serotonin
Host	HTR7 antibody was produced in Rabbit
Clonality:	Polyclonal
Immunogen Species:	HTR7 / 5-HT7 Receptor antibody was raised against Human
Antigen Type:	Synthetic peptide
Immunogen:	HTR7 / 5-HT7 Receptor antibody was raised against synthetic 19 amino acid peptide from 3rd cytoplasmic domain of human 5HT7 Receptor. Percent identity with other species by BLAST analysis: Human, Gorilla, Gibbon, Monkey (100%); Marmoset, Rat, Bovine, Dog, Hamster, Panda, Horse, Pig, Guinea pig (95%); Mouse, Bat (89%); Opossum (84%).
Specificity:	Human 5HT7 Receptor. BLAST analysis of the peptide immunogen showed no homology with other human proteins.
Epitope:	Cytoplasmic Domain
Reactivity:	Human, Gorilla, Gibbon
Predicted Reactivity:	Monkey, Rat, Bovine, Dog, Guinea pig, Hamster, Horse, Pig
Purification:	Immunoaffinity purified
Presentation:	PBS, 0.1% sodium azide.
Recommended Storage:	Long term: -70°C; Short term: +4°C
Usage Summary:	Immunohistochemistry: LS-A659 was validated for use in immunohistochemistry on a panel of 21 formalin-fixed, paraffin-embedded (FFPE) human tissues after heat induced antigen retrieval in pH 6.0 citrate buffer. After incubation with the primary antibody, slides were incubated with biotinylated secondary antibody, followed by alkaline phosphatase-streptavidin and chromogen. The stained slides were evaluated by a pathologist to confirm staining specificity. The optimal working concentration for LS-A659 was determined to be 10 ug/ml.
Uses:	IHC - Paraffin (10 µg/ml), ELISA (Optimal dilution to be determined by the researcher)
Size:	50 µg
Concentration:	1 mg/ml

Immunohistochemistry Image:



Anti-5HT7 Receptor antibody LS-A659 IHC of human brain, cortex. Immunohistochemistry of formalin-fixed, paraffin-embedded tissue after heat-induced antigen retrieval.

Requested From:

Japan

Laboratory Reagent For In Vitro Research Use Only

Not for resale without prior written consent from LifeSpan BioSciences, Inc.

Created on 9/23/2014

© 2014 LifeSpan BioSciences