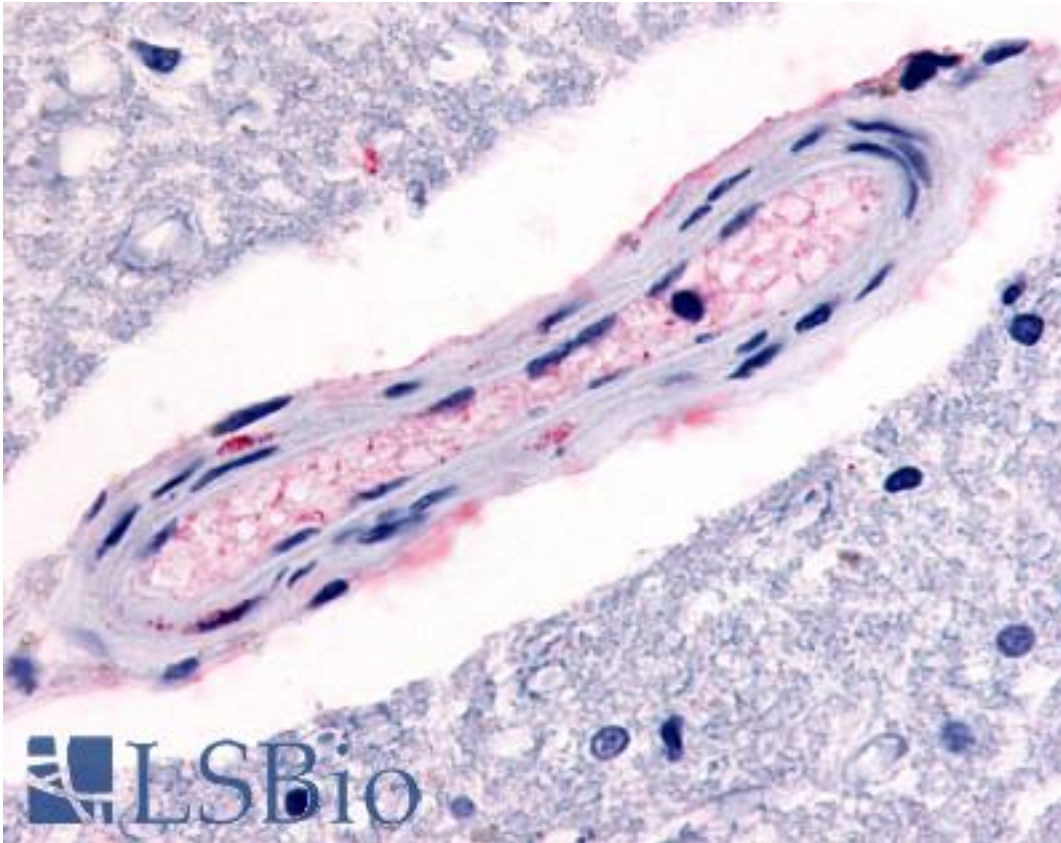


HTR4 / 5-HT4 Receptor Rabbit anti-Human Polyclonal (C-Terminus) Antibody - LS-A657 - LSBio	
CatalogID:	LS-A657
Target:	5-hydroxytryptamine (serotonin) receptor 4, G protein-coupled (HTR4)
Synonyms:	HTR4 Antibody, 5-HT4 Antibody, 5-HT4R Antibody, 5-HT-4 Antibody, 5HT4 receptor Antibody, 5-HT4 receptor Antibody, 5-hydroxytryptamine 4 receptor Antibody, 5-hydroxytryptamine receptor 4 Antibody, Serotonin 5-HT-4a receptor Antibody, Serotonin receptor 4 Antibody, Cardiac 5-HT4 receptor Antibody, Serotonin 4 receptor Antibody, Serotonin 5-HT-4 receptor Antibody
Family / Subfamily:	GPCR / Serotonin
Host	HTR4 antibody was produced in Rabbit
Clonality:	Polyclonal
Immunogen Species:	HTR4 / 5-HT4 Receptor antibody was raised against Human
Antigen Type:	Synthetic peptide
Immunogen:	HTR4 / 5-HT4 Receptor antibody was raised against synthetic 20 amino acid peptide from C-terminus of human 5HT4 Receptor. Percent identity with other species by BLAST analysis: Human, Gorilla, Gibbon, Monkey, Marmoset, Elephant, Horse, Pig (100%); Panda, Dog, Rabbit (95%); Bat, Bovine (90%); Guinea pig (85%); Mouse, Rat (80%).
Specificity:	Human 5HT4 Receptor. BLAST analysis of the peptide immunogen showed no homology with other human proteins.
Epitope:	C-Terminus
Reactivity:	Human, Gorilla, Gibbon, Monkey, Horse, Pig
Predicted Reactivity:	Bat, Bovine, Dog, Rabbit
Purification:	Immunoaffinity purified
Presentation:	PBS, 0.1% sodium azide.
Recommended Storage:	Long term: -70°C; Short term: +4°C
Uses:	IHC - Paraffin (7 - 17 µg/ml) (Optimal dilution to be determined by the researcher)
Size:	50 µg
Concentration:	1 mg/ml

Immunohistochemistry Image:



Anti-5HT4 Receptor antibody LS-A657 IHC of human brain, vessel. Immunohistochemistry of formalin-fixed, paraffin-embedded tissue after heat-induced antigen retrieval.

Requested From:

Japan

Laboratory Reagent For In Vitro Research Use Only

Not for resale without prior written consent from LifeSpan BioSciences, Inc.

Created on 9/23/2014

© 2014 LifeSpan BioSciences