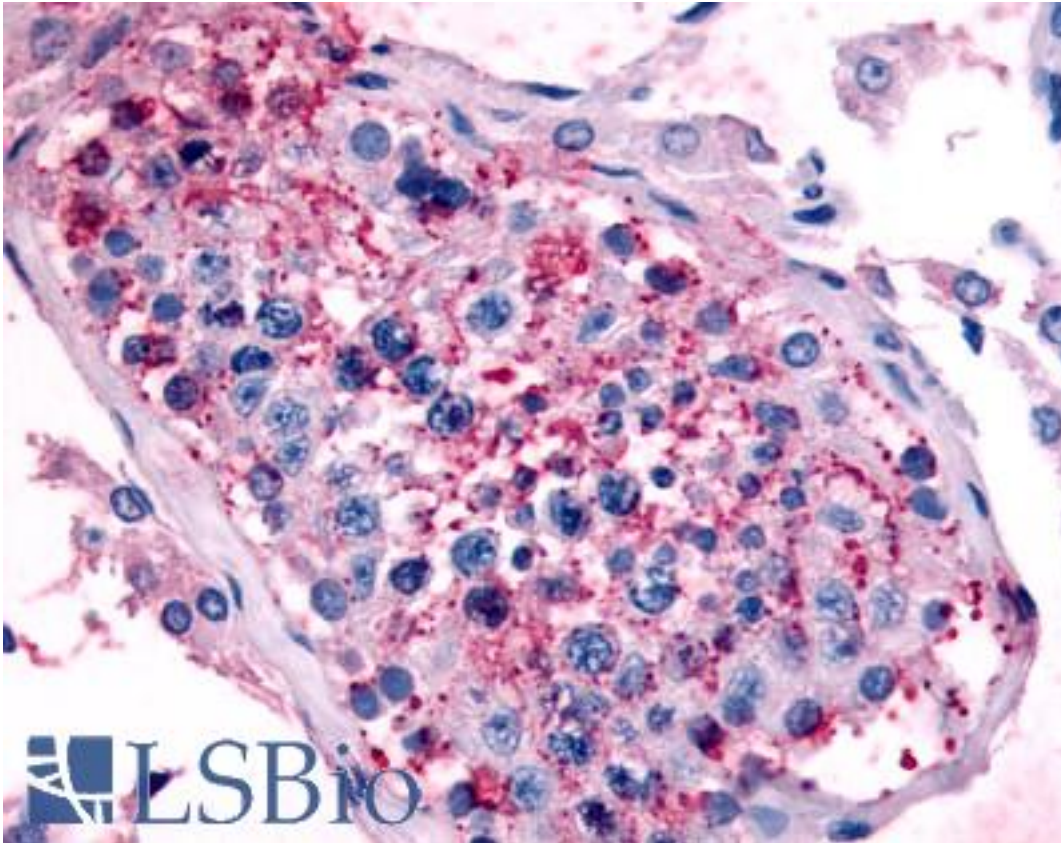


HTR1E / 5-HT1E Receptor Rabbit anti-Human Polyclonal (Cytoplasmic Domain) Antibody - LS-A6374 - LSBio

CatalogID:	LS-A6374
Target:	5-hydroxytryptamine (serotonin) receptor 1E, G protein-coupled (HTR1E)
Synonyms:	HTR1E Antibody, 5-HT1E Antibody, 5-HT1e receptor Antibody, 5-HT-1E Antibody, 5HT1E Receptor Antibody, HT1e receptor Antibody, S31 Antibody, Serotonin 5-HT-1e receptor Antibody, Serotonin 1e receptor Antibody, Serotonin receptor 1E Antibody
Family / Subfamily:	GPCR / Serotonin
Host	HTR1E antibody was produced in Rabbit
Clonality:	Polyclonal
Immunogen Species:	HTR1E / 5-HT1E Receptor antibody was raised against Human
Antigen Type:	Synthetic peptide
Immunogen:	HTR1E / 5-HT1E Receptor antibody was raised against synthetic 19 amino acid peptide from 3rd cytoplasmic domain of human 5HT1E Receptor. Percent identity with other species by BLAST analysis: Human, Chimpanzee, Gorilla, Monkey, Bat, Elephant, Horse, Guinea pig (100%); Orangutan, Gibbon, Bovine (95%); Panda (89%); Opossum (84%).
Specificity:	Human 5HT1E Receptor. BLAST analysis of the peptide immunogen showed no homology with other human proteins.
Epitope:	Cytoplasmic Domain
Reactivity:	Human, Chimpanzee, Gorilla, Monkey, Bat, Guinea pig, Horse
Predicted Reactivity:	Orangutan, Gibbon, Bovine
Purification:	Immunoaffinity purified
Presentation:	PBS, 0.1% sodium azide.
Recommended Storage:	Long term: -70°C; Short term: +4°C
Usage Summary:	Immunohistochemistry: LS-A6374 was validated for use in immunohistochemistry on a panel of 21 formalin-fixed, paraffin-embedded (FFPE) human tissues after heat induced antigen retrieval in pH 6.0 citrate buffer. After incubation with the primary antibody, slides were incubated with biotinylated secondary antibody, followed by alkaline phosphatase-streptavidin and chromogen. The stained slides were evaluated by a pathologist to confirm staining specificity. The optimal working concentration for LS-A6374 was determined to be 16-24 ug/ml.
Uses:	IHC - Paraffin (16 - 24 µg/ml), ELISA (Optimal dilution to be determined by the researcher)
Size:	50 µg
Concentration:	1 mg/ml

Immunohistochemistry Image:



Anti-5HT1E Receptor antibody LS-A6374 IHC of human testis. Immunohistochemistry of formalin-fixed, paraffin-embedded tissue after heat-induced antigen retrieval.

Requested From:

Japan

Laboratory Reagent For In Vitro Research Use Only

Not for resale without prior written consent from LifeSpan BioSciences, Inc.

Created on 9/23/2014

© 2014 LifeSpan BioSciences