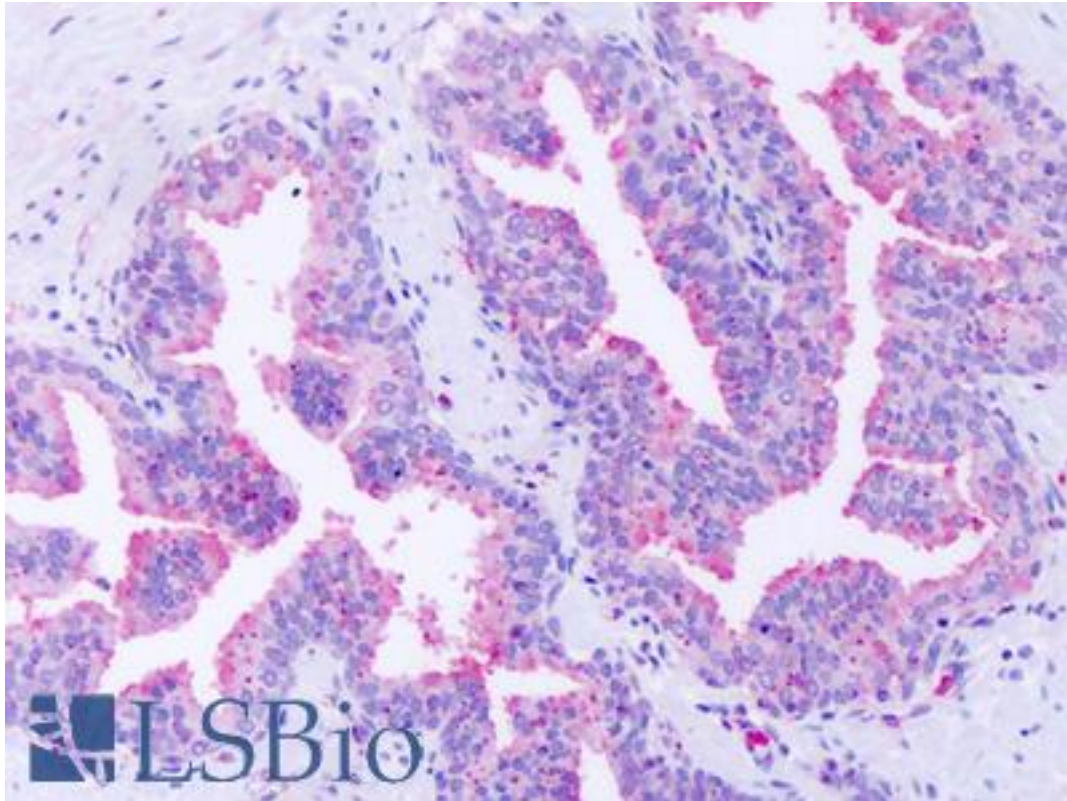


GPR63 Rabbit anti-Human Polyclonal (Extracellular Domain) Antibody - LS-A6357 - LSBio

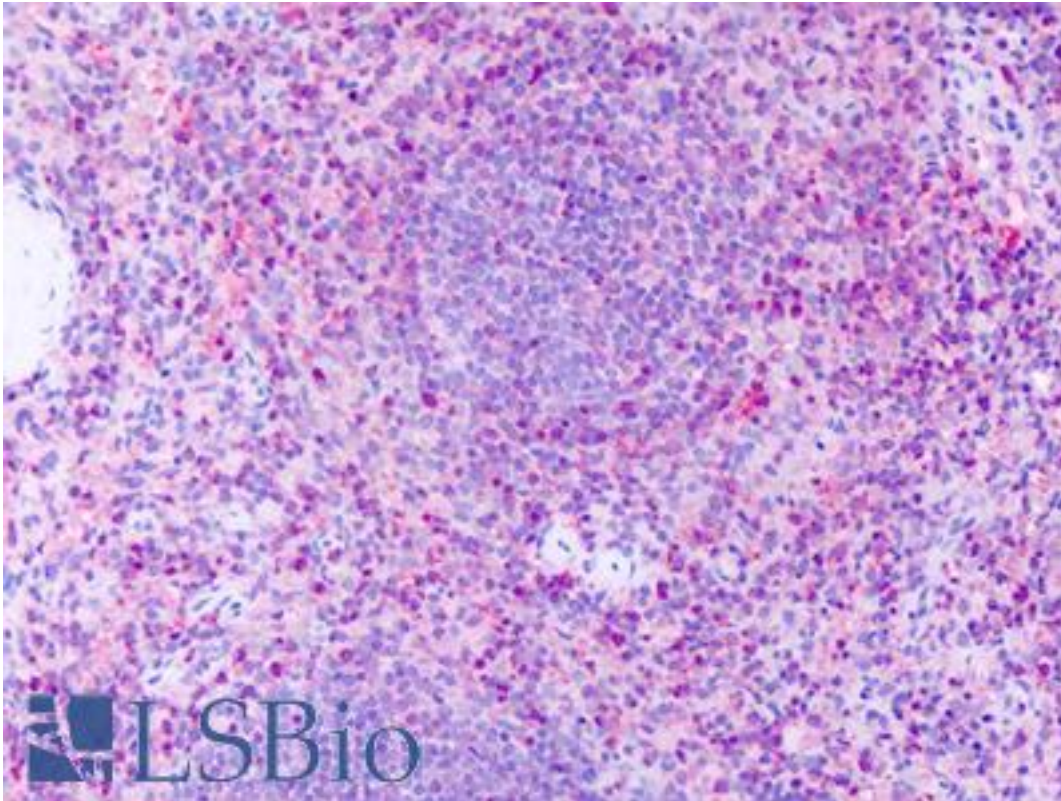
CatalogID:	LS-A6357
Target:	G protein-coupled receptor 63 (GPR63)
Synonyms:	GPR63 Antibody, PSP24(beta) Antibody, PSP24-2 Antibody, PSP24-beta Antibody, PSP24B Antibody, G protein-coupled receptor 63 Antibody
Family / Subfamily:	GPCR / Lysophospholipid/Lysosphingolipid
Host	GPR63 antibody was produced in Rabbit
Clonality:	Polyclonal
Immunogen Species:	GPR63 antibody was raised against Human
Antigen Type:	Synthetic peptide
Immunogen:	GPR63 antibody was raised against synthetic 15 amino acid peptide from 3rd extracellular domain of human GPR63. Percent identity with other species by BLAST analysis: Human, Gorilla, Gibbon, Monkey, Mouse, Rat, Hamster, Bovine, Bat, Pig (100%); Marmoset, Dog (93%); Elephant, Panda, Horse (87%); Rabbit, Opossum, Turkey, Chicken (80%).
Specificity:	Human GPR63. BLAST analysis of the peptide immunogen showed no homology with other human proteins.
Epitope:	Extracellular Domain
Reactivity:	Human, Gorilla, Gibbon, Mouse, Rat, Bat, Bovine, Hamster, Pig
Predicted Reactivity:	Monkey, Dog
Purification:	Immunoaffinity purified
Presentation:	PBS, 0.1% sodium azide.
Recommended Storage:	Long term: -70°C; Short term: +4°C
Uses:	IHC - Paraffin (19 µg/ml) (Optimal dilution to be determined by the researcher)
Size:	50 µg
Concentration:	1 mg/ml

Immunohistochemistry Image:



Anti-GPR63 antibody IHC of human prostate. Immunohistochemistry of formalin-fixed, paraffin-embedded tissue after heat-induced antigen retrieval. Antibody LS-A6357 dilution 19 ug/ml.

Immunohistochemistry Image:



Anti-GPR63 antibody IHC of human spleen. Immunohistochemistry of formalin-fixed, paraffin-embedded tissue after heat-induced antigen retrieval. Antibody LS-A6357 dilution 19 ug/ml.

Requested From:

Japan

Laboratory Reagent For In Vitro Research Use Only

Not for resale without prior written consent from LifeSpan BioSciences, Inc.

Created on 9/23/2014

© 2014 LifeSpan BioSciences