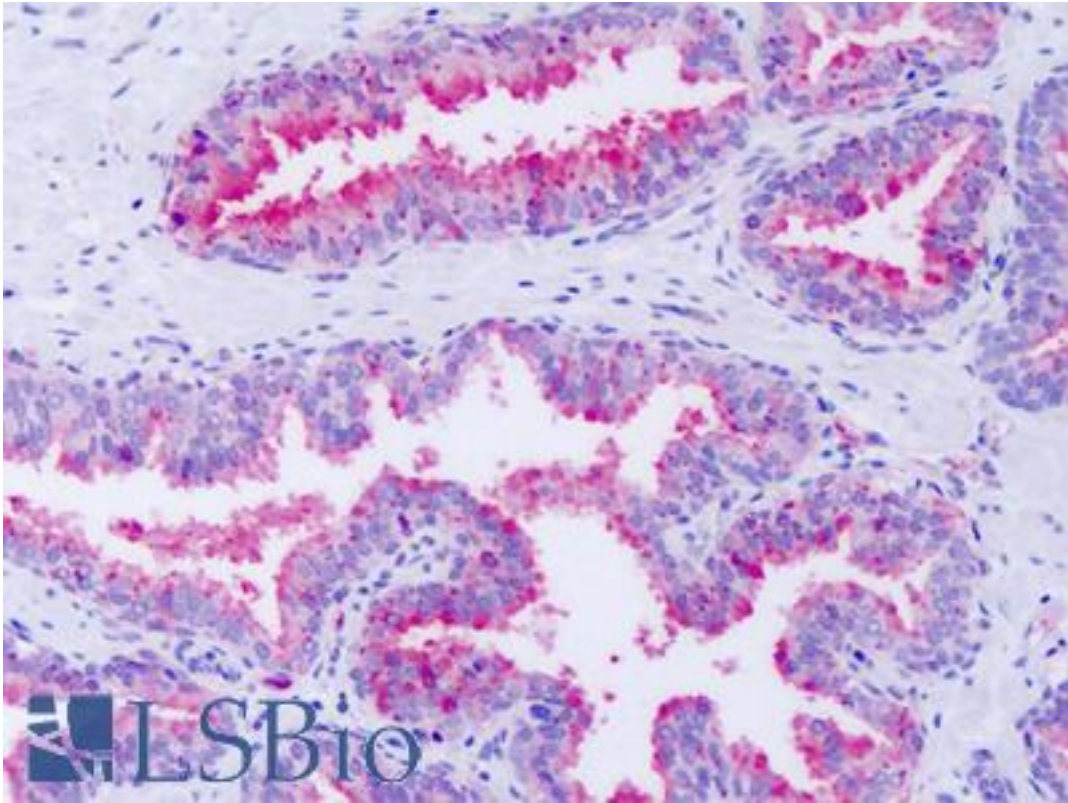


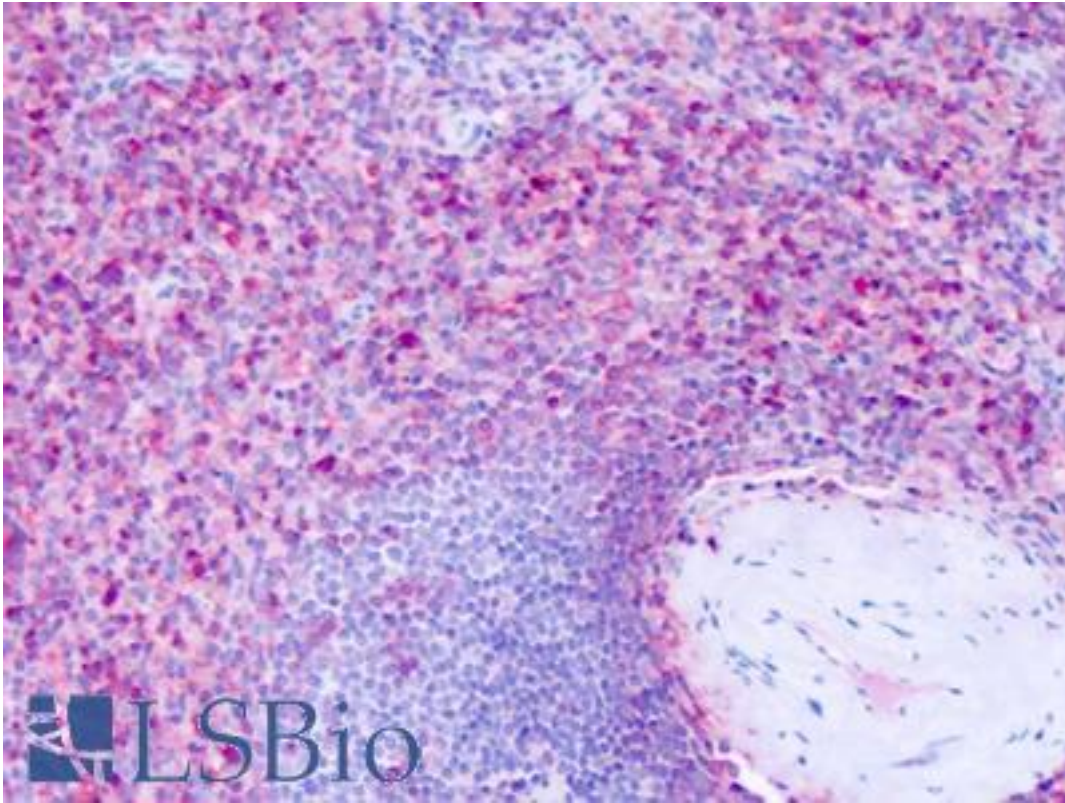
GPR63 Rabbit anti-Human Polyclonal (Cytoplasmic Domain) Antibody - LS-A6352 - LSBio	
<b>CatalogID:</b>	LS-A6352
<b>Target:</b>	G protein-coupled receptor 63 (GPR63)
<b>Synonyms:</b>	GPR63 Antibody, PSP24(beta) Antibody, PSP24-2 Antibody, PSP24-beta Antibody, PSP24B Antibody, G protein-coupled receptor 63 Antibody
<b>Family / Subfamily:</b>	GPCR / Lysophospholipid/Lyso sphingolipid
<b>Host</b>	GPR63 antibody was produced in Rabbit
<b>Clonality:</b>	Polyclonal
<b>Immunogen Species:</b>	GPR63 antibody was raised against Human
<b>Antigen Type:</b>	Synthetic peptide
<b>Immunogen:</b>	GPR63 antibody was raised against synthetic 14 amino acid peptide from 1st cytoplasmic domain of human GPR63. Percent identity with other species by BLAST analysis: Human, Gorilla, Gibbon, Monkey, Marmoset, Mouse, Rat, Elephant, Panda, Bovine, Dog, Bat, Horse, Rabbit, Pig, Opossum, Turkey, Chicken, Xenopus (100%); Lizard (93%); Stickleback, Pufferfish, Zebrafish (86%).
<b>Specificity:</b>	Human GPR63. BLAST analysis of the peptide immunogen showed no homology with other human proteins, except GPR45 (71%).
<b>Epitope:</b>	Cytoplasmic Domain
<b>Reactivity:</b>	Human, Gorilla, Gibbon, Monkey, Mouse, Rat, Bat, Bovine, Dog, Horse, Pig, Rabbit, Chicken, Xenopus
<b>Purification:</b>	Immunoaffinity purified
<b>Presentation:</b>	PBS, 0.1% sodium azide.
<b>Recommended Storage:</b>	Long term: -70°C; Short term: +4°C
<b>Uses:</b>	IHC - Paraffin (13 µg/ml) (Optimal dilution to be determined by the researcher)
<b>Uses Not Recommended:</b>	ICC, Immunofluorescence, Western blot, Immunoprecipitation, Flow Cytometry
<b>Size:</b>	50 µg
<b>Concentration:</b>	1 mg/ml

**Immunohistochemistry Image:**



Anti-GPR63 antibody IHC of human prostate. Immunohistochemistry of formalin-fixed, paraffin-embedded tissue after heat-induced antigen retrieval. Antibody LS-A6352 dilution 13 ug/ml.

**Immunohistochemistry Image:**



Anti-GPR63 antibody IHC of human spleen. Immunohistochemistry of formalin-fixed, paraffin-embedded tissue after heat-induced antigen retrieval. Antibody LS-A6352 dilution 13 ug/ml.

**Requested From:**

Japan

Laboratory Reagent For In Vitro Research Use Only

Not for resale without prior written consent from LifeSpan BioSciences, Inc.

Created on 9/23/2014

© 2014 LifeSpan BioSciences