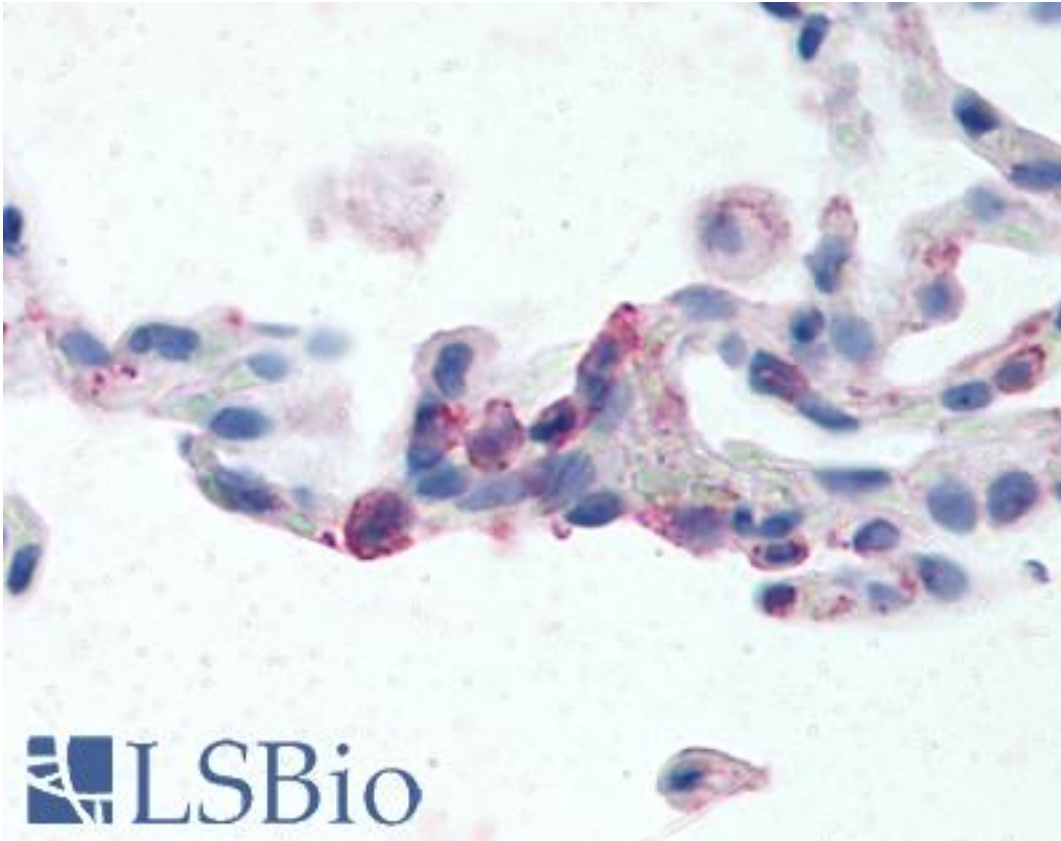


EMR2 Rabbit anti-Human Polyclonal (N-Terminus) Antibody - LS-A6306 - LSBio

<b>CatalogID:</b>	LS-A6306
<b>Target:</b>	egf-like module containing, mucin-like, hormone receptor-like 2 (EMR2)
<b>Synonyms:</b>	EMR2 Antibody, CD312 antigen Antibody, EGF-like module receptor 2 Antibody, CD312 Antibody
<b>Family / Subfamily:</b>	GPCR / Orphan-B
<b>Host</b>	EMR2 antibody was produced in Rabbit
<b>Clonality:</b>	Polyclonal
<b>Immunogen Species:</b>	EMR2 antibody was raised against Human
<b>Antigen Type:</b>	Synthetic peptide
<b>Immunogen:</b>	EMR2 antibody was raised against synthetic 19 amino acid peptide from N-terminal extracellular domain of human EMR2. Percent identity with other species by BLAST analysis: Human, Gorilla (100%); Monkey (89%).
<b>Specificity:</b>	Human EMR2. BLAST analysis of the peptide immunogen showed no homology with other human proteins.
<b>Epitope:</b>	N-Terminus
<b>Reactivity:</b>	Human, Gorilla
<b>Purification:</b>	Immunoaffinity purified
<b>Presentation:</b>	PBS, 0.1% sodium azide.
<b>Recommended Storage:</b>	Long term: -70°C; Short term: +4°C
<b>Usage Summary:</b>	Immunohistochemistry: LS-A6306 was validated for use in immunohistochemistry on a panel of 21 formalin-fixed, paraffin-embedded (FFPE) human tissues after heat induced antigen retrieval in pH 6.0 citrate buffer. After incubation with the primary antibody, slides were incubated with biotinylated secondary antibody, followed by alkaline phosphatase-streptavidin and chromogen. The stained slides were evaluated by a pathologist to confirm staining specificity. The optimal working concentration for LS-A6306 was determined to be 2-24 ug/ml.
<b>Uses:</b>	IHC - Paraffin (12 µg/ml), ELISA (Optimal dilution to be determined by the researcher)
<b>Size:</b>	50 µg
<b>Concentration:</b>	1 mg/ml

**Immunohistochemistry Image:**



Anti-EMR2 antibody LS-A6306 IHC of human lung, neutrophils. Immunohistochemistry of formalin-fixed, paraffin-embedded tissue after heat-induced antigen retrieval.

**Requested From:**

Japan

Laboratory Reagent For In Vitro Research Use Only

Not for resale without prior written consent from LifeSpan BioSciences, Inc.

Created on 9/23/2014

© 2014 LifeSpan BioSciences