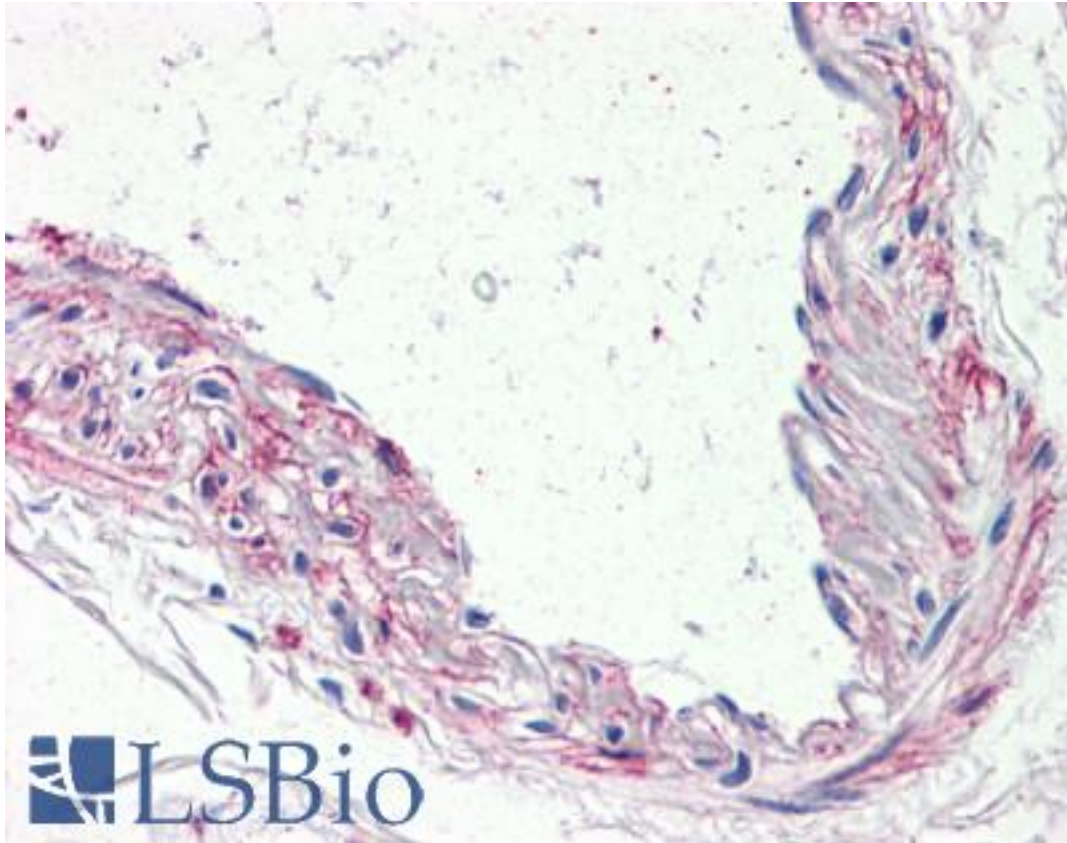


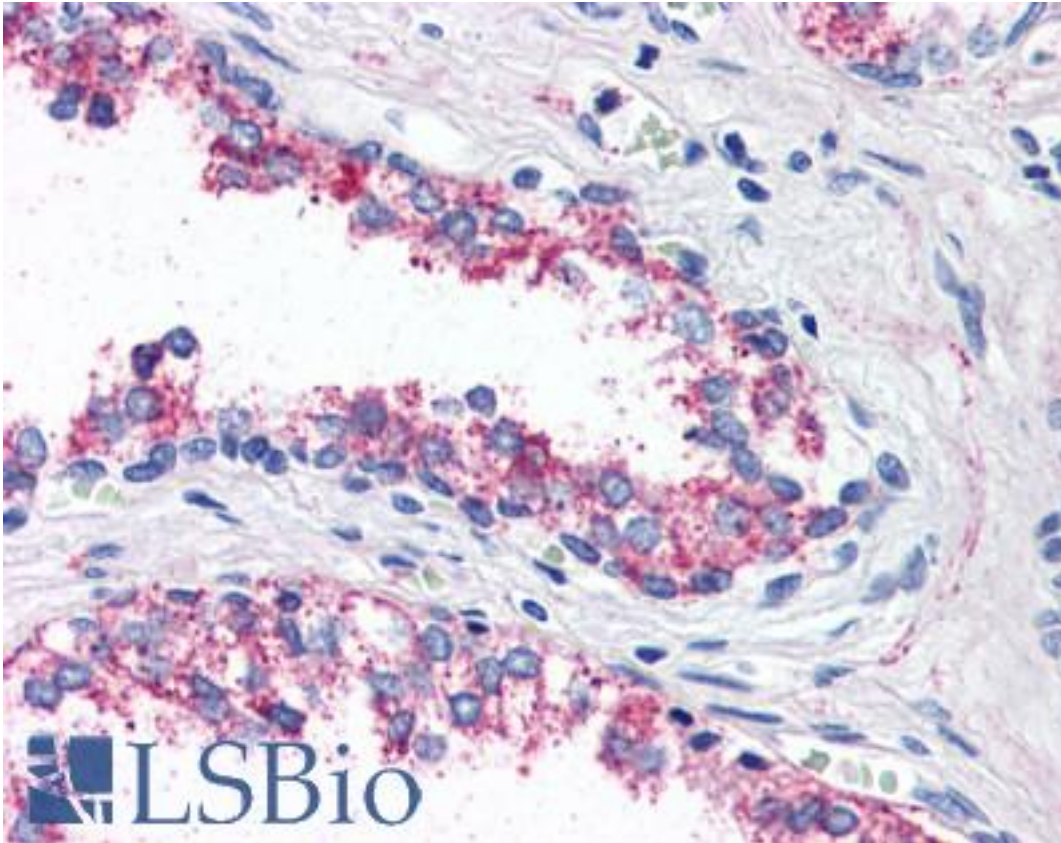
HTR1B / 5-HT1B Receptor Rabbit anti-Human Polyclonal (Internal) Antibody - LS-A586 - LSBio	
CatalogID:	LS-A586
Target:	5-hydroxytryptamine (serotonin) receptor 1B, G protein-coupled (HTR1B)
Synonyms:	HTR1B Antibody, 5-HT-1B Antibody, 5-HT-1D-beta Antibody, 5-HT1B Antibody, 5-HT1b receptor Antibody, 5-HT1DB Antibody, 5HT1B Receptor Antibody, HTR1DB Antibody, Serotonin 5-HT-1b receptor Antibody, Serotonin receptor 1B Antibody, Serotonin 1b receptor Antibody, HTR1D2 Antibody, Serotonin 1D beta receptor Antibody
Family / Subfamily:	GPCR / Serotonin
Host	HTR1B antibody was produced in Rabbit
Clonality:	Polyclonal
Immunogen Species:	HTR1B / 5-HT1B Receptor antibody was raised against Human
Antigen Type:	Synthetic peptide
Immunogen:	HTR1B / 5-HT1B Receptor antibody was raised against synthetic 17 amino acid peptide from internal region of human 5HT1B Receptor. Percent identity with other species by BLAST analysis: Human, Chimpanzee, Gorilla, Gibbon, Monkey, Marmoset (100%); Mouse, Rat, Bat, Horse, Pig (94%); Hamster, Panda, Bovine, Dog, Cat, Rabbit, Guinea pig (88%); Elephant, Opossum (82%).
Specificity:	Human 5HT1B Receptor. BLAST analysis of the peptide immunogen showed no homology with other human proteins.
Epitope:	Internal
Reactivity:	Human, Chimpanzee, Gorilla, Gibbon, Monkey
Predicted Reactivity:	Mouse, Rat, Bat, Horse, Pig
Purification:	Immunoaffinity purified
Presentation:	PBS, 0.1% sodium azide.
Recommended Storage:	Long term: -70°C; Short term: +4°C
Usage Summary:	Immunohistochemistry: LS-A586 was validated for use in immunohistochemistry on a panel of 21 formalin-fixed, paraffin-embedded (FFPE) human tissues after proteinase K antigen retrieval. After incubation with the primary antibody, slides were incubated with biotinylated secondary antibody, followed by alkaline phosphatase-streptavidin and chromogen. The stained slides were evaluated by a pathologist to confirm staining specificity. The optimal working concentration for LS-A586 was determined to be 10 µg/ml.
Uses:	IHC - Paraffin (10 µg/ml) (Optimal dilution to be determined by the researcher)
Size:	50 µg
Concentration:	1 mg/ml

Immunohistochemistry Image:



Anti-5HT1B Receptor antibody LS-A586 IHC of human vessel. Immunohistochemistry of formalin-fixed, paraffin-embedded tissue after heat-induced antigen retrieval.

Immunohistochemistry Image:



Anti-5HT1B Receptor antibody LS-A586 IHC of human prostate. Immunohistochemistry of formalin-fixed, paraffin-embedded tissue after heat-induced antigen retrieval.

Requested From:

Japan

Laboratory Reagent For In Vitro Research Use Only

Not for resale without prior written consent from LifeSpan BioSciences, Inc.

Created on 9/23/2014

© 2014 LifeSpan BioSciences