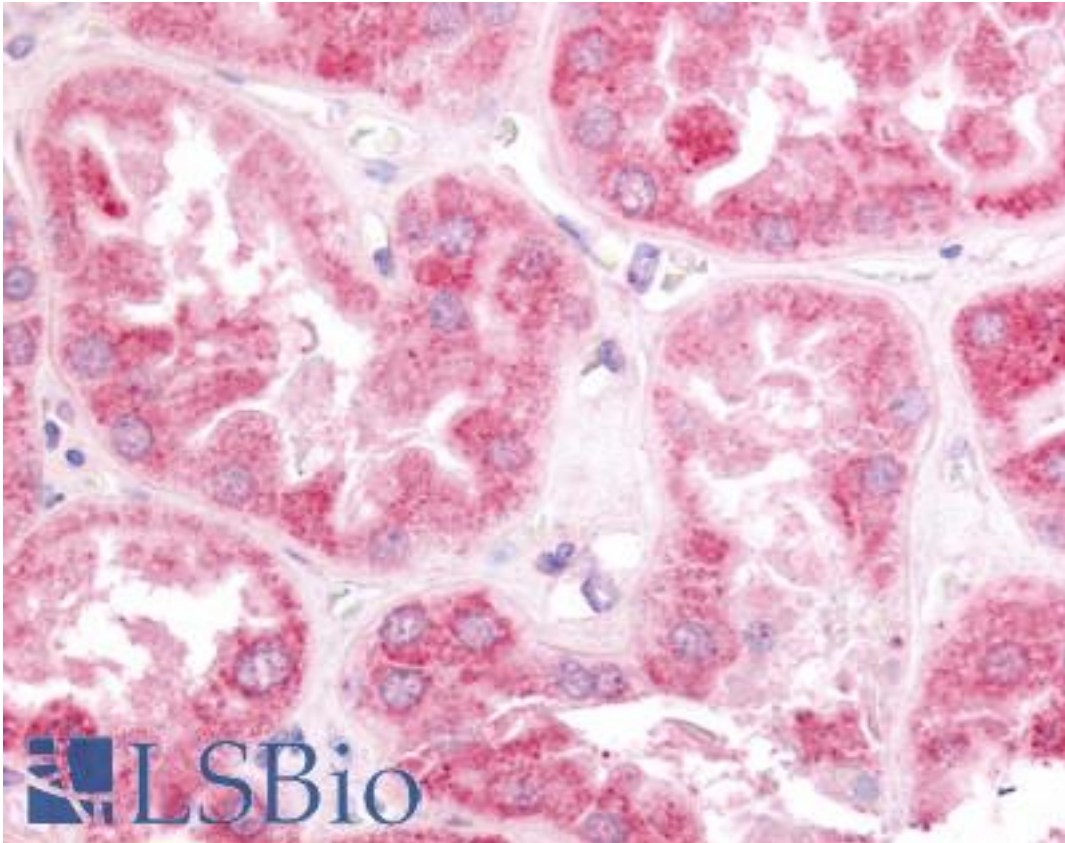


ESRRG / ERR Gamma Rabbit anti-Human Polyclonal (N-Terminus) Antibody - LS-A5841 - LSBio	
CatalogID:	LS-A5841
Target:	estrogen-related receptor gamma (ESRRG)
Synonyms:	ESRRG Antibody, ERR Gamma Antibody, ERR gamma-2 Antibody, ERR3 Antibody, Err-gamma Antibody, NR3B3 Antibody, ERRG2 Antibody, ERRgamma Antibody, KIAA0832 Antibody
Family / Subfamily:	NHR / NR3 Steroid receptor
Host	ESRRG antibody was produced in Rabbit
Clonality:	Polyclonal
Immunogen Species:	ESRRG / ERR Gamma antibody was raised against Human
Antigen Type:	Synthetic peptide
Immunogen:	ESRRG / ERR Gamma antibody was raised against synthetic 15 amino acid peptide from N-terminus of human ESRRG / ERR3. Percent identity with other species by BLAST analysis: Human, Gorilla, Orangutan, Gibbon, Monkey, Marmoset, Mouse, Rat, Bovine, Dog, Bat, Hamster, Elephant, Panda, Horse, Rabbit (100%); Opossum, Turkey, Chicken, Platypus, Lizard, Xenopus (87%).
Specificity:	Human ESRRG / ERR3. BLAST analysis of the peptide immunogen showed no homology with other human proteins.
Epitope:	N-Terminus
Reactivity:	Human, Gorilla, Orangutan, Gibbon, Monkey, Mouse, Rat, Bat, Bovine, Dog, Hamster, Horse, Rabbit
Purification:	Immunoaffinity purified
Presentation:	PBS, 0.1% sodium azide.
Recommended Storage:	Long term: -70°C; Short term: +4°C
Usage Summary:	Immunohistochemistry: LS-A5841 was validated for use in immunohistochemistry on a panel of 21 formalin-fixed, paraffin-embedded (FFPE) human tissues after heat induced antigen retrieval in pH 6.0 citrate buffer. After incubation with the primary antibody, slides were incubated with biotinylated secondary antibody, followed by alkaline phosphatase-streptavidin and chromogen. The stained slides were evaluated by a pathologist to confirm staining specificity. The optimal working concentration for LS-A5841 was determined to be 10 ug/ml.
Uses:	IHC - Paraffin (10 µg/ml), ELISA (Optimal dilution to be determined by the researcher)
Size:	50 µg
Concentration:	1 mg/ml

Immunohistochemistry Image:



Anti-ESRRG / ERR3 antibody LS-A5841 IHC of human kidney. Immunohistochemistry of formalin-fixed, paraffin-embedded tissue after heat-induced antigen retrieval.

Requested From:

Japan

Laboratory Reagent For In Vitro Research Use Only

Not for resale without prior written consent from LifeSpan BioSciences, Inc.

Created on 9/23/2014

© 2014 LifeSpan BioSciences