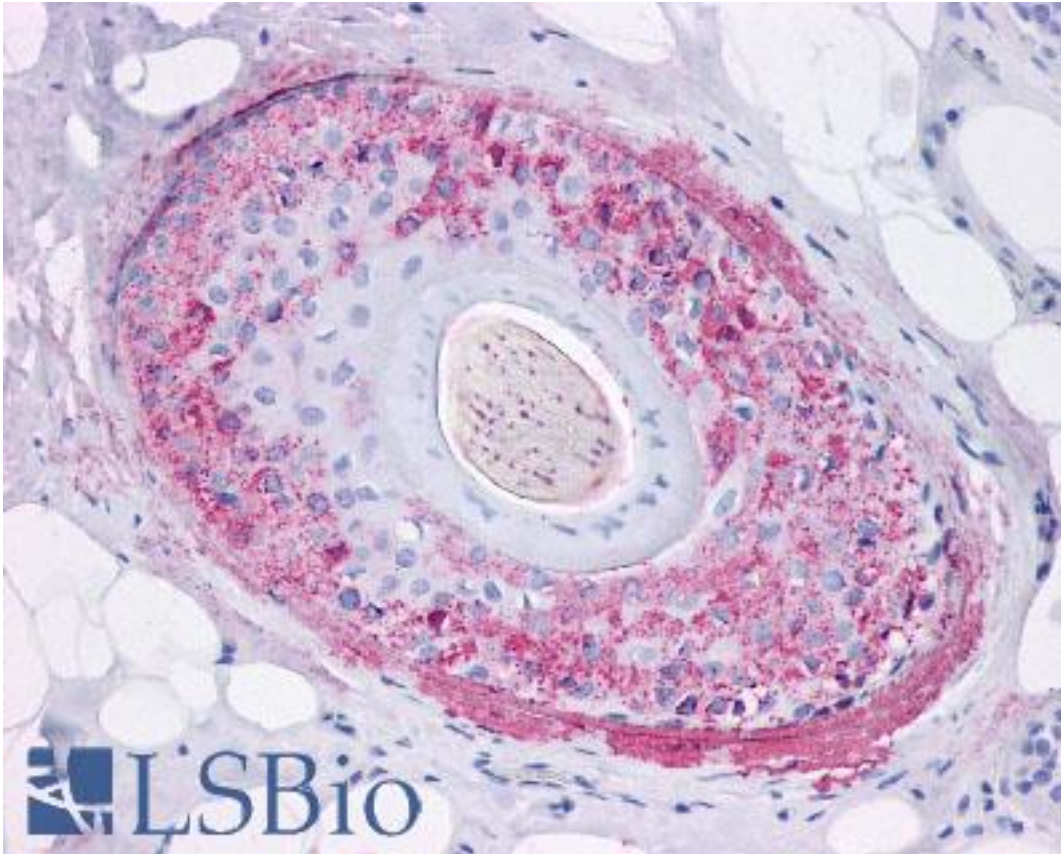


GHSR / Ghrelin Receptor Rabbit anti-Human Polyclonal (Internal) Antibody - LS-A582 - LSBio	
CatalogID:	LS-A582
Target:	growth hormone secretagogue receptor (GHSR)
Synonyms:	GHSR Antibody, GHS receptor Antibody, GH secretagogue receptor Antibody, GHRP Antibody, GHS-R Antibody, GH-releasing peptide receptor Antibody, Ghrelin receptor Antibody, Ghrp receptor Antibody
Family / Subfamily:	GPCR / Releasing hormone
Host	GHSR antibody was produced in Rabbit
Clonality:	Polyclonal
Immunogen Species:	GHSR / Ghrelin Receptor antibody was raised against Human
Antigen Type:	Synthetic peptide
Immunogen:	GHSR / Ghrelin Receptor antibody was raised against synthetic 16 amino acid peptide from internal region of human Ghrelin Receptor. Percent identity with other species by BLAST analysis: Human, Gorilla, Gibbon, Baboon, Monkey, Marmoset (100%); Mouse, Rat, Ferret, Hamster, Elephant, Panda, Bovine, Bat, Horse, Rabbit (94%); Dog, Pig, Opossum, Guinea pig, Xenopus, Zebrafish (88%); Turkey, Chicken, Lizard (81%).
Specificity:	Human Ghrelin Receptor. BLAST analysis of the peptide immunogen showed no homology with other human proteins.
Epitope:	Internal
Reactivity:	Human, Gorilla, Gibbon, Monkey
Predicted Reactivity:	Mouse, Rat, Bat, Bovine, Hamster, Horse, Rabbit
Purification:	Immunoaffinity purified
Presentation:	PBS, 0.1% sodium azide.
Recommended Storage:	Long term: -70°C; Short term: +4°C
Uses:	IHC - Paraffin (1 - 3 µg/ml) (Optimal dilution to be determined by the researcher)
Size:	50 µg
Concentration:	1 mg/ml

Immunohistochemistry Image:



Anti-Ghrelin Receptor antibody LS-A582 IHC of human skin, hair follicle.
Immunohistochemistry of formalin-fixed, paraffin-embedded tissue after heat-induced antigen retrieval.

Requested From:

Japan

Laboratory Reagent For In Vitro Research Use Only

Not for resale without prior written consent from LifeSpan BioSciences, Inc.

Created on 9/23/2014

© 2014 LifeSpan BioSciences